

Dave Steakley, Producing Artistic Director | Elisabeth Challener, Managing Director

PRODUCTION OF
DISNEY'S

BEAUTY AND THE BEAST

MUSIC BY ALAN MENKEN

LYRICS BY HOWARD ASHMAN AND TIM RICE

BOOK BY LINDA WOOLVERTON

ORIGINALLY DIRECTED BY ROBERT JESS ROTH

ORIGINALLY PRODUCED BY DISNEY THEATRICAL PRODUCTIONS

DIRECTION AND MUSICAL STAGING BY ABE REYBOLD†

MUSICAL DIRECTION BY ALLEN ROBERTSON

Choreographer	SARA BURKE
Scenic Designer.....	COURT WATSON**
Scenic Design Assistant.....	BRADLEY WEHRLE
Costume Designer	SUSAN BRANCH TOWNE**
Costume Design Assistant	ALEX CANDELAS
Hair and Makeup Designer	SERRET JENSEN
Lighting Designer.....	MICHELLE HABECK**
Sound Designer	CRAIG BROCK
Properties Designer.....	SCOTT GROH
Fight Choreographer	TOBY MINOR
Dialect Consultant	AMANDA COOLEY DAVIS
Stage Manager	CATHERINE ANNE TUCKER*
Assistant Stage Manager	MEGAN KATHLEEN SMITH*
Assistant Stage Manager	DAVVI SOLOMON
Takeover Stage Manager	BRYAN BRADFORD
Dance Captain	JENNIFER BLAKENEY YOUNG*

Costumes provided by The Theatre Company, Upland, CA.

Beast wigs provided by Matthew Reeves and Beast prosthetics by Ryan Pawlak

*Member of Actors' Equity Association, the Union of Professional Actors and Stage Managers in the United States

** Member of IATSE 829.

† Stage Directors and Choreographers Society

JULY 11 – SEPTEMBER 2, 2018 | TOPFER AT ZACH THEATRE

There will be one two minute intermission for this production.
Drinks are welcome in the theatre.

Presenting Sponsor

Presenting Sponsor



Leading Sponsor

Executive Producers Plus

Executive Producers

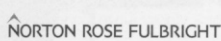


Maria and Eric Groten
Carl and Claire Stuart

Anna, Cindy, and John Greenwood
Carla and Jack McDonald
Michelle and Eric Natinsky

Supporting Sponsor

Supporting Sponsor



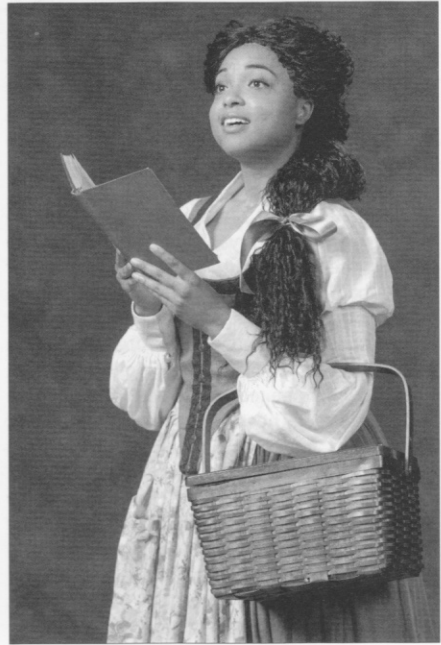
DISNEY'S BEAUTY AND THE BEAST
is presented by special arrangement with Musical Theatre International (MTI).
All authorized performance materials are provided by MTI.
www.mtishows.com

Disney's *Beauty and the Beast* Director's Notes

Welcome to the "Tale as old as time..." This lyric, which begins the memorable title song from Disney's *Beauty and the Beast* captures the sweetness and natural order of falling in love and also reminds us just how long this particular fable has been around. Origins of this universal story go back as far as second century AD to Cupid and Psyche and as shaped by the collective imaginations at Walt Disney Studios, *Beauty and the Beast* continues to evolve into yet another decade.

In the late 1980's, Lyricist Howard Ashman and composer Alan Menken gained Disney's favor after the movie of their Off-Broadway success, *Little Shop of Horrors*, was released. Both had not had a new hit in awhile and Disney provided the vehicle, *The Little Mermaid*, which reinvigorated the animated musical and paved the way for their next project, *Beauty and the Beast*. The unsung hero and least known collaborator was book writer, Linda Woolverton, who re-imagined the plot and became the first woman to write an animated feature for Disney. Her "Belle" was intelligent, strong, and not waiting for "someday her Prince to come". The slow shift in approach to the "Disney Princess" began with her.

In the early 1990's before Disney became a common name on Broadway, *Beauty and the Beast* was the first title in the current series of animated and live action movies adapted into stage musicals. For Broadway, the original writing team along with lyricist Tim Rice (Howard Ashman's life was tragically cut short by AIDS in 1991) adapted and expanded the musical. Over the last 27 years, the stage adaptation has been translated and performed all over the world and more recently was given a re-imagined live action treatment by Disney for yet another generation of fans.



Briana Brooks. Photo: KirkTuck.com

Fairy tales and fables are our modern myths that ideally teach and help us to reflect on our current time. What is it about this particular "Tale as old as time" that continues to manifest in our popular culture?" I believe the real magic in this tale is empathy, compassion, courage, and kindness helping its characters to maintain their humanity. The lessons, delivered with humor and love, are many – and a good story about transformation, reminds us just how possible change can be.

Abe Reynolds

Disney's *Beauty and the Beast* Musical Numbers

Act One

Overture	
Prologue (The Enchantress)	
"Belle"	Belle, Gaston, Lefou, Silly Girls, Townspeople
"No Matter What"	Maurice, Belle
"No Matter What" (Reprise)/Wolf Chase	Maurice
"Me" *	Gaston, Belle
"Belle" (Reprise)	Belle
"Home" *	Belle
"Home" * (Reprise)	Mrs. Potts
"Gaston"	Lefou, Gaston, Silly Girls, Tavern Patrons
"Gaston" (Reprise)	Gaston, Lefou
"How Long Must This Go On?" *	Beast
"Be Our Guest"	Lumiere, Mrs. Potts, Cogsworth, Wardrobe, Chip, Babette, Enchanted Objects
"If I Can't Love Her"	Beast

Act Two

Entr'acte/Wolf Chase	
"Something There"	Belle, Beast, Lumiere, Mrs. Potts, Cogsworth
"Human Again"	Lumiere, Wardrobe, Cogsworth, Mrs. Potts, Babette, Chip, Enchanted Objects
"Maison des Lunes"	Gaston, Lefou, Monsieur D'Arque
"Beauty and the Beast"	Mrs. Potts
"If I Can't Love Her" * (Reprise)	Beast
"The Mob Song"	Gaston, Lefou, Monsieur D'Arque, Townspeople
"Transformation" *	Beast, Belle
"Beauty and the Beast" (Reprise)	The Company

*Music by Alan Menken and lyrics by Tim Rice. All other lyrics by Howard Ashman and music by Alan Menken.



Z-LOUNGE

Live, pre-show entertainment
Drink specials

The Topfer lobby bar offers a range of beverages, sweets, and gourmet hors d'oeuvres.

The bar is open 90 minutes before, and one hour after showtime.

ENJOY!

Disney's *Beauty and the Beast* Cast

Belle	BRIANA BROOKS*
Beast	ALEXANDER MENDOZA*
Gaston	MATTHEW REDDEN*
Lumiere	MARTIN BURKE*
Cogsworth	JOHN CHRISTOPHER
Mrs. Potts	MEREDITH MCCALL
Babette	JENNIFER BLAKENEY YOUNG*
Madame de la Grande Bouche	JUNE JULIAN
Maurice	MICHAEL FERSTENFELD
Lefou	KEVIN PELLICONE
Chip #1	WILKES GOODNER
Chip #2	LUCCA OSTROVICH
Monsieur D'Arque	ANTHONY VINCENT TOUDJAROV*
Silly Girls	SHANNON CONBOY, GRACE MUAWAD, KHALI SYKES
The Enchantress	VICTORIA BROWN
Bookseller	LESLIE HETHCOX
Young Prince	ETHAN ROGERS

Ensemble

CHRIS BARFIELD, VICTORIA BROWN, MEGAN CHIZEK, SHANNON CONBOY, LESLIE HETHCOX, JUNE JULIAN, CAMRYN LAMONTAGNE, GRACE MUAWAD, ETHAN ROGERS, OWEN SCALES, TY SHAMAR, KHALI SYKES, ANTHONY VINCENT TOUDJAROV*, JENNIFER BLAKENEY YOUNG*

Swings

FRANCENE BAYOLA, CAMRYN LAMONTAGNE, JONATHAN MACEDO, OWEN SCALES

Understudies

FRANCENE BAYOLA (Belle u/s), CHRIS BARFIELD (Cogsworth u/s),
SHANNON CONBOY (Mrs. Potts/Madame la Grande Bouche u/s),
LESLIE HETHCOX (Lumiere, Maurice u/s), ETHAN ROGERS (Beast, Gaston u/s),
OWEN SCALES (Monsieur D'Arque u/s), KHALI SYKES (Babette u/s),
ANTHONY VINCENT TOUDJAROV* (Lefou u/s)
CAMRYN LAMONTAGNE (Silly Girl u/s)

*Member of Actors' Equity Association, the Union of Professional Actors and Stage Managers in the United States



*Actors' Equity Association, founded in 1913, represents more than 49,000 Actors and Stage Managers in the Understudy Equity negotiates wages and working conditions, providing a wide range of benefits, including health and pension plans. Equity seeks to foster the art of live theatre as an essential component of our society. actorsequity.org



The videotaping or other video or audio recording of this production and the taking of photographs, with or without flash, or by camera phone, is strictly prohibited. Please turn off all electronic devices – such as cell phones, pagers, etc. – and refrain from texting and/or tweeting during the performance.

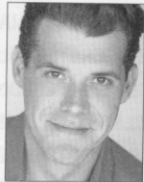
Disney's Beauty and the Beast Cast Members



Briana Brooks *



Alexander Mendoza *



Matthew Redden *



Martin Burke *



John Christopher



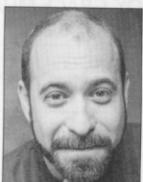
Meredith McCall



Jennifer Blakeney Young *



June Julian



Michael Ferstenfeld



Kevin Pellicone



Wilkes Goodner



Lucca Ostrovich



Victoria Brown



Anthony Vincent Toudjarov *



Shannon Conboy



Grace Muawad



Khali Sykes



Leslie Hethcox



Ethan Rogers



Chris Barfield



Megan Chizek



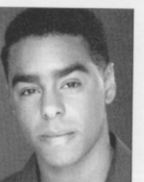
Ty Shamar



Tyler Jones



Camryn Lamontagne



Owen Scales



Francene Bayola



Johnathan Macedo

*Member of Actors' Equity Association, the Union of Professional Actors and Stage Managers in the United States.

Disney's Beauty and the Beast Cast

BRIANA BROOKS (Belle) – ZACH: Debut. Regional: *The Color Purple* (Nettie) at Art Center of Coastal Carolina. Additional Theatre Credits: *Spring Awakening* (Martha); *Godspell* (Briana); *Into The Woods* (The Bakers Wife); *Cabaret* (Sally Bowles); *Hair* (Tribe). *Company* (Kathy), *The Shape of Things* (Evelyn), and *Rent* (Joanne) at Loyola Marymount University.

ALEXANDER MENDOZA (Beast) – ZACH: Debut. NATIONAL TOURS: First National Tour of *Sister Act* and the North American Tour of *Mamma Mia!* REGIONAL: *Disney's Beauty and the Beast* (The Alabama Shakespeare Festival and 3D Theatricals), *Next to Normal* and *Spring Awakening* (McCoy Rigby Ent./La Mirada for the Performing Arts), *Disney's The Little Mermaid* (Performance Riverside), *Shrek the Musical*, and *My Fair Lady* (Peach State Summer Theater). INTERNATIONAL: *Mamma Mia!* (Royal Caribbean Cruise Line). Mendoza would like to thank the cast and creatives for giving him the opportunity to be part of this company and tell this beautiful story, his family, Ashley and Mark/KMR, and most importantly God. Joshua 1:9 This is for you Nana, I miss you everyday. Instagram: @alexander.mendoza1

MATTHEW REDDEN (Gaston) – ZACH: *Disney's Mary Poppins*; *Evita*; *The Who's Tommy*; *In the Next Room, or the Vibrator Play*; *White Christmas*, *Xanadu*, *Standing on Ceremony: The Gay Marriage Plays*, and *The Drowsy Chaperone*. REGIONAL: *The Queen of Spades and Chorus!* at Houston Grand Opera; *Camelot* at Masquerade Theatre; *Cyrano de Bergerac*, *Othello*, and *A Christmas Carol* at Alley Theatre; *Design for Living* at Main Street Theatre; *The Secret Garden* at Bayou City Musicals; Broadway Theatre Project 2004, directed by Ann Reinking. INTERNATIONAL: Karl May Festival in Germany. ADDITIONAL CREDITS: B.F.A. in Musical Theatre from Sam Houston State University.

MARTIN BURKE (Lumiere) – ZACH: *One Man, Two Guvnors*; *Mothers and Sons*; *Peter and the Starcatcher*; *This Wonderful Life* (2013-2014); *Harvey*; *The Santaland Diaries* (1998-2003, 2006-2007, 2009-2012, 2015-2016); *Fully Committed* (2003 and 2012); *The Laramie Project* (2002 and 2012); *The Laramie Project: 10 Years Later*; *If You Give a Mouse a Cookie*; *Standing on Ceremony: The Gay Marriage Plays*; *The Drowsy Chaperone*; *Take Me Out*; *Circumference of a Squirrel*, Shakespeare's *Romeo and Juliet*; *The Mystery of Irma Vep*; *Angels in America: Millennium Approaches*; *Angels in America: Perestroika*. AUSTIN SHAKESPEARE: *Design for*

Living. IMAGINE THAT PRODUCTIONS: *House of Several Stories*, *A Writer's Vision(s)* and *Down the Drain*. REGIONAL THEATRE: *Fully Committed*, *The Drowsy Chaperone*, and *The Odd Couple* at Lyric Theatre of Oklahoma, *Greater Tuna* with Joe Sears produced by Charles Dugan Presents. AWARDS: Austin Chronicle's "Best of" 2010, 2013, and 2015 "Best Actor" Award; Austin Critics' Table Award "Acting in a Leading Role" for *The Drowsy Chaperone*, B. Iden Payne Award "Outstanding Ensemble" for *The Drowsy Chaperone*, *The Laramie Project*. OTHER: B.F.A. in Acting from The University of Texas in Austin.

JOHN CHRISTOPHER (Cogsworth) – Originally from Austin, John moved to Los Angeles and studied theatre and voice at The Los Angeles Theatre Academy. While there he performed the role of Wendell Smith in *National Pastime*, George Armstrong in *Intimate Apparel*, and Walter Lee Younger in *A Raisin in the Sun*. After graduating from the conservatory he performed the roles of Al Fayoumy in *The Last Days of Judas Iscariot* and Balthazar in *Our Lady of 121st* at The Odyssey Theatre in Los Angeles. Also he sang with the SAN Luis Obispo Opera as The Bartender/Chorus in *SHOWBOAT*. Since moving back to Austin he performed the role of Balthazar in *A Comedy of Errors* with Austin Shakespeare and Rev. Thomas B. Tharpe in *Rosetta the Musical*. Most recently he played the role of Ogun in *The Brothers Size* and Achilles in Rude Mech's *Fixing Troilus and Cressida* for which he won the Austin Critic's Circle Performance of the Year.

MEREDITH MCCALL (Mrs. Potts) – ZACH: *The Curious Incident of the Dog in the Night-Time*; *The Great Society*; *The Santaland Diaries*; *The Who's Tommy*; *A Christmas Story*; *White Christmas*; *Ragtime*; *The Laramie Project 10 Years Later*; *Next to Normal*; *Fiction*; *The Drowsy Chaperone*; *Caroline, or Change*; *365 Days/365 Plays*; *Present Laughter*; *Urinetown: The Musical*; *Cabaret*; *Side Man*; *The Pavilion*; *The Laramie Project*; *Little Shop of Horrors*; *Joué*; *Pride's Crossing*; *The Rocky Horror Show* (1999 and 2006); *Angels in America: Millennium Approaches and Perestroika*; *The Taffetas*; *Jack and Jill*; *Ruthless! The Musical*; *Rockin' Christmas Party*; *Das Barbecu*; *Born Yesterday*; *Avenue X*; *Beehive: The 60's Musical*; and *Falsettos*. REGIONAL THEATRE: *Hamlet*, *The Government Inspector*, and *The Robber Bridegroom* - Guest Artist, Mary Moody Northern Theatre; *Down the Drain* and *House of Several Stories* with Imagine That. OTHER: M.A. in Theatre from Northwestern University.

JENNIFER BLAKENEY YOUNG (Babette) – ZACH: Disney's *Mary Poppins* (Mrs. Banks), *Sophisticated Ladies*, *The Who's Tommy*, *Les Misérables* (Cosette), *Ragtime* (Evelyn Nesbit), *Xanadu* (Eurato), and *Smokey Joe's Cafe*. Regional Theatre: *Damn Yankees* (Lola); *Kiss Me, Kate* (Bianca); *Peter Pan* (Tiger Lily); *Dames at Sea*; *The Best Little Whorehouse in Texas*; *Hello, Dolly!*; *West Side Story*; *A Chorus Line* (Val); *A Christmas Carol*; and *Guys and Dolls*. Jen is the Pre-Professional Manager and oversees the Pre-Professional Company at ZACH. Choreography credits at ZACH: *Goodnight Moon*, *Frog and Toad*, and *33 Variations*. ZACH Pre-Professional Production direction and choreography: *The Best of Broadway*, *Too Darn Hot*, *Steppin' Out!*, *That's Entertainment*, *Into the Woods*, and *Find Your Light*.

JUNE JULIAN (Madam de la Grande Bouche) – ZACH: *Evita*, *The King and I*. REGIONAL: *A Little Night Music* at Alamo City Opera; *Avenue Q* at Austin Theatre Project; *Iolanthe*, *The Mikado*, and *The Pirates of Penzance* at The Gilbert & Sullivan Society of Austin. OPERA: *Rigoletto* at Austin Lyric Opera. *Madama Butterfly*, *Carmen*, *Rigoletto*, and *La traviata* at Lyric Opera San Antonio. *Abu Hassan*, *Little Women*, *Suor Angelica*, and *The Medium* at Spotlight on Opera. OTHER: Austin Chamber Music Ensemble, Texas Concert Opera Collective, Russian Speakers Society, International Institute of Vocal Arts in Chiari, Italy. B.A. in Music Theory from the University of California, Santa Cruz.

MICHAEL FERSTENFELD (Maurice) – ZACH: *In the Next Room, or the Vibrator Play*; *What Light Through Yonder Window Breaks*. REGIONAL: *Picasso* at the *Lapin Agile* and *Twelfth Night* at Present Company Theatre; *Into the Woods* and *Now Then Again* at Trinity Street Theatre; *Tragedy: A Tragedy*, *Waiting for Lefty*, and *The Altruists* at Hyde Park Theatre. Finalcon at Museum of Human Achievement. OTHER: Creator of Make Every Media Podcast.

KEVIN PELLICONE (Lefou) – ZACH: Debut. REGIONAL: Disney's *Beauty and the Beast* (LeFou) at Casa Mañana; *Esther*, *Sweet Esther* at The National Press Club; *The BFG* at Dallas Children's Theater; *The Boys Next Door* (Norman Bulansky) at Great Plains Theatre; *Children of Eden* (Abel/Ham), *A Funny Thing Happened on the Way to the Forum* (Erronius), and *Boeing-Boeing* (Bernard) at The Black Hills Playhouse; *Biloxi Blues* (Arnold Epstein) at Oklahoma CityRep. OFF-BROADWAY: *The Imbibe: A Spirited History of Drinking*. TV: *Queen of the South*. OTHER: B.F.A. in Acting from Oklahoma City University.

WILKES JACOB GOODNER (Chip #1) – ZACH: *Priscilla*, *Queen of the Desert* (Benji). OTHER: Disney's *Mary Poppins*, *Anything Goes*, *Cinderella*, *Shrek the Musical*, and *The Music Man*. In addition to acting and singing, Wilkes enjoys playing basketball, learning piano, taking family road trips, and spending time with his friends. He would like to thank his family for their love and support.

LUCCA OSTROVICH (Chip #2)- REGIONAL: *Annie Get Your Gun* (Little Jake), *Annie* (Orphan).

VICTORIA BROWN (Enchantress/Ensemble)- ZACH: Disney's *Mary Poppins*. REGIONAL: *Annie Get Your Gun*, *Spamalot*, and *Into the Woods* at Summerstock Austin. ADDITIONAL CREDITS: Victoria is a rising senior at Rider University, where she will graduate with a B.F.A. in Musical Theatre.

ANTHONY VINCENT TOUDJORAV (Monsieur D'Arque/Ensemble/LeFou u/s) – ZACH: *Priscilla*, *Queen of the Desert*; Assistant Director, *Elephant and Piggie We're in a Play*; Choreographer, *Cell Block Tango* with ZACH Pre-Professional Company. He would like to thank his family and friends for their support, coaching, encouragement, and laughter. OTHER: *Rock of Ages*, *Joseph and the Amazing Technicolored Dream Coat* at Casa Manana, *Pippin*, and Disney's *Mary Poppins* at TUTS, *A Chorus Line*, *La Cage aux Folles*, *Crazy for You*, and *Singin' in the Rain*, at Arizona Broadway Theatre.

SHANNON CONBOY (Silly Girl/Ensemble, Madame de la Grande Bouche u/s, Mrs. Potts u/s) – ZACH: Debut. REGIONAL: *Guys and Dolls* (Hot Box Girl/Havana Dancer), *Pure Country* (Ensemble), *Mame!* (Ensemble); *Grease* (Sandy), *A Christmas Carol* (Ghost of Christmas Past), and *Little Shop of Horrors* (Audrey) at Firehouse Theatre; *A Man of No Importance* (Adele) at Brick Road Theatre; *Calendar Girls* (Elaine) at Mainstage Irving Las-Colinas; *Elsie Janis and the Boys* (Lulu) at Contemporary Theatre of Dallas. OTHER: B.M. in Vocal Performance and Music Education from Southern Methodist University 2016. shannonconboy.com

GRACE MUAWAD (Silly Girl/Ensemble) – ZACH: Debut. Grace is a rising Musical Theatre major at Texas State University. CREDITS: *A Chorus Line* (Bebe), *Ragtime* (Ensemble), *Legally Blonde* (Chutney/Ensemble) and *The World According to Snoopy* (Lucy U/S). Much love to Mom, Dad, William, Anne, and her MT19 family!"

KHALI SYKES (Silly Girl/Ensemble, Babette u/s) – ZACH: *In the Heights* (Swing), *Singin' in the Rain* (Assistant to the Choreographer). OTHER: *In the Heights* (Yolanda/Choreographer), *Big Love* (Olympia), *Urinetown the Musical* (Little Sally). ADDITIONAL CREDITS: PPC Elite alumni, current B.A. Acting Major at University of Texas.

LESLIE HETHCOX (Bookseller/Carpet Ensemble, Lumiere u/s, Maurice u/s) – ZACH: *All the Way*; *The Drowsy Chaperone* (Gangster / Baker #2); Disney's *Mary Poppins*; *Peter and the Starcatcher*; *Priscilla*, *Queen of the Desert*; *Ragtime* (Stanford White); *Sophisticated Ladies* (Sophisticated Gentleman); *White Christmas* (Phil Davis u/s). REGIONAL: *Beauty and the Beast* (Lumiere), *Blood Brothers* (Sammy Johnstone), *Cabaret* (the Emcee), *Carousel* (Boatswain), *CATS* (Munkustrap), *Chicago* (Billy Flynn), *A Chorus Line* (Richie; Bobby), *Fiddler on the Roof* (the Fiddler), *Follies* (Young Buddy), *The Full Monty* (Malcolm McGregor), *The Importance of Being Earnest* (Algernon Moncrief).

ETHAN ROGERS (Young Prince, Gaston u/s, Beast u/s) – ZACH: Debut. REGIONAL: *Hair* (Tribe/Berger u/s) at the Beck Center for the Arts. Recent: *Three Penny Opera* (Jimmy) at Cleveland Opera Theatre. Ethan is a rising sophomore B.M. Music Theatre major at Baldwin Wallace Conservatory of Music and is a ZACH PPC alumnus.

CHRIS BARFIELD (Ensemble, Cogsworth u/s) – ZACH: *Singin' in the Rain*. He has been dancing since the age of 9. He has had formal training in ballet, jazz, tap, contemporary, lyrical, hip-hop and a little salsa. He has performed in numerous dance productions as well as musicals like *Seussical* and *Les Misérables*. Chris also had the chance to dance in the Jack Black film *Bernie*. He has appeared in shows such as *Smokey Joe's Café*, *42nd Street*, and Disney's *The Little Mermaid* in the Austin area.

MEGAN CHIZEK (Ensemble) – ZACH: Debut. REGIONAL: *The Wild Party* at Illumination Acts; *Broadway Bares: Strip U* at Hammerstein Ballroom; and Disney's *Mary Poppins* at Bay Ridge Chorale. TELEVISION: *The Daily Show* with Trevor Noah; *The View!*; and *Chicago* promotion video directed by Todrick Hall. OTHER: Broadway Dance Center Professional Semester and B.F.A. in Dance Performance from Oklahoma City University.

TY SHAMAR (Ensemble) – ZACH: Debut. He is a Texas native who recently graduated from UT with a B.A. in Theatre and Dance. OTHER: *Little Women*

(Ensemble), *Bye Bye Birdie* (Hugo Peabody), and *You're a Good Man, Charlie Brown* (Ensemble/Linus Cover). He would like to thank his parents and his professors for their love and support.

TYLER JONES (Monsieur D'Arque) – ZACH: *Sunday in the Park with George*; *Xanadu*; *Ragtime*; *White Christmas*; *Peter and the Starcatcher*; *A Christmas Carol*; *One Man, Two Guvnors*; and Disney's *Mary Poppins*. He is a native Austinite who has performed in many shows around town. OTHER: *Cabaret*, *Merrily We Roll Along* at Mary Moody Northen Theater. *Silence*, *Nevermore* at Doctuh Mistuh Productions, *Hairspray*, *Little Shop of Horrors*, *The Music Man* at Zilker Theatre. *The Lonesome West* at Hyde Park Theatre, *I Love You Because* at Penfold Theatre, *Freud's Last Session* at Jarrott Productions and *Shakespeare in Love* at Austin Playhouse.

CAMRYN LAMONTAGNE (Swing, Silly Girl u/s) – ZACH: Mainstage debut. *Find Your Light* (PPC 2018), *The Best of Broadway* (PPC 2017). Camryn is a two year member of ZACH's Pre-Professional Company and is thrilled to be in her first main stage show. She would like to thank her family for their constant support as well as Jen Young and Josh Weschler for their instruction and direction.

OWEN GEORGE SCALES (Swing, Monsieur D'Arque u/s) – ZACH: *A Christmas Carol* (Peter Cratchit/Ensemble). REGIONAL: *Carnival*, *The Steadfast Tin Soldier*, *Spamalot*, and *Annie Get Your Gun* with Summer Stock Austin. Owen is a Junior Performance Theatre Major at McCallum Fine Arts Academy and has performed in productions such as *Cyrano the Musical* (Christian de Neuville), and *West Side Story* (Dream Ballet Pas de Deux).

FRANCENE BAYOLA (Swing, Belle u/s) – ZACH: Debut. ZACH PPC: *Find Your Light*. Francene is a first year member of the ZACH's Pre-Professional Company and is making her way into Junior year this following year. She is excited to be involved in her first mainstage show and wants to thank her family, friends, Jen Young, and Josh Weschler, for their endless support.

JONATHAN MACEDO (Swing) – ZACH: Debut. ZACH PPC: *Find Your Light* (2018). Jonathan is a one year member of ZACH's Pre-Professional Company and is excited to be in his first main stage show. He would like to thank his family for constantly supporting him.

The Artistic Team



Abe Reybold †



Allen Robertson



Sara Burke*



Court Watson



Susan Branche Towne**



Serret Jensen



Michelle Habeck



Craig Brock



Scott Groh



Toby Minor



Amanda Cooley Davis



Catherine Anne Tucker*



Megan Kathleen Smith*



Davvi Solomon



Bryan Bradford

About the Artistic Team

ABE REYBOLD (Director) – ZACH Theatre's Associate Artistic Director has helmed many productions including *One Man, Two Guvnors*; *Sophisticated Ladies*; *James & the Giant Peach*; *The Three Little Pigs*; *The King and I*; *Vanya and Sonia and Masha and Spike* (ZACH); *Blood Brothers* and *Camelot* (The Texas Shakespeare Festival); *The 25th Annual Putnam County Spelling Bee*, *Bat Boy The Musical* and *Singin' in the Rain* (Red Mountain Theatre Company, AL); *Evita*, *No Way to Treat a Lady*, and *Jekyll & Hyde* (Broadway Rose Theatre Company, OR); Disney's *Beauty & The Beast* (Mill Mountain Theatre, VA). For The Birmingham Children's Theatre, he adapted *Sacagawea*, *Peter & the Wolf* (with the Alabama Symphony) and staged *Scrooge*, *The Snow Girl*, and *Tuxedo Junction* (NEA new work). Abe spent many years acting on Broadway, National Tours, and in Regional and stock theatres around the country.

ALLEN ROBERTSON (Musical Director) is a two-time Emmy Award®-winning music director, composer, writer, actor, and director. He has worked on hundreds of productions nationally and internationally, including 24 years of shows at ZACH. Off Broadway: Radio City Music Hall; *The Flaming Idiots*. Allen has recorded for Disney Records, and many TV and radio commercials. He is a writer/composer of 12 musicals, 60 TV episodes, 2 film scores, and a ballet. He has been recognized by the Texas Legislature, American Society of Composers, Authors and Publishers, The Texas Music Educators Association, the Academy of Television Arts and Sciences and the National Association of Parenting Publications for his contributions to the arts.

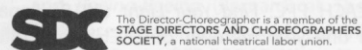
SARA BURKE (Choreographer) – ZACH: *Priscilla, Queen of the Desert* (Diva); *Peter and the Starcatcher* (Molly); *A Christmas Carol*; *Les Misérables*; *White Christmas*; *Xanadu* (Kira/Clio); *Spring Awakening* (Wendla); and *Hairspray* (Amber von Tussle). NORWEGIAN CRUISE LINE: *Legally Blonde The Musical* (Brooke/Vivienne u/s). OTHER: *Shrek The Musical* (Fiona) with Zilker Theatre Productions, *Chicago* (Roxie Hart) with Austin Playhouse, *Legally Blonde The Musical* (Serena) with Red Mountain Theatre Co.; *The Last Five Years* (Cathy) with Penfold Theatre Company.; *Sweet Charity* (Charity) with Summer Stock Austin.

COURT WATSON (Set Design) – ZACH Theatre: *Evita* and *Gospel at Colonus*. Recent credits include *The 25th Annual Putnam County Spelling Bee*, *Liberty Smith*, and *Little Shop of Horrors* at Ford's

Theatre, *Annie*, *The Sound of Music*, *Jonny spielt auf*, *Frau Luna*, and *The Nutcracker* at the Salzburg Landestheater, *Man of La Mancha* at Central City Opera, *King for a Day* and *Annie Get Your Gun* at the Glimmerglass Festival, *Tales of Hoffman* in Beijing, *Rockville* and *Hairspray* for the Munich Deutschestheater, *Jekyll & Hyde* and *West Side Story* for Theater Magdeburg, as well as *Sea Lion High*, *Azul*, and *O Wondrous Night* for Sea World, and *Roll Out the Barrel*, *London Rocks*, *Scrooge No More*, and *Monster Stomp* for Busch Gardens Williamsburg. Upcoming projects include *Spamalot* and *Hänsel & Gretel* for Salzburg and *La Bohème* at Wolf Trap Opera. His watercolors have been exhibited in New York's Leslie-Lohman Gallery and published in 100 Artists of the Male Figure. He holds an MFA from New York University. www.courtwatson.com

SUSAN BRANCH TOWNE (Costume Designer) – ZACH: 30 credits including *One Man, Two Guvnors*; *A Christmas Carol*; *Sophisticated Ladies*; *The Who's Tommy*; *One Night with Janis Joplin*; *Ragtime*; *Xanadu*; *Hairspray*; and *The Drowsy Chaperone*. ADDITIONAL CREDITS: *The Magic Flute* for Ballet Austin, The Bat Austin Lyric Opera; *She Loves Me*, *Hamlet*, *Merrily We Roll Along*, *The Secret Garden*, *Carousel* and many more at St. Edward's University where she is an Assistant Professor. Susan's more than 200 professional credits include productions at Denver Center Theatre Company, Repertory Theatre of St. Louis, Syracuse Stage, Alabama Shakespeare Festival, Pioneer Theatre Company, Utah Shakespeare Festival, New York City Opera, as well as Off-Broadway. Susan holds a B.F.A. from Carnegie-Mellon University and an M.F.A. from the Yale School of Drama, and is a 30-year member of United Scenic Artists, Local 829

SERRET JENSEN (Hair and Makeup Designer) – ZACH: *Singin' in the Rain*, *Lady Day at Emerson's Bar & Grill*, *The Great Society*, *Priscilla, Queen of the Desert*; *Mary Poppins*; *One Man, Two Guvnors*; *Mothers and Sons*; *Peter and the Starcatcher*; *A Christmas Carol*; *The King and I*; *The Who's Tommy*; *The Gospel at Colonus*; *In the Next Room, or the vibrator play*; *A Christmas Story*; *Les Misérables*. Originally from Houston, she has been the resident designer for The Alley Theatre, Divergence Vocal Theatre, body suspension group C.o.R.E., and other performance art groups and children's theatres. She has worked on productions with Houston Grand Opera, Austin Lyric Opera, Houston Ballet, Theater Under the Stars, and the Society of Performing Arts, and several national tours.



UNITED SCENIC ARTISTS LOCAL 829
A national theatrical labor union and professional association of Designers, Artists and Craftspeople.

*Member of Actors' Equity Association, the Union of Professional Actors and Stage Managers in the United States.

** Member of IATSE 829.

† Stage Directors and Choreographers Society

About the Artistic Team

MICHELLE HABECK (Lighting Designer) – ZACH: *Mary Poppins; One Man, Two Guvvorns; Sophisticated Ladies; The Gospel at Colonus; In the Next Room, or the vibrator play; Mad Beat Hip & Gone; 33 Variations; Xanadu; and Dividing the Estate.* BROADWAY: *Slide Artist, Thoroughly Modern Millie;* Associate Lighting Designer, *The Boy from Oz, King Hedley II, and Movin' Out.* OPERA: *Un Ballo In Maschera* and *The Elixir of Love* for Austin Opera; Associate Lighting Designer, Julie Taymor's *Grendel.* REGIONAL and OFF BROADWAY: Her freelance career as a lighting designer has been seen at many of the nation's leading regional theatres including Lucille Lortel Theatre, The Steppenwolf, The Goodman, and many others.

CRAIG BROCK (Sound Design) is ZACH's resident sound designer, and has worked as a recording engineer and music producer since 1989. ZACH: *Lady Day at Emerson's Bar & Grill; The Great Society; Priscilla, Queen of the Desert; Mary Poppins; One Man, Two Guvvorns; Sophisticated Ladies; Mothers and Sons; All The Way; Peter and the Starcatcher; A Christmas Carol; The King and I; The Who's Tommy; Vanya and Sonia and Masha and Spike; The Gospel at Colonus; A Christmas Story; Les Misérables; Sandra Bernhard in Concert; 33 Variations; One Night with Janis Joplin; Megan Hilty in Concert; Harvey; Tru; Ragtime; Mad Beat Hip & Gone; White Christmas; Xanadu; The Laramie Project; The Laramie Project: Ten Years Later; Next to Normal; RENT; Metamorphoses; The Drowsy Chaperone; Becky's New Car; and Porgy and Bess.*

SCOTT GROH (Set and Properties Design) is ZACH Theatre's Resident Properties Designer and created prop designs for *A Christmas Carol; A Year with Frog and Toad; The Who's Tommy; Pinocchio; The Gospel at Colonus; In the Next Room, or the vibrator play; A Christmas Story; This Wonderful Life; Les Misérables; and One Night with Janis Joplin.* NATIONAL TOURS: *Fiddler on the Roof, Blast!, All Shook Up, and Arthur Live!.* REGIONAL THEATRE: Tuacahn Amphitheatre, The Lost Colony, Colorado Shakespare Festival, SeaSide Music Theatre, La MaMa Experimental Theatre Club, Williamstown Theatre Festival, and Porthouse Theatre. scottgrohdesign.com

TOBY MINOR (Fight Choreographer) – ZACH: *Singin' in the Rain; Priscilla, Queen of the Desert; One Man, Two Guvvorns; Peter and the Starcatcher.* FILM: *The Threshing Floor, The Royal Rascal, Slim Mints, Haze.* OTHER: *Twelfth Night* with Present Theatre Company, Hallowscream at Sea World, *The Fantasticks* at AJRT, *Qualities of Starlight* and

King Lear at The Vortex Theatre, *The Girl with Time In Her Eyes* at Hidden Room Theatre. ADDITIONAL CREDITS: Stage Combat Instructor at Texas State University, Advanced Actor Combatant with the S.A.F.D., B.A. from NMSU.

AMANDA COOLEY DAVIS (Dialect Consultant) – ZACH: *Heisenberg, The Curious Incident of the Dog in the Night-Time; The Great Society; Priscilla, Queen of the Desert; Disney's Mary Poppins; One Man, Two Guvvorns.* JARROTT PRODUCTIONS: *Prodigal Son; The Herd; The Price; Freud's Last Session.* TRINITY STREET PLAYERS/AUSTIN JEWISH REPERTORY THEATRE: *Kindertransport.* CITY THEATRE: *The Importance of Being Earnest.* When not playing with accents, Amanda is an Episcopal children's educator, actor, and Mama to baby Abby. TRAINING: M.F.A. in Acting from Brooklyn College, M.A. in Theatre Arts from San Diego State University, A.B. in Theatre from Davidson College.

CATHERINE ANNE TUCKER (Stage Manager) – ZACH: *The Curious Incident of the Dog in the Night-Time, Singin' in the Rain, Million Dollar Quartet; Lady Day at Emerson's Bar & Grill; The LBJ Plays: All the Way and The Great Society; Priscilla, Queen of the Desert; Mary Poppins; Red Hot Patriot: The Kick Ass Wit of Molly Ivins; ANN; Caroline, or Change; Artistic Director Dave Steakley's version of A Christmas Carol* for the past three years; and *Peter and the Starcatcher* with Lyric's Michael Baron. NEW YORK: *Lapsburgh Layover (Ars Nova); Be A Good Little Widow (Ars Nova), Sparkling Object, I Never Sang for My Father (Keen Theatre Co.); and US (The Real Theatre Co.).* Catherine studied theatre at Southern Oregon University in Ashland, Oregon.

MEGAN KATHLEEN SMITH (Assistant Stage Manager) – ZACH: Stage Management for *Goodnight Moon, A Christmas Carol ('14 & '17), Singin' in the Rain, Million Dollar Quartet, In The Heights, JJ's Arcade, The Great Society, Charlotte's Web, Buyer & Cellar, Alice in Wonderland, Tribes, Winnie the Pooh, Cenicienta, Vanya and Sonia and Masha and Spike, The Cat in the Hat, Sciencetricks, Holiday Heroes, and HCA's The Little Mermaid.* REGIONAL: *Guys and Dolls* at TexARTS, *The Taming of the Shrew and The Invention of Love* at Austin Shakespeare, and numerous productions at Judson Theatre Company in Pinehurst, NC, The Theatre Barn in New Lebanon, NY, and Seven Angels Theatre in Waterbury, CT. Megan hold a Bachelor's Degree in Theatre from the University of Kansas. AEA.

About the Artistic Team

DAVVI SOLOMON (Assistant Stage Manager) ZACH: Stage Management for PPC *Find Your Light* 2018; *Las Aventuras de Enoughie;* PPC Spring Showcase 2017. Child Actor Coach: *Disney's Mary Poppins; Priscilla, Queen of the Desert; A Christmas Carol ('17 & '16).* REGIONAL: Child Actor Coach *The Wizard of Oz* at Zilker Theatre. OTHER: B.F.A. in Theatre and Dance from UT at Austin.

BRYAN BRADFORD (Takeover Stage Manager) – This year marks Bryan's 14-year relationship and his directing debut with ZACH. His theater career has taken the winding road through acting and stage managing and has inescapably arrived at directing and writing. After many years cutting his teeth in New York, he relocated back to Austin where he recently directed *Prodigal Son* at Trinity Street Theatre for Jarrott Productions. As a stage manager, his credits range from Broadway (*Newsies, Rock of Ages, Kinky Boots*), to Off-Broadway and beyond, as well as many productions here at ZACH including *In the Next Room, or the Vibrator Play; 33 Variations; and Crowns.* He would like to thank Dave Steakley and his ZACH family for the opportunity to direct this classic story of giving, redemption, and kindness.

ALAN MENKEN (Composer) – MUSICALS: *God Bless You, Mr. Rosewater; Little Shop of Horrors; Beauty and the Beast; A Christmas Carol; The Little Mermaid; Sister Act; Leap of Faith; Newsies; Aladdin; The Hunchback of Notre Dame; The Apprenticeship of Duddy Kravitz and A Bronx Tale.* Film work: *The Little Mermaid, Beauty and the Beast* (animated), *Newsies, Aladdin, Pocahontas, The Hunchback of Notre Dame, Hercules, Enchanted, Tangled, Sausage Party, Beauty and the Beast* (live version). Television credits: "Sesame Street," "Lincoln," "The Neighbors," "Galavant," "Tangled." Awards: 2012 Tony®, Drama Desk, 8 Oscars®, 11 Grammy® Awards, 7 Golden Globes®, London's Evening Standard, the Olivier and Outer Critics Circle.

HOWARD ASHMAN (Lyricist) – Best known as a pivotal creative mind behind the renaissance of Disney animation and his work on *The Little Mermaid, Aladdin, and Beauty and the Beast* (which is dedicated to, "Our friend, Howard Ashman, who gave a Mermaid her voice and a Beast his soul...") Ashman's first love was theater. Ashman was a founder of off off Broadway's renowned WPA Theater, where he conceived, wrote and directed *God Bless You, Mr. Rosewater*, as well as the classic musical, *Little Shop of Horrors* (both music by Alan Menken). He wrote and directed the Broadway

musical *Smile* (music by Marvin Hamlisch). Lamented as a lost treasure of the 1980's theater scene, *Smile* remains popular on High School and College campuses throughout the country.

TIM RICE (Lyricist) has worked in music, theater, and film since 1965, when he met Andrew Lloyd Webber, a fellow struggling songwriter. Rather than pursue Tim's ambitions to write rock or pop songs, they turned their attention to Andrew's obsession - musical theater. Their first collaboration, *The Likes Of Us* (Lyrics by Tim, music by Andrew), was an unsuccessful show based on the life of Dr. Barnardo, the Victorian philanthropist. Their next three works together were much more successful: *Joseph and the Amazing Technicolor Dreamcoat, Jesus Christ Superstar, and Evita.* Tim has also worked with other distinguished popular composers such as Elton John (*The Lion King, Aida*), Alan Menken (*Aladdin, King David, Beauty and the Beast*), and Bjorn Ulvaeus and Benny Andersson (*Chess*). From *Here to Eternity*, with music by newcomer Stuart Brayson, co-produced with Lee Menzies, directed by Tamara Harvey, and with book by Bill Oakes, premiered in the West End at the Shaftesbury Theatre in 2013. He formed his own cricket team in 1973 and was president of the MCC in 2002. In 2013, he wrote and presented a 52-part series for BBC Radio 2, *American Pie*, a trawl through the music and musicians of every American State.

LINDA WOOLVERTON (Playwright) Linda Woolverton's writing credits include the screenplay for the animated feature film *Beauty and the Beast* (Golden Globe winner and Academy Award Best Picture nominee); the screenplay (shared) for *Homeward Bound: The Incredible Journey*; screenplay (shared) for the animated feature film *The Lion King*; the book for the Broadway musical *Beauty and the Beast* (Tony Award nomination for Best Book of a Musical, winner 1998 Olivier Award Best New Musical); and book (shared) for Elton John and Tim Rice's Broadway musical *Aida*. Also she has written two young-adult novels, *Star-wind* and *Running before the Wind*. She holds a Bachelor's degree in Theatre Arts from California State University Long Beach and a Master's degree in Theatre from California State University Fullerton. Linda is currently involved in writing and producing film projects for Miramax and Revolution studios. She lives in Los Angeles with her husband Lee Flicker and daughter Keaton.