

**EDWARD
ALBEE'S
WHO'S
AFRAID OF
VIRGINIA
WOOLF?**

DIRECTED BY CHRISTINA J. MOORE

NOV. 11-21, 2010



**ST. EDWARD'S
UNIVERSITY**
AUSTIN

MARY MOODY NORTHEN THEATRE

THE COMPANY

Martha Babs George*
 George Ev Lunning Jr.*
 Honey Meredith Montgomery**
 Nick Kel Sanders**



SCENE

The living room of a house on the campus of a small New England college.

THERE WILL BE TWO 10-MINUTE INTERMISSIONS.

* Member, Actors' Equity Association, the union of professional actors and stage managers in the United States

** Equity Member Candidate

Mary Moody Northen Theatre is a member of the Theatre Communications Group.

ACTORS' EQUITY ASSOCIATION (AEA) was founded in 1913 as the first of the American actor unions.



**ACTORS'
EQUITY**
ASSOCIATION 1913

Equity's mission is to advance, promote and foster the art of live theatre as an essential component of our society. Today, Equity represents more than 45,000 actors, singers, dancers and stage managers working in hundreds of theatres across the United States. Equity members are dedicated to working in the theatre as a profession, upholding the highest artistic standards. Equity negotiates wages and working conditions and provides a wide range of benefits including health and pension plans for its members. Through its agreement with Equity, this theatre has committed to the fair treatment of the actors and stage managers employed in this production. AEA is a member of the AFL-CIO and is affiliated with FIA, an international organization of performing arts unions. For more information, visit www.actorsequity.org.

PRODUCTION STAFF

Assistant Technical Director Zacharie B. Hennard
 Assistant to the Director Kiara Brynne
 Assistant to the Scenic Designer Carli Werner
 Assistant to the Lighting Designer and Master Electrician Erin Fleming
 Assistant to the Make-up/Hair Designer Lisa Raymond
 Assistant Properties Designer Talieka Shears
 Vocal Coach Sheila M. Gordon
 Lead Stage Manager Johnny Joe Trillayes**
 Second Assistant Stage Manager Tyler Mount**
 Assistant Stage Managers Lora Blackwell**, Emily Donald**, Sophia Franzella**, Kendra K. Perez**
 Student Assistant to the Technical Director George Marsolek
 Properties Lead Assistant Johnny Joe Trillayes
 Properties Design and Construction Monica Azcarate, Nathan Brockett,
 Liz Newchurch, Kassandra Ortiz
 Assistant to the Master Electrician/Board Operator Christina Smith
 Assistant to the Sound Designer/Board Operator Jon Wayne Martin
 Sound Department Staff Candice Rogers
 Scene Shop Staff Cameron Allen, George Marsolek, Candice Rogers, Carli Werner
 Costume Shop Staff Kera Blay, Jordyn Campbell, Eileen Chaffer,
 Emily Donald, Aidan Liller, Meredith Montgomery, Helen Ralowicz
 Stitchers Aimee Kandl, Tanya Olande
 Box Office Manager Shannon Bishop
 Box Office Staff Sadie Hollifield, Alyssa Johnson, Kel Sanders
 House Manager Zorica Simic
 House Crew Matt Frazier, Mitch Harris, Andrew Hatcher,
 Estevan Labrado, Lisa Raymond
 Head Dresser Jordan Campbell
 Dressers Curtis Allmon, Hannah Fonder, Caitlyn Jackson
 Laundry Hannah LeBrun, Kari Strunk
 Costume Crew Annie Bond, Jordan Campbell, Katie Comardo, Emily Eubank,
 Kimberley Gates, Marrett Hanes, Kyle Housworth, Lindsley Howard,
 Kari Strunk, Sean Slusher and the students of THAR 1331
 Scenic Crew Laura Burgess, Andrew Butler, Nicholas Campagna, Michael Davis,
 Drew Kimball, George Marsolek, Zach Miranda, Ben Myers, Danielle Ploeger,
 Candice Rogers, Liz Vermeulen, Carli Werner and the students of THAR 1330
 Make-up/Hair Crew Magz Baillio
 Lighting Crew Austin Amelio, Mary Cartwright, Erin Fleming, Matt Garcia, Jacquelyn Longoria,
 Siena Pegues, Catie Powers and the students of THAR 1330 and THAR 3323

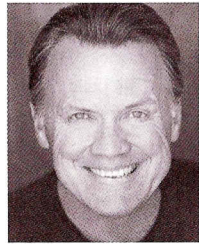
THE COMPANY

BABS GEORGE (*Martha*) returns to the Mary Moody Northern Theatre where she has been seen most recently in *bobrauschenbergamerica*, *Cloud 9* and *Way of the World*. Babs has been a professional actress for 30 years and is a member



of Actors' Equity and Screen Actors Guild. She has worked regionally in Washington D.C., Oregon, New Mexico, Utah, Michigan and Indiana. A resident of Austin for 22 years, she has been seen at Austin Shakespeare, Austin Playhouse (where she is a company member), St. Edward's University, Zachary Scott Theatre and TexArts. Recent television credits: *Friday Night Lights* and *My Generation*, an ABC TV series. Training: MFA in Classical Acting from The Shakespeare Theatre and The George Washington University. She is the creator and director of The State Theatre School of Acting. She has been an instructor in the Theatre Departments at St. Edward's University, The University of Texas, Texas State University and this spring at Southwestern University in Georgetown.

EV LUNNING JR. (*George*) has been associated with Mary Moody Northern Theatre since the summer of 1990 when he first appeared as an Equity guest artist. Soon after that, he joined the faculty as an adjunct, later served as MMNT's



business manager and finally became a professor of acting, where he has been kept busy both onstage and off. His first directing assignment for MMNT was Neil Simon's *Broadway Bound*. He most recently directed *Peer Gynt* and *On The Town*. His more recent MMNT guest-artist appearances include Dr. Chebutykin in *The Three Sisters*, Nat Miller in

Ah, Wilderness!, and Tiresias in *Antigone*. Ev has received awards from the Austin Circle of Theaters for his portrayal of Fenton Hardy in *The Hardy Boys: The Mystery of the Haunted House* (Austin Theatre for Youth) and for his direction of *A Flea in Her Ear* by Georges Feydeau at MMNT. He received the Austin Critics' Table award for Best Supporting Actor for his portrayal of Joshua Rowen in the MMNT production of *The Kentucky Cycle*. A member of AEA since 1968, Ev has appeared in most of Austin's professional venues, from Palmer Auditorium to The State Theatre to the Off Center. Ev has directed over 50 productions for professional, community and school groups, including The State Theatre Company and The Austin Shakespeare Festival. He has also taught classes in voice for The State Theatre Company School of Acting. He is a recipient of the 2006 St. Edward's Teaching Excellence Award.

KEL SANDERS '11 (*George*) is thrilled to return to the Mary Moody Northern Theater stage for the fifth time. Previous credits include *Peer Gynt*, *The Life of Galileo*, *The Pajama Game* and *Cyrano de Bergerac*. He is also currently serving as Producing Director of Transit Theatre Troupe. He would like to thank Christi Moore, Michelle Polgar, his friends, his family, Shannon and Phil for helping him get to this point.

MEREDITH MONTGOMERY '12 (*Honey*) last appeared as Dr. Defecato in *The Imaginary Invalid* at the Mary Moody Northern Theatre. She also played Waverly in the Transit Theatre Troupe's award-winning production of *Recent Tragic Events*. She directed a short scene for the Transit Theatre Troupe's New Works Festival and assistant stage managed last season's production of *The Life of Galileo* at MMNT. Meredith has also performed in many productions in Dallas, Texas, including *Nickel*, and the regional premiere of *One Shot One Kill* at Collin Theatre Centre. She is so excited to be in this production, surrounded by such amazing talent!

TARA COOPER (*Make-up/Hair Designer*) is a freelance make-up, hair and wardrobe stylist and adjunct professor at St. Edward's University. Her work can be seen both nationally and internationally and has been featured in magazines such as *The Economist*, *Forbes*, *TIME*, *Texas Monthly*, and many others, as well as in productions such as *Mamma Mia!* and *The Lion King* (Broadway Tour). She wants to thank her students, boyfriend and little dog Lulu for all of their love and support. She is happy to be designing for Mary Moody Northern Theatre once again.

K. ELIOT HAYNES (*Sound Designer*) has been a sound designer for many years. He won an Austin Critics' Table award for his sound design for *The Kinnderman Depiction* (Physical Plant). Recent designs include *The Jungle* and *Frankenstein* (Trouble Puppet Theater), *Switch, Shift, Go* and *Flush* (Ariel Dance Theater), and *Doubt: A Parable* (Zach Theatre). Eliot is also the Technical Director of the annual Fuse Box festival. He is happy to be making his debut at Mary Moody Northern Theatre, working with this very talented group of artists.

JEN J. MADISON (*Costume Designer*) has designed costumes for Austin Shakespeare's *The Tempest*, *Mary Stuart* and *A Midsummer Night's Dream*, Zilker Theatre Production's *Annie*, Mary Moody Northern Theatre's *City of Angels*, St. Steven's *Elephant Graveyard*, the University of Texas' Department of Theatre's productions of *Assassins* and *A Midsummer Night's Dream*, and Dance Repertory Theatre's productions of *Aria Redux*, *Parade* and *Sextet*. Her costume designs for *Assassins* and *A Midsummer Night's Dream* both shared recognition with the scenic designs for "Beautiful designs at UT" in the *Austin Chronicle* article "Top 10 Wonderful Things About Austin Theatre in 2008 (In No Particular Order)." She has worked at Arkansas Repertory Theatre and the Cleveland Playhouse as well.

KATHRYN EADER (*Lighting Designer*) recently moved back to her beloved Austin and is very

excited about her new role Assistant Professor of Theatre Design for St. Edward's University. Kathryn is the Resident Lighting Designer for the Butler Opera Center at UT-Austin, where she has designed nine productions including *The Elixir of Love* and last season's *A View From The Bridge*. Other Butler Opera center credits include *La Tentacion de San Antonio*, *Eugene Onegin*, *Dialogue of the Carmelites* and *The Old Majestic*. Other Austin credits include *The Glass Menagerie*, *Proof* and *A Christmas Carol* for the State Theatre and *Man of La Mancha* and *Sweet Charity* for Austin Musical Theatre. Kathryn comes to Austin from a recent position in Lighting Design at Oklahoma City University where her designs include *Don Giovanni*, *Most Happy Fella*, *Children of Eden* and *A Christmas Carol*. After completing her undergraduate degree at UT-Austin, Kathryn earned her MFA in lighting from New York University. She has worked extensively in opera with such companies as Houston Grand Opera, Portland Opera, Michigan Opera Theatre, Grande Theatre de Geneve and Lyric Opera of Chicago. Some of her opera production credits include *Porgy & Bess*, *Susannah*, *Nabucco*, *A Cabaret Evening with Catherine Malfitano*, *Faust*, *Mefistofele*, *Romeo and Juliet*, *Song of Majnun*, *Idomeneo* and *Savitiri*. In addition to her opera work she has designed many musicals and musical revues for the Drury Lane at Evergreen Park. Kathryn spends most of her time these days very focused on her most important productions — her three beautiful children; Josephine, Megan and Shane.

LEILAH STEWART (*Scene and Properties Designer*) is a freelance scenic designer and performance artist based in Austin, Texas. She returns to MMNT after designing the season opener, *The Imaginary Invalid*. Other recent designs for MMNT include *City of Angels* and *bobrauschenbergamerica*, both of which received nominations for best scenic design from the Austin Critics' Table. She is currently working on *The Method Gun* for the Wexner Center for the Arts and *I've Never Been So Happy* for the #NEWPLAY FESTIVAL at Arena Stage in Washington, D.C. Both are

original ensemble performances by the Rude Mechanicals. Leilah is also the production designer for *Hula*, an independent feature length film that is currently shooting in Austin.

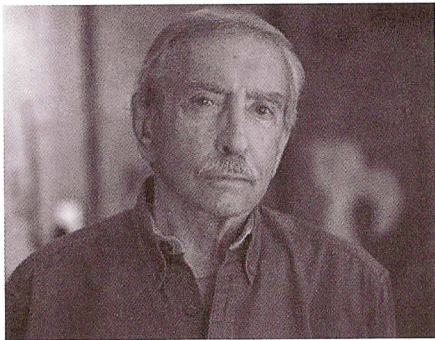
BILL MCMILLIN '79 (*Production Stage Manager*)



was the first to receive a BA in Theatre Arts Management from St. Edward's University. Bill is a member of Actors' Equity Association and the National

Stage Managers Association. An Austinite for 34 years, he has worked in all facets of theatrical production in virtually every theatre in town. Represented by TAG Talent, he has been on recent commercials for Chevrolet, Tractor Supply and Gunn Automotive, as well as voice and print media and several films. Bill serves on the National Council of Actors' Equity Association and is an adjunct instructor at St. Edward's, teaching Arts Administration, Professional Preparation and Stage Management.

EDWARD ALBEE (*Playwright*)



burst onto the American theatrical scene in the late 1950s with a variety of plays that detailed the agonies and disillusionment of that decade and the transition from the placid Eisenhower years to the turbulent 1960s. Albee's plays, with their intensity, their grappling with modern themes, and their experiments in form, startled critics and

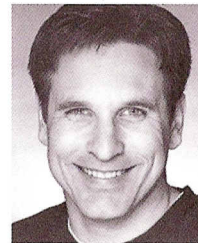
audiences alike while changing the landscape of American drama. He was unanimously hailed as the successor to Arthur Miller, Tennessee Williams and Eugene O'Neill. Albee's 25 plays form a canon that is, as Albee himself describes it, "an examination of the American Scene, an attack on the substitution of artificial for real values in our society, a condemnation of complacency, cruelty, and emasculation and vacuity, a stand against the fiction that everything in this slipping land of ours is peachy-keen." No wonder, then, that this 40-year career has seen as many commercial failures as successes. The '80s, in fact, did not yield a single Albee play that could be considered a commercial hit. "There is not always a great relationship between popularity and excellence," he says. "You just have to make the assumption you're doing good work and go on doing it." Perseverance ultimately triumphed; his most recent drama reclaimed Albee's position as America's leading dramatists. *Three Tall Women* enjoyed a stunning, sold-out success in New York and has been staged across the country and around the world. It received Best Play awards from the New York Drama Critics Circle and Outer Critics Circle and earned Albee his third Pulitzer Prize, an honor that is bested only by Eugene O'Neill's four awards. Born in Washington, D.C., Albee was adopted as an infant by Reid Albee, the son of Edward Franklin Albee of the powerful Keith-Albee vaudeville chain. He was brought up in great affluence and sent to select preparatory and military schools. Almost from the beginning, he clashed with the strong-minded Mrs. Albee, rebelling against her attempts to make him a success as well as a sportsman and a member of the Larchmont, New York, social set. Instead, young Albee pursued his interest in the arts, writing macabre and bitter stories and poetry, while associating with artists and intellectuals considered objectionable by Mrs. Albee. Albee left home when he was 20 and moved to New York's Greenwich Village, where he took to the era's counterculture and avant-garde movements. After using up his paternal grandmother's modest legacy, he

took a variety of menial jobs until 1959 when *The Zoo Story* made him a famous playwright, first in Europe, where it premiered in Berlin, and then in New York. This short work, in which a bum entices an executive to commit murder, together with 1962's full-length *Who's Afraid of Virginia Woolf?*, a brutal portrait of a hard-drinking academic couple, and 1966's *A Delicate Balance*, his first Pulitzer Prize-winner, created the mold for American drama for the rest of our century.

(Source: http://www.kennedy-center.org/explorer/artists/?entity_id=3687&source_type=A)

CHRISTINA J. MOORE (*Director*) is a theatre professional whose work has covered the gamut from directing and producing to acting and teaching. She has directed or acted in most of the theatres in Austin and a few in other Texas cities and around the country. For Mary Moody Northen Theater, she directed *Metamorphoses* and *Ring Round the Moon*. Her work has been recognized with Austin Critics' Table and B. Iden Payne Awards. Christi holds a MFA in Directing from UT-Austin and is an associate member of The Stage Directors and Choreographers Society. She has taught on the faculties of St. Edward's University, Southwestern University, UT-Austin and Austin Lyric Opera's professional apprentice program. In 1997, she co-founded ScriptWorks (formerly Austin Script Works), a playwright development and service organization where she continues to serve as Executive Director.

DAVID M. LONG (*MMNT Artistic Director*) is



an actor, director and educator who has worked professionally on both coasts and in Japan. David has served as a faculty member at Winthrop University in South Carolina and

Portland State University in Oregon and currently serves as artistic director and assistant professor of Theater Arts at St. Ed-

ward's University. Directing credits at MMNT include *The Imaginary Invalid*, *bobrauschenbergamerica*, *Cloud 9* (Austin Critics' Table Nomination for Best Comedy), *Full Circle* (Austin Critics' Table Award for Best Comedy), *Macbeth* and *Antigone*. At MMNT, he has appeared as Stone in *City of Angels*, as Cyrano (Austin Critics' Table Award) in *Cyrano de Bergerac* and as Leo Frank in *Parade*. David has presented acting and movement workshops throughout the country. He is an active member in both Actors' Equity Association and the Screen Actors' Guild. He would like to thank Tracy, Amelia and Alura for their patience and loving support.

With 17 years of experience
and 3 Chronicle "Best Of Austin"
awards under his belt ...

**FRITZ BLAW IS THE
POSTER DUDE!**

Get your message to over
150 legal posting locations
for only \$60 per week!

Have a flyer or poster?
Then have it ...



(512) 554-4034

MARY MOODY NORTHEN THEATRE SOCIETY

Through Mary Moody Northern Theatre, St. Edward's University Theater Arts majors work alongside professional actors, designers and directors in the creation of dynamic artistic work. Our students enjoy unparalleled professional training and an opportunity to earn points toward membership in the Actors' Equity Association, the union of professional actors and stage managers in the United States — all within the context of the university's nationally recognized liberal arts education.

Our program is made possible in part by the generous contributions of the Mary Moody Northern Theatre Society membership. Society contributions allow MMNT to provide students with resources for hands-on learning and to provide audiences with the rich production values that keep you returning to our performances year after year. Each year, Theatre Society members contribute more than \$24,000 to student scholarships, allowing us to maintain our commitment to educate a diverse group of Theater Arts students, regardless of their financial situation.

As a member of the society, you'll enjoy a number of exciting benefits, including invitations to special performances and opportunities to get involved with the Theater Arts program and our students on a deeper level. Your gift may be designated to scholarships, production support or capital improvements, or you may make an unrestricted gift.

We sincerely hope you will join the Theatre Society or continue as a member by making a gift to the Mary Moody Northern Theatre today. We also invite you to encourage your friends and associates to join. For more information, contact Stephani Smolucha at steps@stedwards.edu or **512-448-8451**.

Thank you for your continued support. We look forward to seeing you again at the MMNT.



PRESIDENT'S ASSOCIATES - GOLD **(\$10,000 to \$24,999)**

Rosemarie Schwarzer

PRESIDENT'S ASSOCIATES - SILVER **(\$5,000 to \$9,999)**

Shawn and Bruce Butler

PRESIDENT'S ASSOCIATES - BRONZE **(\$1,000 to \$4,999)**

Hamilton Beazley, PhD

Karen Bowen '86

Father Louis T. Brusatti

Ev Lunning Jr.

Tracy Manier and Daniel Floyd

Florence Mayne

Lewis A. Meyers Jr.

Mark and Christie Wilson

DEAN'S CLUB (\$500 to \$999)

Jay Hume

Kimberly Livingston MAC '07

William J. McMillin '79

Dr. and Mrs. Matthew Pangborn

THE HILLTOP CLUB (\$250 to \$499)

Anonymous

Mary Blackstock

Edna and Gary Blomquist '98

Jean Byers

Mr. and Mrs. Robert Campbell

Evergreen Consulting

Austin Doak

Charles Gembinski Jr.

Connie McMillan

Dr. and Mrs. Jimmy T. Mills

Joseph Parks '06

Jennifer Phlieger MAHS '00

Michelle and Robi Polgar

Ann Scott '91

Tracy Sherman '81

Anne Westdyke

Father Rick Wilkinson, CSC

THE 1885 CLUB (\$120 to \$249)

Anonymous

Alexander Bargioni '09

Richard and Kelly Bautch

Peter Beilharz

Ann Bower

Charles Browne

Richard Campbell

Maria Caswell

Kathlyn Dailey '78

Dr. and Mrs. Daniel Deguire '69

Johanna Daymond

Alejandro Diaz Jr.

Marilyn Gaddis

Charles and Dora Gembinski

Michael Guerra '83

Gerald Harrison

Leonard Heerensperger

Curtis Dean Hirsh

Theresa Hobbs

Bunny Joubert

Timothy Jurgensen

Janet Kazmirski

Ethel M. Kutac

Patrick Liddy '05

Vicky Linsalata

David and Tracy Long

Robert Luedecke

Michael Massey

Angela McCown

Pamela G. McGrew

Molly Minus

New York Life Insurance Co.

Leo Osterhaus

Rogelio Pequeno

Marisa Pisano Peterson

David Prater

Marvela L. Pritchett '02

Teri Varner

Jonathan Wooley

Timothy Wright '91

Ronald Young

CONTRIBUTOR (\$50 to \$119)

Peter Austin

Joseph Barrett

Tara Battani '00

Capital One Services, Inc.

Joe Carpenter

Helene L. Caudill

Judy Coyne '73

Brother Richard P. Daly, CSC '61

Matthew Doak '05

Michael M. Dorn

Doug Dorst

Michael Downer

Dorothy Dyer

Fidelity Investments

Phil and Pam Friday

Laurie Friedman-Fannin '79

Jerome Garvey

Theresa Garza

Sheila Marie Gordon

Robin and Brian Graham-Moore

Paul Grubb

Gerald Harrison

Loretta Hughes

Barbara Irvine

Brother George Klawitter, CSC

Francis MacConnell

Christopher J. Martinez

Theresa Mancuso

Michael Meigs

Richard Orton

Bernadine Rettger '91

Mary Rist

Adalberto Salazar

Ronald Sawey

Gary Silcott

Natalie Stott

Virginia Treasure '83

Bobby Warnecke

Mary Wall '80

Thomas Werner



Reflects gifts and pledges received between October 1, 2009, and September 30, 2010.

2010-2011 SEASON
**MARY MOODY NORTHEN
THEATRE**
ST. EDWARD'S UNIVERSITY

The Imaginary Invalid

By Molière

Translated and Adapted by David Chambers

Sept. 16-26, 2010

Who's Afraid of Virginia Woolf?

By Edward Albee

Nov. 11-21, 2010

Eurydice

By Sarah Ruhl

Feb. 3-13, 2011

On the Verge

By Eric Overmyer

March 3-13, 2011

Carousel

Music by Richard Rogers

Book and Lyrics by Oscar Hammerstein II

Based on Ferenc Molnár's Play *Liliom*

April 7-17, 2011

**TICKETS AND
SEASON PASSES**

448-8484
