

# Chekhov's

Revolutionary Passionate Romance

Presented By



# THE SEAGULL

February 8-25, 2018

Thursdays - Saturdays 7:30 pm

Sundays 3:00 pm

Low-Priced Preview Wednesday, February 7

Adapted & Directed by  
ANN CICCOLELLA

ROLLINS THEATRE  
The Long Center  
for the Performing Arts  
701 W. Riverside Drive

TICKETS: [thelongcenter.org](http://thelongcenter.org) or call (512) 474-5664



Cultural Arts



# ANNOUNCING THE AUSTIN SHAKESPEARE 2018 RAFFLE

A TRIP TO EUROPE  
YOUR CHOICE: LONDON, PARIS OR ROME



Roundtrip Airfare for Two  
Five Nights Hotel Accommodation

Only 999 Tickets Sold

\$25 for One Ticket  
\$100 for Five Tickets

Visit the Table down in the lobby to purchase tickets  
OR  
Purchase Tickets Online at [www.austinshakespeare.org](http://www.austinshakespeare.org)  
Drawing December 31, 2018

## YOUNG SHAKESPEARE 2018

### Hamlet

Performed at the Curtain Theatre,  
a replica of an Elizabethan Theatre  
7400 Coldwater Canyon (off City Park Rd.)



Performances: June 14 - 24, 2018

Young Shakespeare, our auditioned teen company, will perform the great tragedy *Hamlet* at the Curtain Theater, a replica of The Globe. Auditions begin February 17, 2018

For more information, contact [youngshakespeare@austinshakespeare.org](mailto:youngshakespeare@austinshakespeare.org)



ANN CICOLELLA, ARTISTIC DIRECTOR  
ALEX B. ALFORD, MANAGING DIRECTOR

presents

## THE SEAGULL

by Anton Chekhov

Adapted and Directed by Ann Ciccolella

Scenic Design.....CHRISTOPHER HEJL  
Costume Design.....BENJAMIN TAYLOR RIDGWAY  
Lighting Design.....PATRICK W. ANTHONY  
Sound Design.....WILLIAM MEADOWS  
Properties Design.....CHAZ SANDERS  
Production Manager.....MELINDA PARR  
Stage Manager.....JENNIFER ANDERSON  
Assistant Stage Manager.....LINDA NENNO\*  
Second Assistant Stage Manager.....CHRISTOPHER HEJL

\* denotes member Actors' Equity Assn.

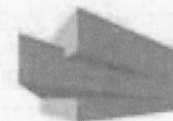
FEBRUARY 7 - 25, 2018

The Rollins Theatre of The Long Center for the Performing Arts

The Seagull is generously underwritten by



This production is presented under a Small Theatre Professional Contract with Actors' Equity Association, the Union of Professional Actors & Stage Managers in the United States. This project is supported in part by an award from the National Endowment for the Arts. Art Works. This project is supported in part by the Cultural Arts Division of the City of Austin Economic Development Dept.



Cultural Arts  
CITY OF AUSTIN  
ECONOMIC  
DEVELOPMENT



CAST (IN ORDER OF APPEARANCE)

KONSTANTIN, son of Irina.....ANDREW MATTHEWS  
 YAKOV, servant.....JET RYAN  
 MASHA, daughter of Shamrayev and Polina.....HELEN MERINO  
 MEDVEDENKO, a schoolteacher in love with Masha.....JAMES (BOBBY) BYERS  
 SORIN, brother of Irina.....EV LUNNING, JR.  
 NINA, an aspiring actress.....CORINNA BROWNING  
 POLINA, wife of Shamrayev.....SARAH STUART  
 DORN, doctor.....CHUCK WINKLER  
 SHAMRAYEV, estate manager.....PATRICK DAVID WHEELER  
 IRINA ARKADINA, an actress; mother of Konstantin.....TYLER LAYTON\*  
 TRIGORIN, a writer.....MATTHEW RADFORD DAVIES

\* denotes a member of Actors' Equity Association

Setting: Russia, Sorin's estate

There will be one 15-minute Intermission

**SPECIAL THANKS**

Borderless European Market for Russian Cookies  
 Jennifer Rose Davis for costumes  
 Helen Parish for seagull construction  
 Buffy Manners/AustinPlayhouse for costumes  
 St. Edward's University for costumes  
 Rachel Wolff

**FREE THEATER!!!!**

Interested in a Free Ticket to our next production at The Long Center Rollins Theatre? If we DON'T have your email address and you would like to provide it to one of our volunteers at the table in the lobby, we will send you an email approximately two weeks in advance of the production offering you a free ticket. Just respond to the email to claim the ticket.

NOTES FROM THE DIRECTOR

Of Chekhov's four great plays (Others: *Three Sisters*, *Uncle Vanya* and *The Cherry Orchard*), for me, *The Seagull* is the one most filled with life and love. Though Chekhov called it a "comedy," *The Seagull* has a tragic element. It can be inspiring even late in the play when Nina recalls the lines of Konstantin's play and then takes the next steps in her life. Like all of Chekhov's tragi-comedies, *The Seagull* demands ensemble performance to make a small group emerge as unique *living* characters. From a tortured writer to a charismatic actress, they come to a country estate for a break, and discover a mirror held up to their very souls. Konstantin is the catalyst who prods and provokes the group at every turn.

I have been struck by how Chekhov brings creates powerful moments in a little as ten lines of dialogue. He challenges each actor to reveal his/her soul as s/he follow their character's path. Like Shakespeare, Chekhov calls on actors and audience to stretch outside preconceived notions of climax and conflict in stories, often by making the most traditionally dramatic moments off-stage!

We hope you will let yourself be immersed in the world of *The Seagull*. You have lived through your own version of these scenes. Even with seeing through characters' comic quirks and foibles, the play can touch your inner universe if you let it. As each of us strives for what we want, we are continually surprised by what life offers. We love and lose other people. In the play, we find love, art and beauty alongside destruction. That's what makes *The Seagull* a play for all times. As Lincoln Center director Andre Gregory has observed, "Chekhov could have written his plays yesterday."



Artistic Director, Ann Ciccolella

**Russian Writers Mentioned in *The Seagull***

**Maxim Gorky** (1868-1936) (real name Alexei Peshkov) was a Russian and Soviet writer and political activist. His plays, fables, short stories, poems, and other works highlighted the struggles of the lower classes and the need for social and cultural transformation. Initially a staunch supporter of the Bolshevik regime, Gorky was a founder of socialist realism and did much to establish cultural institutions in the Soviet Union.

**Leo Tolstoy** (1828-1910) was one of the most famous Russian writers and philosophers, and one of the most acclaimed authors in the world. An aristocrat by birth, Tolstoy became famous for his realist novels "Anna Karenina," "War and Peace," an autobiographical trilogy "Childhood," "Boyhood," and "Youth," and other works. Following his profound spiritual crisis and awakening in 1870, Tolstoy started writing prolifically on spiritual topics, creating a unique system of religious and philosophical views, *tolstoyanism*.

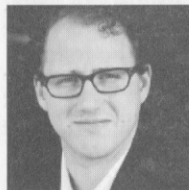
**Ivan Turgenev** (1818-1883) was a famous Russian writer, whose novel "Fathers and Sons" (1862) depicted a generational conflict between the "fathers" and the nihilist youth of the 1860's. In addition to his rich literary legacy, Turgenev is often remembered for his love for Western European culture.

## ABOUT THE CAST

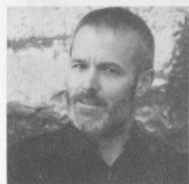


CORINNA BROWNING (Nina) Austin Shakes: *Much Ado About Nothing*, and *Present Laughter*. Other Austin credits: *The Best Little Whorehouse in Texas* (TexARTS), *Troilus and Cressida* (Something for Nothing), *Twelfth Night* (Present Company), *Apocalypse* (Bottle Alley Theatre Co.), and *The Gondoliers* (Gilbert & Sullivan Austin, B. Iden Payne nominee).

Corinna holds a Bachelor of Arts in Theatre from Wayland Baptist University and a Master of Music in Vocal Performance from West Texas A&M. She is also a singer, and visual artist from Channing, Texas.

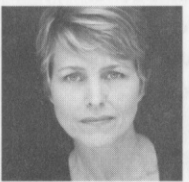


JAMES "BOBBY" BYERS (Medvedenko) Austin Shakes: Roderigo in *Othello* 2014. Training: BA in English Literature and History, St. Edward's University; MLitt and MFA in Shakespeare & Performance, Mary Baldwin University.



MATT RADFORD DAVIES (Trigorin) Austin Shakespeare: Claudius in *Hamlet*, Buckingham in *Richard III*; (Best Supporting Actor, Austin Critics Table), Jack Absolute in *The Rivals*, Benedick in *Much Ado About Nothing* (Best Actor, B. Iden Payne), Duke Vincentio in *Measure for Measure*. UK, London:

Latchmere, Cockpit, New End, Bloomsbury, Battersea, Orange Tree. UK, Regional: Manchester Royal Exchange, Glasgow Citizens, Northampton Royal Theatre, Coventry Belgrade, Bolton Octagon (Best Actor, Manchester Evening News). US Regional: Chesapeake Shakespeare, Virginia Shakespeare Festival, American Shakespeare Center, Quill Theatre (Best Actor, Shylock, Richmond Critics Circle). Training: BA in English Literature from Exeter University; PhD in Renaissance Drama The University of Texas at Austin.

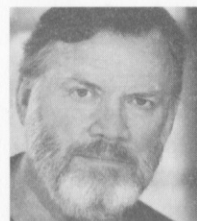


TYLER LAYTON\* (Irina Arkadina) Austin Shakes debut. Tyler moved to Austin in 2015 as Assistant Professor of Theatre at St. Edward's University. She was a professional actress for over 25 years including seven seasons at The Oregon Shakespeare Festival. Favorite roles there include Callie in *Stop Kiss*, Cressida in *Troilus and Cressida*, Brooke in *Noises Off*, Joan of Arc in *Henry VI Part One*, Cherie in *Bus Stop* and Izzy in *Rabbit Hole*.

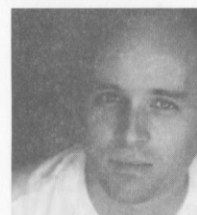
At The Utah Shakespeare Festival her favorite roles were Celia in *As You Like It*, Dolly in *You Never Can Tell*, Gwendolyn in *The Importance of Being Earnest* and Mrs. Manningham in *Gaslight*. Other: The Milwaukee Rep, Colorado Shakespeare Festival, where she played Isabella in *Measure for Measure*, and Freeport Shakespeare Festival, as Olivia in *Twelfth Night*. TV credits include recurring roles on *Ellen* and *Charmed* and the series lead on USA Network's *Silk Stalkings*.

\*denotes member Actors' Equity Association

## ABOUT THE CAST



EV LUNNING, JR. (Sorin) Austin Shakes: *Shaw's Man and Superman* and the staged reading of Arthur Miller's *The Crucible*, both directed by Ann Ciccolella. Ev recently retired from the Theater Arts Department of St. Edward's University where he acted in and directed many productions at the Mary Moody Northen Theater. He received an Austin Critics' Table Award for Best Supporting Actor for his work in the 2003 *The Kentucky Cycle*. Since arriving in Austin in 1983, Ev has appeared in productions at Zach, Univ. of Texas Dept. of Theater and Dance, and AustinPlayhouse. This season he has appeared in *The Dresser* for Different Stages and *Pocattello* for Street Corner Arts. A member of the Austin Opera Chorus, Ev has appeared in eight productions, recently in this season's *Carmen*. Ev has recorded 70+ volumes for the Texas State Library's "Talking Book Program" as a volunteer narrator.



ANDREW MATTHEWS (Konstantin) Austin Shakes: *Wolf Hall* staged reading, *A Midsummer Night's Dream* (Zilker Park.) TV: *Day 5* (Rooster Teeth); *Hidden America with Jonah Ray* (Seeso). THEATRE: *Hamlet* (Black Swan Productions); *The Skin of Our Teeth* (Different Stages); *The Elephant Man* (Andak Stage Company); *The Prince of L.A.* (Old Globe Theatre). Director/Animator of PBS Digital

Studios web series *Two Cents*. MFA in Classical Acting, ACA at The George Washington University.



HELEN MERINO (Masha) Austin Shakes: Elizabeth Proctor, *The Crucible* (staged reading); Anne Boleyn, *Wolf Hall*; Lady Macbeth, *Macbeth* (2016); Chorus, *Medea*; Emily Dickinson, *The Belle of Amherst*; Gilda, *Design for Living*; Hamlet, *Hamlet* at The Rollins 2011; Liberty 5-3000, *Anthem*; Mary, *Mary Stuart*; Hamlet, *Hamlet* in Zilker Park 2001. Off Broadway/NYC: *The Soldier Dreams* (Theatre

Row/Lion Theatre), *Taboos* (Soho Playhouse), *Eye of God* (Lion/Theatre Row). ZACH: *Present Laughter*, *Bad Dates*, *Omnium-Gatherum*, *Who's Afraid of Virginia Woolf?*, *Vagina Monologues*, *Bee Luther- Hatchee*, *Pride's Crossing*, *My Children My Africa*, *The Last Night of Ballyhoo*. TheatreWorks, Austin: *Madame X*, *As You Like It*, *Antigone: Looking into the Sun*. State Theatre: *Anton in Show Business*. Films: *Fast Food Nation*, *Cassidy Kids*, *Gretchen*, *The Interview*, *Wild Canaries*.

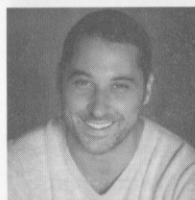


JET RYAN (Yakov) Austin Shakes: Dr. Pinch's assistant, *The Comedy of Errors*; Amos Hart, *Chicago* (Vail Valley Theatre Company). Austin Shakespeare Crew member since 2016. Jet is a stunt performer/scare actor at House of Torment in Austin.

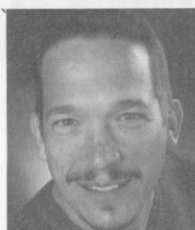
## ABOUT THE CAST



SARAH STUART (Polina) Played the role of Ellen in Univ. of Texas New Theatre's play festival 2016 production of *381 Bleecker*. A former member of the Conservatory of Theatre Arts in St. Louis, Missouri and the Pacific Conservatory of the Performing Arts in Santa Maria, California. Sarah has directed and acted in numerous musicals and plays including "Emilia" in *Othello*, "Mrs. Nordstrom" in *A Little Night Music*, "Arlene" in *Getting Out*, "Theresa" in *The Hostage*, "Nancy" in *Oliver*, "Corps de Mime" in *Michelangelo* and "Nancy" in *Larkrise*. Training: BFA Acting, Conservatory at Webster University, British American Drama Academy, Oxford, UK.



PATRICK DAVID WHEELER (Shamrayev) Austin Shakes: Borachio in this season's *Much Ado About Nothing*. The City Theatre (Austin) credits include Bill Fordham in *August: Osage County*, Amos Hart in *Chicago*, and the title role in *Hamlet*. Also: The Connecticut Repertory Theater, Hole in the Wall Theater, and Playhouse on Park. A co-founder and former vice-president of The One-Eyed Jacks Theater Co. in the central Connecticut area.



CHUCK WINKLER (Dr. Dorn) Austin Shakespeare debut. Chuck has appeared as a singer with Houston Grand Opera (HGO) in 95 productions between 1990 and 2009. World premieres with HGO: *Harvey Milk*, *Song of Majnun*, *Jackie O*, *Cold Sassy Tree*, *Florencia en el Amazonas*, *Desert of Roses*, *Resurrection*, *The Refuge*. With Robert Wilson: *Parsifal*, *Four Saints in Three Acts*, *Persephone*. Training: BA Theater and Music, Concordia University-Chicago.

## ABOUT THE PRODUCTION TEAM



JENNIFER ANDERSON (Stage Manager) Austin Shakespeare: *Wolf Hall*. *Footloose* (Zilker Theatre Productions); *Flight*, *The Italian Girl in Algiers*, *La traviata*, *Hansel and Gretel*, *The Star*, *La bohème*, *Dialogues des Carmélites*, *Rigoletto* (Austin Opera); *Here's to You*, *House of Several Stories* (Imagine That Productions); *When Something Wonderful Ends* (Red Then Productions); *The Clean House*, *Plays Well with Others* (Zach Theatre). Production Assistant 30+ shows at ZACH. Three seasons as Artistic Administrator for Spotlight on Opera.

## ABOUT THE PRODUCTION TEAM

PATRICK W. ANTHONY (Lighting Design) is a freelance designer and master electrician based in Austin. He holds a Bachelor of Arts in Theatre from Loyola University, New Orleans, and studied Scene Design at the Lir Academy of Trinity College, Dublin. Austin Shakes: Patrick has designed lights for *Much Ado about Nothing 2017*, *The Crucible*, *The Comedy of Errors*, *Old Times*, *Present Laughter*, *Wolf Hall*, *Macbeth 2016*, *Medea*, *A Streetcar Named Desire* and Young Shakespeare's *As You Like It*, *Twelfth Night* and *A Midsummer Night's Dream*. He has designed scenery for *Much Ado about Nothing 2017*, *The Comedy of Errors*, *Old Times*, *The Taming of the Shrew*, and Young Shakespeare's *As You Like It* and *Twelfth Night*. He's the recipient of the 2011 B. Iden Payne award for Outstanding Lighting Design. He currently teaches Stagecraft at Southwestern University.

CHRISTOHPER HEJL (Scenic Design) Austin Shakespeare: Technical Director, *Present Laughter*; Jodelet/Cadet, *Cyrano de Bergerac*. Austin, *True West* (Weird Rodeo); Jim, *The 70 Secrets of Marmalade Kittens* (UTNT); Teacher, *Love in Pine* (Last Act Theatre Company); Elliot, *MilkMilkLemonade* (Shrewd Productions); Romeo, *Romeo and Juliet* (Shakespeare Shakedown); Peter, *peter~wendy* (Rady Bloom Productions). Training: B.S. in Theater, Northwestern University; Long-form Improv, One Group Mind Theater & The Magnet Theater.



WILLIAM MEADOWS (Sound Design) has been the sound designer for Blue Lapis Light for over twenty years. Recent projects include Forklift Danceworks' *Bartholomew Swims*, Jennifer Sherburn's *11:11*, ACC Dance and Austin Dance India. He has done sound design for Austin Shakespeare productions of *Henry V*, *Cyrano*, *The Invention of Love*, *Medea*, *Wolf Hall*, *Present Laughter*, and *Much Ado about Nothing 2017*. His work has been recognized with an Austin Critics' Table Award for Best Sound Design in 2007 and 2010, and with numerous nominations for Best Original Composition, Best Sound Design, and Best Lighting Design.



LINDA NENNO (Assistant Stage Manager\*) Austin Shakespeare: *Old Woman*, *Sunday in the Park with George*; *The Witch*, *Into the Woods* (University of Texas Opera); *Fosca*, *Passion* (concert version at ZACH). Her first Sondheim was *Company* at Equity Library Theatre in New York City. Linda made her Broadway debut in *Grease* and performed in many New York and Broadway productions including: *Anything Goes*, *Romanov*, *Ludlow Fair* and *Picnic*. Linda is currently on the Faculty of Texas State University Department of Theatre and Dance.

\*denotes member Actors' Equity Association

## ABOUT THE PRODUCTION TEAM

MELINDA PARR (Production Manager) Austin Shakespeare: *Much Ado about Nothing 2017, The Crucible, The Comedy of Errors, Old Times, Present Laughter, Wolf Hall, Macbeth 2016, Medea, A Streetcar Named Desire, Sunday In the Park with George, The Taming of the Shrew, The Invention of Love, Cyrano de Bergerac, As You Like It, Medea, Design for Living, Pride and Prejudice* among others; Other favorites: *Oklahoma!, Little Shop of Horrors, The Sound of Music, Footloose, Annie, The Music Man, The Secret Garden, Annie Get Your Gun* and *Beauty and the Beast* with Zilker Theatre Productions.

MARINA ALEXANDROVA POTOPYLAK (Dramaturg) Born and raised in Saratov, Russia, she received her MA equivalent in English from Saratov State University, and her PhD in Comparative Literature (Russian and Spanish American Literatures) from the University of Texas at Austin. Her dissertation analyzes the formation of the literary public spheres in Russia and Argentina, focusing on the avant-garde literary groups and their complex interactions with the state. Marina's current research interests include Russian modernism and the avant-garde, Russian food studies, and the history of Russian radical and revolutionary movements. This spring she is teaching a new course, "Advanced Russian through Drama," that culminates in a student production of a controversial comedy "Bedbug" (1928) by Vladimir Mayakovsky.



CHAZ SANDERS (Properties Design) Austin Shakes: *Much Ado about Nothing 2017, The Crucible, The Comedy of Errors, Old Times, Present Laughter, Macbeth, The Invention of Love, Young Shakespeare's Twelfth Night*. Chaz is a recent graduate of Southwestern University where he received a BA in Theatre. He is also a lighting designer and props designer. Chaz has done props design for: *Sherlock Holmes, The Mountaintop, Smudge, and Incline/Decline*.



BENJAMIN TAYLOR RIDGWAY (Costume Design) graduated from St. Edward's University in 2007 and moved to New York designing for Theatre East and Shakespeare NYC. Upon returning to Austin in 2010, he began working with many Austin theater companies. Austin Shakes: *Much Ado about Nothing 2017, The Crucible, Old Times, Present Laughter, and Macbeth 2016*. Other: *Mr. Burns post electric play, Mouthful* and *Rhinoceros* at St. Edwards University. He will design *The Member of the Wedding* with Different Stages and assist Susan Branch Towne with *(Anon)ymous* at St. Edwards this spring.

## SPONSORSHIPS/UNDERWRITERS/FOUNDATION/CORPORATE

### Austin Shakespeare proudly acknowledges its Major Supporters

#### Season Sponsor (\$100,000)

City of Austin Cultural Arts

#### Season Sponsor (\$10,000 - \$99,999)

Texas Commission on the Arts

#### The Seagull Underwriter (\$15,000)

Fifth Age of Man Foundation

#### Free Shakespeare in the Park Sponsor (\$12,000)

Perry Lorenz

#### Young Shakespeare Sponsors (\$10,000)

Annie Chandler

Fred & Julie Frey\*^

#### Foundation (\$5,000 - \$9,999)

Prometheus Foundation

#### Foundation (under \$1,000)

Amazon Smile Foundation

Jewish Federation of Metropolitan Chicago

#### Corporate (\$1,000 - \$4,999)

Graves Hearon Dougherty & Moody

I Live Here, I Give Here

Independence Title

#### Corporate (under \$1,000)

Albertson's Safeway

American Short Fiction

Arrowhead Custom Framing

Capital Anesthesiology Association

Charles Schwab and Co., Inc.

Chevron USA

KPMG

Live Oak Brewery

Maxwell, Locke & Ritter

Punta Reyes Properties

#### Underwriters

\$10,000

Eva & Marvin Womack

#### \$5,000 - \$9,999

John A. & Elizabeth M. Allison

Diana Borden^\*

Julia M. Marsden\*

Carolyn & Marc Seriff \*

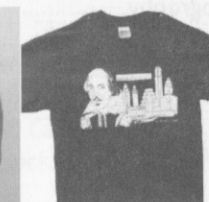
Sheila Steiner Asher

^ denotes Amplify Austin Donor

\* denotes Multi-Year Society

### SUPPORT AUSTIN SHAKESPEARE AND LOOK GREAT WHILE DOING IT

Choose between our show t-shirt for *The Comedy of Errors* in white, or our classic Austin Shakespeare "All Austin's a Stage" t-shirt in Galapagos blue. Either way you'll look fabulous. **ONLY \$20!!!** Sizes S, M, L, XL, XXL and XXXL. Purchase at the table down front or go online to at [austinshakespeare.org](http://austinshakespeare.org).



THE PRODUCTION & ADMINISTRATIVE STAFF

Production Staff

Director.....	Ann Ciccolella
Scenic Designer.....	Christopher Hejl
Costume Designer.....	Benjamin Taylor Ridgway
Assistant Costume Designer.....	Brandy Lee
Lighting Designer.....	Patrick W. Anthony
Sound Designer.....	William Meadows
Properties Designer.....	Chaz Sanders
Dramaturg.....	Marina Alexandrova Potopylak
Stage Manager.....	Jennifer Anderson
Assistant Stage Manager.....	Linda Nenno*
Second Assistant Stage Manager.....	Christopher Hejl
Production Manager.....	Melinda Parr
Light Board Operator.....	Jesse Walser-Castro
Sound Board Operator.....	Mike Dartt
Technical Director.....	Kevin Squires
Master Electrician.....	Chaz Sanders
Electricians.....	Patrick W. Anthony, Will Campbell Yi-Tai Chung, Kansas Rezac, Jacqueline Sindelar
Scenic Charge.....	Sydney Hutchison
Carpenters.....	David Boss, Jozef Winemiller
Painter.....	Chaz Sanders
Stage Crew.....	Jet Ryan, David Patrick Wheeler
Wardrobe Supervisor.....	Katie Hooper
Stitcher.....	Jennifer R. Davis

*\*denotes member of Actors' Equity*

*Association*

Administrative Staff

Artistic Director.....	Ann Ciccolella
Managing Director.....	Alex B. Alford
Assistant to the Managing Director.....	Laura A. Walberg
Administrative Assistant.....	Martha Withers
Education Coordinator.....	Gwendolyn Kelso
Young Shakespeare Coordinator.....	Nicole Shiro
Advertising Representative.....	Phil Judah
Poster and Program Cover Design.....	David Nichols
Photography.....	Erich Peterson
Publicity.....	Jess Hughes, Amy Layton, Motley Crew Media

DIRECTOR'S CIRCLE (\$1,000 - \$4,999)

Anonymous  
 Carol & Chris Adams^\*  
 Linda Ball & Forrest Preece\*  
 Joy Baskin  
 Richard Boner & Susan J. Pryor\*  
 Kathryn & Thomas Cronk  
 Bill Dickson^\*  
 Charles Duggan\*  
 Helen & Larry Foster ^\*  
 Laura & Tom Green\*  
 Laura Gutierrez-Witt\*  
 Richard Hartgrove & Gary Cooper^\*  
 Charlotte Herzele\*  
 Kathleen Higgins^\*  
 Lisa Jones^\*  
 Michael Jones & Martin Rodriguez^\*  
 Mary Keeney^\*  
 Peter LePort  
 Lou Ann & Bill Lasher\*  
 Sanford & Cynthia Y. Levinson\*  
 Al & Leslie P. Martinich^\*  
 Sue & Phil Maxwell^\*  
 Susan McLeland & Joe Freeland\*  
 Connie McMillan\*  
 William J. McMillin & Mary E. Furse^\*  
 John & Marcy Melanson  
 Helen Merino^\*  
 Barbara B. Miller\*  
 Richard E. Mitchell^\*  
 Mary & Steve Nichols\*  
 Linda & Paul Parrish^\*  
 Nancy Scanlan^\*  
 Tara Smith\*  
 Leslie Thomas^\*  
 Catherine & David Wildermuth^\*  
 David & Leslie Wolff  
 John & Steffi Yearwood\*

*^ denotes Amplify Austin Donor*

*\* denotes Multi-Year Society*

BENEFACTORS (\$500 - \$999)

Shelley & Jim Austin^  
 Karen Bartoletti  
 Jill & Tim Blackwood  
 Sue & Dewey Breland^\*  
 Gayle Cannon^\*  
 Mary Alice Carnes^\*  
 Nell Dale & Dean Sanders^  
 Valerie D'Antonio^\*  
 Franchelle & Edwin Dorn^\*  
 Pam & Phil Friday^  
 Margaret Lewis Furse\*  
 Cheryl George\*  
 Kelly Carolyn Gordon^  
 Deborah Green & Clayton  
 Aynesworth  
 Joan & David Hilgers  
 Karen Jambon & Jennie Underwood  
 Lori Knowlton & Duane Tharp^  
 Bernth & Judith Lindfors\*  
 Jennifer Long  
 Eleanor & Ron Luke\*  
 Gerard Peperone  
 Carolyn Rodman^  
 Susan Sharlot^\*  
 Philip & Sylvia Spertus\*  
 Michele Deitch & Michael Sturley^\*  
 Shanée Woodbridge^\*  
 Lucia & Paul Woodruff^

SUSTAINERS (\$250 - \$499)

A Friend  
 Alex B. Alford^\*  
 Andrea & Jack Angelo^\*  
 Heather & Reed Arnos^  
 William & Jean Avera^  
 Mary C. Baughman & Dave Sullivan^\*  
 Frances Bennett  
 Elise Bright  
 Scott & Desirée Brutocao  
 Dan Bullock & Annette Carozzi  
 Barbara & Michael Cavanaugh\*  
 Susan Conway & Jack Howell  
 Bonnie Drenik\*  
 Mr. & Mrs. Claude E. Ducloux  
 Sharon Dunn & Robert Prentice^\*  
 Emilio Englade\*

SUSTAINERS (\$250 - \$499) CONT'D

Judy & Frank Gordon  
 Tim & Melissa Gray  
 Jennifer R. Greene  
 Kathleen & Harvey Guion\*  
 Corky Hilliard\*  
 Craig & Peggy Kuglen  
 Pamela Lenart  
 Becky Liendo^\*  
 Toni Lucus  
 Michael Meigs & Karen Milton\*  
 Nicole Schiro & Ted Magee\*  
 Evan Picoult  
 Andrea E. Pully^

SUPPORTERS (\$100 - \$249)

Anonymous^  
 Karen C. Aalund  
 Norma Alford^\*  
 Robert Andrew^  
 Shelley Auer  
 Glad & Len Baumel  
 Elizabeth Beckham^  
 Marguerite Biesele\*  
 Leslie Bradshaw^  
 Annie Burridge & Paul Richichi  
 Karen & Andy Campbell^  
 Louis Campbell  
 Faye Chandler^  
 Elizabeth Christian^\*  
 Ann Chick^  
 Marian Claman^  
 Terry & Wayne Cook  
 Nancy Cooper^\*  
 Judy & Roger Corwin\*  
 James Cousar  
 Mary Cox and Perry Heston^\*  
 Jennifer Rose Davis^  
 Carolyn Rhea Drapes^\*  
 David Edwards^  
 Liz Engelman^  
 Shiree Flume^  
 Randy & Kathy Frederick^  
 Ben Frey^  
 Jack Frey^

SUPPORTERS (\$100 - \$249) CONT'D

Shelley Friend & Travis Kessler^  
 Eugene Garver  
 Babs George^\*  
 Carlos Gil^  
 Melissa Goodrich  
 Lino & Carolyn Graglia  
 Ann S. Graham\*  
 John Greytok^\*  
 Susan Hammer^\*  
 Dr. Billy F. Harden  
 D Herrera^\*  
 Julia Houston Rector^\*  
 Jeff & Gail Kodosky\*  
 Kathy Lagaza^  
 Christopher Lanier^\*  
 Amy Layton^  
 Dick Leverich  
 Glenn Lewis  
 Paul Lewis^  
 Eileen & Ed Lundy\*  
 Chuck Lutke^  
 Gail Minault\*  
 Nagavalli^  
 Jerele & Elizabeth Neeld^  
 Linda Nenno^  
 Catherine P. Nichols & Robert Borden^  
 Donna Oshatz^\*  
 John B. Payne^\*  
 Margaret & George Perry^\*  
 Brant Pope\*  
 Nancy Radwin^  
 Laura Redfern^  
 Martha Rochelle^\*  
 Susan M. Rodriguez  
 Candyce Rusk  
 Deborah & Paul Rutt  
 Martha Salazar^\*  
 John & Eileen Scott  
 Nicole Shiro^\*

^ denotes Amplify Austin Donor  
 \* denotes Multi-Year Society

SUPPORTERS (\$100 - \$249) CONT'D

Maureen Slabaugh  
 David E. Soileau  
 Barbara Springer\*  
 Sarah Stuart  
 Robert Tolaro^  
 Carl & Carol Trovall\*  
 Virginia Urban\*  
 Mike & Stacey Ussery^\*  
 Dirk Van Allen^  
 Laura A. Walberg^  
 Mary Ward\*  
 Francis (Kit) & Beth Webster^\*  
 Patti Weissler^\*  
 Ann & Evan Wilson\*  
 Suzanne Wofford  
 Ben & Glenda Wolfe^  
 Angela C. Woodbury\*  
 Debbie Zappen\*

DONORS (\$50 - \$99)

Anonymous^  
 Sharron Anderson^  
 Allan Baker^  
 Molly Bean^  
 Ellen Bettis^  
 The Doles Family^  
 Laura Ehrlich  
 Marie-Françoise Ertlé  
 Mary & Bill Finch^  
 Sophie Frey^  
 Dell Hollingsworth^  
 Mary C. Ivy^  
 Marsha Jensen  
 John M. Jordan^  
 June Julian^  
 Ethel M. Kutac  
 Rebecca Lewis^  
 Louise Lynch  
 Ian & Buffy Manners^  
 Amy McAndrew^  
 Vicki McKain  
 Ann McNair  
 Alan C. & Amy S. Miller  
 Michael Miller^

DONORS (\$50 - \$99) CONT'D

Keely Rhodes^  
 Shannon Richey  
 Heath Riddles  
 JD Robertson^  
 Tracey Rogers  
 Melissa Ruof^\*  
 Marion Sanchez^\*  
 Marchelle Scarnier Surplus\*  
 Elizabeth Schaub & Karl Richichi  
 Gerry Schwartz  
 Gail D. Smith  
 Jerry & Martha Withers^

^ denotes Amplify Austin Donor  
 \* denotes Multi-Year Society

**Board of Directors**

Fred Frey, President  
 Maxwell, Locke & Ritter

Marc Pouhé, Vice President  
 American Cancer Society

Paul Parrish, Secretary  
 Texas A&M University Regents  
 Professor Emeritus

Diana Borden, Treasurer  
 Hajjar/Peters, LLP

Helen Foster  
 Graves, Dougherty, Hearon &  
 Moody

Kathleen Higgins  
 University of Texas at Austin

Lisa Jones  
 Texas Senate

Leslie Martinich  
 Competitive Focus



NOW CELEBRATING 20 YEARS OF QUALITY SERVICE

## Austin Art & Frame

Fine Art · Giclee Printing · Custom Framing

Shop local - See you soon!



Dan Radin

2805 Bee Cave Rd #430  
The Shops at Mira Vista  
2 minutes from Zilker Park



Melissa Kotzev

512-306-1064

dan@austinartframe.com melissa@austinartframe.com

austinartframe.com



### UNIVERSAL PUBLISHERS

Special Events Advertising

www.upstages.com • (512) 478-6306

#### ABOUT THE STAFF



**ANN CICCOLELLA** (Artistic Director/Co-Director) As Artistic Director since 2007 Ann has directed: *Macbeth* (2016), *The Taming of the Shrew* set in Austin 1890's (2015), *As You Like It* (2014), *The Winter's Tale* (2013), *Bollywood Twelfth Night* (2012), *The Dream* (2010), a Pachuco-style *Romeo and Juliet* (2009) and *Much Ado About Nothing* (2008) for Free Shakespeare in Zilker Park. In the Rollins Studio Theatre, she has staged *Much Ado about Nothing* (2017), *The Crucible*, *Old Times*, *Present Laughter*, *Wolf Hall*, *Medea*, a Staged Concert Reading of *Sunday in the Park with George*, *A Streetcar Named Desire*, *The Invention of Love*, *Cyrano de Bergerac*, *Othello*, *The Belle of Amherst*, *Hamlet*, the world premiere of Ayn Rand's *Anthem*, *Arcadia*, *Design for Living*, *Pride and Prejudice*, *Man and Superman*, *An Ideal Husband*, *Measure for Measure*, *Mary Stuart*, *The Tempest* and *Macbeth*. For Austin Shakespeare's "Young Shakespeare" professional program for teen actors, Ann with Nancy Eyer-mann, co-directed *A Midsummer Night's Dream*. She directed *As You Like It*, *The Tempest*, a bilingual *Romeo y Julieta*, and *Julius Caesar* at Richard Garriott de Cayeaux's Curtain Theater. In New York, she directed *The Oresteia Trilogy* at the New York Studio Theatre and did an East Coast tour of *Oedipus Rex* for Renaissance Theater Company. Ann served as executive director for Austin Circle of Theaters (now Austin Creative Alliance), a service organization for Austin's 70 theaters, dance and music groups. At ZACH, Ann served as Stage Director for: *Cabaret*, *Vagina Monologues*, *Full Gallop*, *Closer*, *Master Class*, and *Misery*. For ten years, she led the Renaissance Theater Company as Artistic Director, producing and directing Off-Broadway and along the East Coast; culminating with *Side by Side by Sondheim* and Sondheim's *A Little Night Music*. Ann is a graduate of NYU in Dramatic Literature, History of Theater and Cinema. For Austin Shakespeare 2013, Ann directed and produced Jeff Britting's adaptation of Ayn Rand's *Anthem* Off-Broadway in NYC at the Baryshnikov Arts Center. Ann has also directed Sondheim's *Into the Woods* (Zilker Theater Productions) as well as concert versions of *Passion* and *Merry We Roll Along* at ZACH's Kleberg Stage.



**ALEX B. ALFORD** (Managing Director) for the past nine years, Alex has served as Austin Shakespeare's first Managing Director. He worked at Austin Opera for 14 years in a variety of positions, including Director of Administration to Director of Board and Volunteer Services. His previous experience also includes a 12-year stint at ZACH Theatre as Box Office Manager, Volunteer Coordinator, and Project InterAct Business Manager. During this time he was honored to work with Artistic Director Ann Ciccolella. He has served as President of the Board of Austin Circle of Theaters (now Austin Creative Alliance) and Treasurer for the Rude Mechanicals. Alex holds a B.A. in History from the University of Texas, summa cum laude.

## AUSTIN SHAKESPEARE UPCOMING PRODUCTIONS

### **The Merry Wives of Windsor, Texas**

Free Shakespeare in Zilker Park  
May 3 - 27, 2018 Beverly S. Sheffield Zilker  
Hillside Theatre



**Young Shakespeare** presents its tenth year  
at The Curtain Theatre, Austin's replica of an  
Elizabethan theater, with Shakespeare's **Hamlet**,  
performed by a teen cast. June 14 – 24, 2018  
The Curtain Theatre



### **A Midsummer Night's Dream**

scenes from the play in collaboration with  
Austin Chamber Music Center's 2018 Summer  
Music Festival Sunday, July 22, 2018 at 4:00 pm  
University of Texas Bates Recital Hall.

With chamber music under the direction of  
Austin Chamber Music Director, Michelle Schumann



Follow us on Facebook and Twitter:  
[facebook.com/austinshakespeare](https://www.facebook.com/austinshakespeare)  
[@austinshakes](https://twitter.com/austinshakes)

### **AUSTIN SHAKESPEARE**

Founded in 1984, Austin Shakespeare presents professional theater of quality in Central Texas with an emphasis on the plays of William Shakespeare. Bringing to the public performances that are fresh, bold, imaginative, thought-provoking, and eminently accessible, Austin Shakespeare connects the truths of the past with the challenges and possibilities of today. Austin Shakespeare offers "Shakespeare Studio," the organization's professional actor training courses and The Artists Way sessions weekly for adults. In addition, actors, readers, teachers, parents and students are welcome at the "Shakespeare Aloud" year-round weekly reading group. Austin Shakespeare offers a full complement of education programs for students and adults.

For more information, visit the Austin Shakespeare website at  
[www.austinshakespeare.org](http://www.austinshakespeare.org)