



Photography by:
Elaine Funk

Graphic Design by:
Rich Simms

I HATE HAMLET

Show Dates:

Weekends Jan. 13 to Feb. 5, 2012

Fridays & Saturdays @ 7:30 pm

Sundays @ 2:00 pm

Ticket Prices:

\$24 General

\$22 Seniors (55+)

\$14 Active Military
& Students (13-22)

\$10 Children (12 & under)

810 S. Austin Ave.
In Historic Georgetown
Just off the Square...
(512) 869-7469

www.thegeorgetownpalace.org



The Cast in order of appearance

Felicia Dantine.....Suzanne Orzech
Andrew Rally..... Ismael Soto III
Deirdre McDavey.....Samantha Ireland
Lillian Troy..... Nikki Bora
John Barrymore..... Kyle Evans
Gary Peter LefkowitzDana Barnes

Act 1

The top floor apartment of a brownstone just off Washington Square
in New York City. Present day.

Act II

Scene I: The apartment, six weeks later. Opening night.

Scene II: 7:00 a.m. the next morning

From the Playwright:

I Hate Hamlet was inspired by circumstances: a few years back, I answered an ad in the *New York Times* real estate section for a "medieval duplex." The apartment had been occupied by John Barrymore in 1917, and he had renovated the premises into a Gothic retreat which he titled "The Alchemist's Corner." More detailed information on both Barrymore and the apartment can be found in any number of Barrymore biographies, including Gene Fowler's *Good Night*, *Sweet Prince* and Margot Peters' more recent *The House of Barrymore*.

I Hate Hamlet is presented through exclusive arrangement with Dramatists Play Service, 440 Park Ave. South New York, NY 10016. The Palace is a member of the Greater Austin Creative Alliance, the Downtown Georgetown Association, the Georgetown Chamber of Commerce, and the League of Historic American Theatres.

PRODUCTION TEAM

Director	David Sray
Fight Choreographer	Toby Minor
Costume Design	Tamar Madrigal
Technical Director	Ron Watson
Stage Manager	Jessie Drollette
Assistant Stage Manager	Kristie Loescher
Lighting Designer	Clifford Butler
Original Music	Kim Sherman
Sound Engineer / Operator	Phil Kokajko
Prop Mistress	Tamar Madrigal
Running Crew	Telisa Harwell, Claire Loescher
.....	Boni Kokajko, Jim Mutzabaugh, Jennifer Reiley
Set Build Leader	John Argersinger
Set Construction	Larry Baird, Charlie Black, John Carnes, Albert Daniels
.....	Roger Danley, Michael Davis, Chuck Dawson, Bill Gardiner
.....	Ed Harmes, Barb Jernigan, Bob Kostka, Dan Leo, Ed McCrary
.....	Charlie Mettler, Jerry Pinero, Richard Stelle, Jim Wilhite, Dave Wright
Scenic Artist	Barb Jernigan
Set Painters	Barb Jernigan, Sue Williams
Poster Design	Rich Simms
Playbill Design & Preparation	Sonja Asendorf & Marsha Sray
Playbill Shell/Cover Design & Preparation	Lucas Adams
Season Graphic Designer	Barb Jernigan
Photographer	Elaine Funk

Resident Artists & Palace Staff

Artistic Director	Mary Ellen Butler
Associate Artistic Director	Ron Watson
Equipment Manager	Jessie Drollette
Scenic Artist	Barb Jernigan
Operations Manager	Sonja Asendorf
Office Manager	Marsha Sray
Office Administrator	Elaine Dobbs
Production Administrator	Amy Minor
House Managers	Monti MacMillan, Jan McCormick, Elaine Dobbs
Lobby Computer	Allison McKee, Elaine Dobbs, Sam Bethke

Originally produced by Jujamcyn Theatres,
James B. Freyberg, Robert G. Perkins, Margo Lion.
Original production directed by Michael Engler

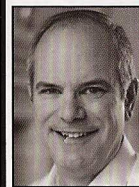
Company Bios



Dana S. Barnes (Gary) is blessed to be back at the Palace where the lights stay on throughout Act II. In Dana's words: "To our Director David Sray, a sincere thank you for seeing me in this role when I didn't even fathom it during auditions, it ranks up with my personal favorite portrayals. To Jessie and Kristie for being the solid foundation that keeps all backstage activities professional in nature. To our cast, I express my humble appreciation to you for being instrumental in creating such a fantastic rendition. I have never laughed so much before being off book ever!! Finally, no bio would be complete without acknowledging the Fabulous Rebecca. I love you more than mere words can express, thanks for supporting my love of the arts."



Nikki Bora (Lillian) is privileged to be in such a funny production with such a stellar cast. She was last seen chasing flying monkeys in Oz. She could also be found behind the scenes changing costumes for *Cabaret* and *BEEHIVE*. During the summer she is an instructor with the Palace Summer Teen program. Enjoy the show.



Kyle Evans (John Barrymore) is proud to be in this amazing cast! Kyle directed the Palace's productions of *The Sunshine Boys*, and the 2010 Gala, *Puttin' it Together*, and served as Musical Director for *Big River* and the 2011 Gala. He appeared on stage in *Cabaret*, *Man of La Mancha*, *1776*, *Best Little Whorehouse*, and more. He performed as harpist in *A Little Night Music* and *The Fantasticks*. For Sam Bass Theatre, Kyle directed productions of *Arcadia*, *Art*, and *The Importance of Being Earnest* (B. Iden Payne awards for Director and Production of a Comedy.) For NxNW Theater Kyle directed its production of *The Shadow Box*, and was Musical Director of the award winning *I Love You, You're Perfect, Now Change*.

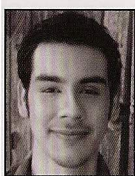


Samantha Ireland (Deirdre) is proud to be a part of this amazing ensemble in her debut at the Palace. A native Austinite, Samantha graduated with a BFA in Theatre Performance from Columbus State University in Columbus, Georgia. She received three Irene Ryan Acting Nominations from the Kennedy Center American College Theatre Festival and originated various roles in plays from winners of the Larry Corse International Play Festival. Samantha's independent film credits include lead and supporting roles in *Melancholy Baby*, *Chosen*, *Intervention (a mockumentary)* and *Once You Leave*, a web series where she also serves as a producer. Samantha is a voice actor with Rooster Teeth Productions in their popular web series, *Red Vs. Blue*, for the character C.T. Samantha resides in Georgetown with her husband Dan.

Company Bios, continued



Suzanne Orzech (Felicia) is thrilled to be back on the Palace stage with such a fantastic cast! She recently played Jolene Oaks in *Dirty Rotten Scoundrels* at both the Palace and State Theaters. Other Palace credits include the Stepmother in *Rodgers and Hammerstein's Cinderella*, and various Ensemble roles in both *EVITA* and *Joseph and the Amazing...* While living and studying in France, Suzanne had the opportunity to play Roxie Hart in *Chicago* under the direction of Bruno Alain. Favorite roles include Minnie Faye in *Hello, Dolly!*, Bet in *Oliver!*, and Mae Peterson in *Bye Bye, Birdie*. Suzanne is a Spanish and French teacher at Cedar Ridge High School in Round Rock (GO RAIDERS!). Suzanne thanks her family for their continuous love and support!



Ismael Soto III (Andrew) is pleased to be a part of this amazing group of actors. Palace Credits include, Young Ebenezer in *A Christmas Carol the Musical*, Ensemble in *Dirty Rotten Scoundrels*, Sam Hendrix in *Wait Until Dark* as well as Ernst Ludwig in *Cabaret*. Previous high school and community projects include John Proctor in *Arthur Millers The Crucible*, Ed Carmichael in *You Can't Take it With You*, Cal Jarrett in *Ordinary People*, George Antrobus in *Thornton Wilders The Skin of our Teeth* performed at the Church Hill Theatre in Edinburgh Scotland at the Edinburgh Fringe Festival. He thanks God and his loving family for their unending support as well as the production team for this wonderful opportunity, and Toby Minor for his work on fight choreography.

Production Team Bios

Mary Ellen Butler (Artistic Director) has been Artistic Director for the Palace since mid-2004; as Artistic Director, she produces the season and directs many shows, the most recent being *Wait Until Dark*. She also directed the hit musical *Dirty Rotten Scoundrels* at the Palace and recently remounted the show at Stateside at the Paramount in Austin to great critical acclaim. She directed *Cinderella*, *The Enchanted*, as well as *Joseph and the Amazing Technicolor Dreamcoat* and *Annie*, both from the 2009-10 Season. Mary Ellen is also in charge of the year-round Theatrical Workshops for Youth.

Ron Watson (Associate Artistic Director) has been a director for the Palace since 1999. His most recent production as director was *The Wizard of Oz*, preceded by *Cabaret*. Favorite productions include *Man of La Mancha*, *Grease*, *Nunsense*, *A Funny Thing Happened...*, *1776*, *A Few Good Men*, and *Noises Off*. Ron was Technical Director for the Palace for four seasons before becoming Associate Artistic Director in 2009-10. Ron holds a BFA in Directing from SWTSU (now Texas State).

Production Team Bios, continued

David Sray (Director) is happy to bring another straight play to Palace and this time, put some people in tights! David's previous acting credits include Carl-Magnus in *A Little Night Music*, Edward Rutledge in *1776*, Curly in *Okla-homa!*, and a B. Iden Payne Outstanding Cast Award winning performance in *I Love You, You're Perfect, Now Change*. David's Palace directing credits include *Big River: The Adventures of Huckleberry Finn*, *Daddy's Dyin, Who's Got the Will?*, *A Christmas Story*, and *Cheaper by the Dozen*. Many thanks to this outstanding cast and crew of Hamlet haters and to Marsha, Jackson, and Wileyfish.

Jessie Drollette (Stage Manager) is in her sixth season with the Palace and couldn't be happier. This is such a remarkable place to call home, and every show just gets better. The community and the amazing talent that are drawn to our jewel of a theatre are just astounding! Jessie holds a Bachelors of Fine Arts with an emphasis in Stage Management. Show credits include *1776*, *The Waiting Room*, *A Little Night Music*, *A Few Good Men*, *Man of La Mancha*, *I love you, your perfect, now change*, *Peter Pan*, *The King and I*, and *Last Night of Ballyhoo*, to name a few. Jessie would like to thank an amazing cast and crew for this fun ride, hopes you enjoy the show as much as she does!

Kristie Loescher (Asst. Stage Manager) is thrilled to be backstage working with this marvelous cast and stellar crew! She has been involved in a number of Palace productions both onstage and backstage including *Cinderella* (chorus), *Wizard of Oz* (fly rail operator), and *Sunshine Boys* (Asst Stage Manager) from last season. When not at the Palace, Kristie is a management professor at UT-Austin. Special thanks to my ASM mentors Rich Simms and Matt Durkee as well as daughter Claire and husband Frank for their continuous support and encouragement.

Tamar Madrigal (Costumer) is thrilled to be on her sixth production at the Palace. She began last season and has worked on costumes and/or props for *Cabaret*, *Wait Until Dark*, *Wizard of Oz*, the Children's Summer Workshops and this season's *Beehive* and *A Christmas Carol*. She received her BA in Theatre from Texas Tech University and she would like to thank everyone at the Palace as well as the love of her life, Brandon, for always encouraging her to follow happiness.

