

# The Emily Ann Theatre & Gardens



May 28-June 20, 2010  
FRI-SAT-SUN....8PM

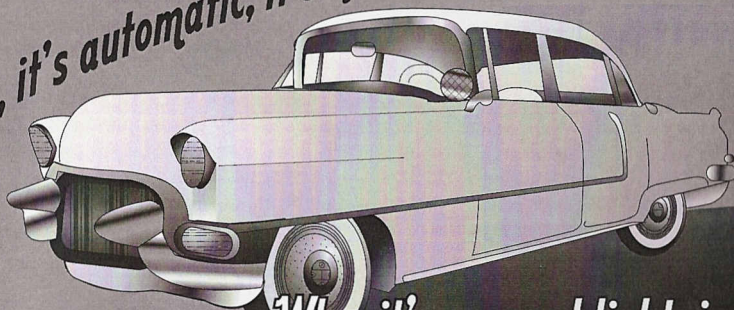
*Many Thanks to our  
Sponsors!*

**BROADWAY BANK**  
**KING FEED**  
**GARDEN & HARDWARE**  
**KISS THE COOK**  
**CONLEY CAR WASH**

Book, Music & Lyrics by  
**JIM JACOBS and WARREN CASEY**

Directed by  
**Bridget Farias**  
Music Director  
**Amy Cartee-Cox**  
Choreographer  
**Melissa Moncus**

*Why, it's automatic, it's systematic, it's hydromatic;*



*"Why, it's greased lightning!"*

# Grease PRODUCTION TEAM

Director	Bridget Farias
Stage Manager	Angelica Manez
Assistant Director	Dana Cowden
Backstage Manager	
Choreographer	Melissa May-Moncus
Music Director	Amy Cartee-Cox
Set Design/Set Painting	Stephen Moncus
Assistant Scene Painter	Pat Galvin
Set Construction	Duane Mueller
Costumes	Rachel Brown, Valerie Mueller, Stacy Davis
Audio Technician / Sound Board Operator	Brian Daugherty
Light Design	Kevin De Vos
Master Electrician	Chris McKnight
Spotlight Operators	Rob Novak, Cyrus Mallison
Props Mistress	JoNell Erck
Make-up/Hair	Devyn Ray

## Director's Special Thanks

- **David Jolander** (for the amazing car and authentic 1950's automotive supplies)
- **Duane Mueller** (for the crazy awesome set construction you see before you)
- **Steve Moncus** (for the design and painting of the crazy awesome set)
- **Valerie Mueller, Stacy Davis, Rachel Brown** (for the absolutely beautiful costumes)
- **Rita Kelso/Scottish Rite Children's Theatre** (for donating many of the beautiful 50's costumes)
- **Melissa May-Moncus** (for the truly wonderful and unique choreography)
- **Pat Galvin, John Dearington, Juli Dearington, D.Heath Thompson, Bobby DiPasquale, Mr. Peralez, Mikayla McIntyre, Reed Neal, Wendy McIntyre** (for assisting with painting and construction)
- **Angelica Manez** (without your professional stage management I would have lost my mind)
- **Amy Cartee-Cox** (for the lovely and stress-free music direction and assistance)
- **Kevin De Vos, Brian Daugherty, Chris McKnight** (for the wonderful lights and sound...thank you!)
- **Entire CAST and CREW of Grease:** you all own a portion of my heart!
- **Dan Stephens and First Baptist Church of Wimberley**
- **Wimberley Community Fund** for donating 12 wireless microphones
- **Wimberley Community Civic Club** for enabling a spot light repair
- **EmilyAnn Theatre Staff** (Ann, Norm, Laura, Bettie, Momz- I love you all so much! Thanks for all yo do!)
- **Phil and Joe-** Thank you for the beautiful new dressing rooms! And for all you do too!

# Grease CAST

Danny Zuko	Braden Williams
Sandy Dumbrowski	Mikayla McIntyre
Betty Rizzo	Juli Dearington
Kenickie	Bobby DiPasquale
Marty	Lauren Foreman
Sonny LaTierri	D. Heath Thompson
Jan	Melissa May-Moncus
Roger	Derek Vandt
Frenchy	Laura Ray
Doody	Reed Neal
Patty Simcox	Caitlyn Iliff
Eugene Florczyk	Bronson Lassetter
Miss Lynch	Beverly Galante
Blanche	Jerilyn Iliff
Cha-Cha DeGregorio/Ensemble	Sarah Villeareal
Vince Fontaine	John Dearington
Johnny Casino	Perry Redden
Teen Angel	Andrew Cannata
The Distractions/Ensemble	Amy Cartee-Cox, Jennifer Peralez, Lindsay Burnett, Laura Cannon
Teacher/Ensemble	Gene Burns
Ensemble	Faith Stephens, Robyn Derr, Samantha Brittain, Taylor McIntyre, Lillian Taylor Heyen, Brittany Burns, Leah Pullin, Mark Cruz, Colin Iliff, Dillon Lee



# Synopsis of Scenes and Musical Numbers

## ACT ONE

### Scene 1: REUNION

"Alma Mater" .....Entire Company  
 "Grease" .....Entire Company  
 "Alma Mater" Parody ..... Kenickie, Doody, Roger, Sonny

### Scene 2: LUNCH TIME

"Summer Nights" ..... Sandy and Danny,  
 Pink Ladies, Greasers, Ensemble  
 "Those Magic Changes" ..... Doody

### Scene 3: PAJAMA PARTY

"Freddy, My Love" ..... Marty and Pink Ladies

### Scene 4: Automotive Repair Shop

"Greased Lightnin'" ..... Danny, Kenickie, Greasers

### Scene 5: SCHOOLYARD

"Rydell Fight Song" ..... Sandy and Patty

### Scene 6: PARK

"Mooning" ..... Roger and Jan  
 "Look at Me, I'm Sandra Dee" ..... Rizzo  
 "Hopelessly Devoted to You" ..... Sandy

## ACT TWO

### Scene 1: PROM NIGHT

"Shakin' at the High School Hop" .....Entire Company  
 "It's Raining on Prom Night" ..... Sandy and Peach E. Keen  
 "Sincerely" ..... Peach E. Keen and Distractions  
 Accompaniment arranged by Amy Cartee-Cox  
 "Born to Hand Jive" ..... Johnny Casino and The Distractions

### Scene 2: FRONT OF BURGER PALACE

"Beauty School Dropout" .....Teen Angel and Angel Ensemble

### Scene 3: DRIVE IN MOVIE

"Sandy" ..... Danny Zuko

### Scene 4: JAN'S BASEMENT PARTY

"There are Worse Things I Could Do" ..... Rizzo  
 "Look at Me, I'm Sandra Dee" Reprise.....Sandy  
 Accompaniment arranged by Amy Cartee-Cox

### Scene 5: FRONT OF BURGER PALACE

"You're the One that I Want" ..... Sandy and Danny  
 Pink Ladies and Greasers

## FINALE

"We Go Together" .....Entire Company

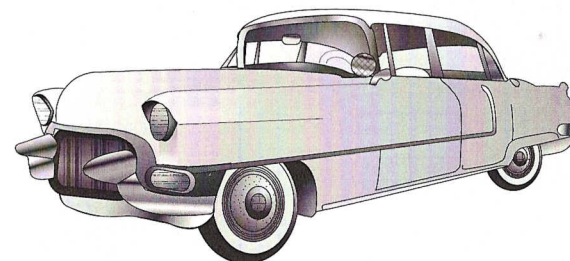
## Director's Notes

### Bridget Farias (DIRECTOR)



holds a BFA in Acting and a BFA in Directing from Texas State University, where she also served as President of APO (Theatre Honor Fraternity) and was awarded the Larry Hovis Acting Scholarship and Leadership Award, as well as winning a Ramsey Award for Best Actress. Since graduating, Bridget has become the Artistic Director of the EmilyAnn Theatre, core company member of Austin theatres: Scottish Rite Children's Theatre, City Theatre, TheSearchParty, and Artistic Director of Full Circle Theatre Company. She is a B. Iden Payne Awards Committee Member, and has acted in and directed many professional shows in Austin and the surrounding areas. Professional acting credits include:

Lady Macbeth, Kate (*Shakespeare's Husbands & Wives*), Jill/Martha (*The Heidi Chronicles*), Wendy (*Peter Pan*), Maid Marian (*Robin Hood*), Sandman/Sarah (*Dream.One*), Hippolyta (*A Midsummer Night's Dream*). Her directing credits include: *Twelfth Night* (Blue Theatre), *Neville's Island*, *The Lion, the Witch, and the Wardrobe* (City Theatre), *The Little Mermaid* (Scottish Rite Children's Theatre), *Julius Caesar* (EmilyAnn Theatre), *Elephant Man* (EmilyAnn), *A Comedy of Errors* and *The Winter's Tale* for Shakespeare Under the Stars. She will be directing *Romeo and Juliet* for SUS and will be playing Princess Jasmine in *Aladdin* at the Scottish Rite Children's Theatre this summer, as well as playing Queen Elizabeth in *Richard III* at the Blue Theatre later this year. She studied abroad with the Royal Shakespeare Company for two summers in Stratford, ENG. She is extremely thankful to this astounding production team, crew, and cast of Grease! They are amazing and talented people that she looks forward to working with again. And also wishes to thank her handsome and amazingly talented husband, Judd, and her beautiful and intelligent mother, Dayna, for their unwavering support and love. I LOVE YOU! **She dedicates this production to her Uncle Rocky, whose contagious laugh and heart of gold will forever be treasured to everyone that had the honor and privilege of knowing him.**





# GREASE CAST BIOS



**SAMANTHA BRITTAIN**

(ENSEMBLE) has been in several plays, most recently *The Grapes of Wrath* and *Alice in Wonderland*. In addition to acting, Samantha is a Standard with

the Wimberley Junior High Dance team. This is Samantha's first engagement with the EmilyAnn Theatre and is looking forward to her days on Broadway when she can look back on these great experiences.



**RACHEL BROWN**

(COSTUMER) graduated from Texas State University in December 2008 with a BFA in Theatre Design & Technology, degree emphasis on costuming.

While at Texas State, she worked on several productions including *Going After Cacciato*, *Much Ado about Nothing*, and *The Importance of Being Earnest*. Her professional costuming experience includes the Zilker Park Summer Musical in 2007 and the Illinois Shakespeare Festival in 2008. Rachel has also been highly active in the summer community plays in her hometown of Buda for the past several years. She would like to thank her wonderful director, the awesome cast and crew, her supportive family, & her loving fiancée, Kevin.



**LINDSEY BURNETT**

(DISTRACTION/ENSEMBLE) has enjoyed being a part of *Grease*. This is her first musical performance at EmilyAnn Theatre. She is thankful for the friendships she

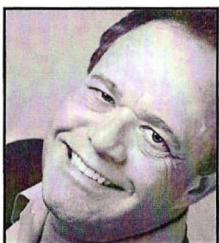
has made with the cast, and appreciates her family and friends for always supporting her.



**BRITTANY BURNS**

(ENSEMBLE) has been a professional actress since the age of two. She has had a wide range of experience in the world of film making, especially for the young age of eighteen years old.

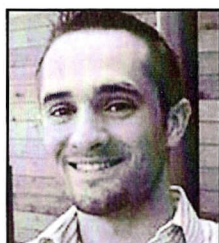
She is proud to say that her first experience in Theatre is the musical *Grease!* Brittany's representation is The Atherton Group.



**GENE BURNS**

(ENSEMBLE) hasn't stepped foot on the stage since his leads in High School plays—won't say how long ago that was, but got his break as he was fulfilling the role of guardian-tag-along

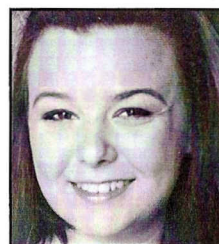
to a Century 21 audition for his five-year-old daughter Brittany; Gene was asked to audition himself and landed the principal role. Gene has played roles in feature films (*Friday Night Lights*, *Newton Boys*, *Desdemona*) and the recently wrapped *2:22*) as well as a whole host of national commercials and print ads. After spending fourteen years as a professional film/commercial actor, Gene is stepping onto the stage to rekindle his love of live theatre.



**ANDREW CANNATA**

(TEEN ANGEL) has been performing for local audiences for the last five years, having won a few awards including a B. Iden Payne "Best Actor in a Musical" award for his portrayal of Sid Sorokin

in *Pajama Game* at the Mary Moody Northern Theatre. Amongst his favorite roles: Jamie in *Last Five Years*, Benjy Stone in *My Favorite Year* and Chip Tolentino in Zachary Scott Theatre's production of *25th Annual Putnam County Spelling Bee*. He would like to thank his friends and family, especially his parents. They have always been his foundation and his biggest supporters.



**LAURA CANNON**

(ENSEMBLE) is a recent graduate from Texas State with a BFA in Theatre. She served as president of Alpha Psi Omega, the Theatrical Honor Fraternity, and spent the summer of 2008

studying in Stratford—upon—Avon, England with the Royal Shakespeare Company. Some past productions include the *1940s Radio Hour*, *Style of the Eye*, *Lend Me a Tenor*, *Rogues* and *Renegades* the 24 hour play festival, the original production of *In the Company of Sinners and Saints* at Texas State University and the short film *Perchance to Dream*. Thanks and love to her family who always supports her.



**AMY CARTEE-COX**

(MUSIC DIRECTOR/LEAD DISTRACTION) Honing her skills in Musical Direction; as Vocals Director & featured vocalist in the EmilyAnn's 2008 production of *The Gospel Accordin'*

to Texas, Music Director for the EmilyAnn's 2009 show, *60's Sensations*, where she was also a featured singer; Amy has stepped it up a notch, now arranging harmonies and piano accompaniment for *Grease*, and on stage as Peach E. Keen, the lead Distraction. Look for future performances by The Distractions, founded by she and Perry Redden in late 2009. Other musical ventures include 2005 Austin Chronicle Music Award winning a cappella group Texas Hot Flash, and duo Just DUet, which performs routinely in the area. "It is a pleasure to work with such a talented cast and crew—what a team! Enjoy the show!"

**DANA COWDEN**

(ASSISTANT DIRECTOR/BACKSTAGE MANAGER) has recently branched out into film having directed a short film for entry into film festivals across the US. She was also Assistant Director for the EmilyAnn production *Elephant Man*. Dana Assistant Stage Manager the Texas State production of *Big Love* and assisted with props and costumes for *In the Company of Sinners and Saints*. Dana's acting credits include Halie in *Buried Child* as well as many rolls in university and community theatre productions. Dana is thrilled to work with such a talented director, cast, and crew on this show.

**MARCUS CRUZ**

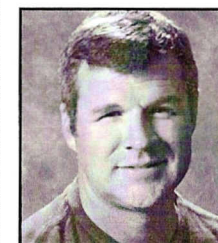
(ENSEMBLE) is a student at San Marcos High School, and is enrolled in the SMHS Theater Arts program. His acting credits include playing Asher in *Joseph & the Amazing Technicolor Dreamcoat*, Messenger in *Sophocles' Antigone* for UIL One-Act Play, and George Spelvin in *The Actor's Nightmare*.



**STACY DAVIS**

(COSTUMER) has a BFA in Costume Design & Construction. Her past productions include *Rocky Horror Picture Show* & *Backyard Story* among others at Texas State

University. Regional productions include *The Lion*, *The Witch & the Wardrobe* at The City Theatre & *The Elephant Man* at The EmilyAnn Theatre. She would like to thank her parents & her loving boyfriend for all of their amazing support.



**JOHN DEARRINGTON**

(VINCE FONTAINE) can be considered a veteran now as he makes his fifth stage appearance. He has been seen in WPs' production of *Man of LaMancha*

(Captain of the Guards), EmilyAnn Theatre's *Gospel Accordin' To Texas* (Jimmy Alvin) and *My Fair Lady*. He will be tackling the role of Adam in *Seven Brides for Seven Brothers* later this fall for the Wimberley Players. He has had a great time making new friends, reuniting with old ones and spending this time with his busy wife, Juli... where sometimes this is the only place he gets to see her!



**JULI DEARRINGTON**

(BETTY RIZZO) returns to the EmilyAnn Theatre after the Wimberley Player's *1940's Radio Hour* (Ann Collier). Her favorite role to date, however, has been EAT's *My Fair Lady* as Eliza Doolittle. Other notable shows include WP's *Stop the World, I Want to Get Off* (Ginnie Romain), the EmilyAnn Theatre's historically successful *Gospel Accordin'*

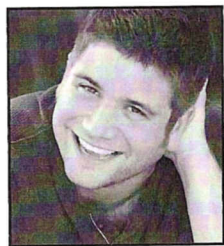


To *Texas* (Governor's Secretary, Betty), *EAT's Fiddler on the Roof* (Tzeitel), WP's *Man of La Mancha* (Antonia), and Marian in *The Music Man*. When not in a stage production, Juli sings professionally with the 20-piece swing band, The Sentimental Journey Orchestra, and with her own trio, Destination. She would like to thank her wonderful husband, John, for being so supportive of her so that she may participate in one of her passions... theatre!



**KEVIN DE VOS**  
(LIGHTING DESIGNER) graduated from Texas State University in May 2007 with a BFA in Theatre Design & Technology, degree emphasis

on lighting. While at Texas State, he worked on several productions including *The Rocky Horror Show*, *Move Over Mrs. Markham*, and *The Most Fabulous Story Ever Told*. His professional lighting experience includes the Texas Shakespeare Festival in 2007 and the Illinois Shakespeare Festival in 2008. Kevin has also been highly active in the summer community plays in Buda for the past several years. He would like to thank his supportive fiancée, Rachel, for all that she does.



**BOBBY DIPASQUALE**  
(KENICKIE) is an accomplished actor, improviser, writer, and comedian. He's appeared on screen on Spike TV, the CW Network, Fox Sports Net, and

in the sitcom pilot *Misery Loves Company*; on stage in *Damn Yankees*, *Bye Bye Birdie*, *Fools*, and countless other shows; is a proud member of ComedySportz Austin Improv and the DKON Sketch Comedy troupe; has worked as a national touring stand-up comedian; and is a co-founder of The Austin Roasters Club. Bobby would like to thank his family, his CSz family, his *Grease* family, and all his friends... who he considers family that have worked with or supported him in over 15 years of performance. It's because of you that Bobby is more than a pretty face... though his face is really, stunning.



**LAUREN FORMAN**  
(MARTY) graduated with a BFA in Music Theater from Texas State University. Her first acting gig was at the tender age of four and she has been in love with the stage ever since. Lauren has been

lucky enough to tour with several different choirs and touring groups to amazing lands such as England, Austria, The Czech Republic, Germany, Mexico, and Prague. Some of Lauren's favorite roles have included; Kelly Kapowski in *Staged by the Bell*, Petra in *A Little Night Music*, Wendy in *Peter Pan*, and Crystal in *Little Shop of Horrors*. She is grateful to her family, Russell, her 3 dogs, 3 cats, and garden for their patience and support.



**BEVERLY GALANTE**  
(MISS LYNCH) has performed at each of the EmilyAnn Theatre's summer musical productions since 2005. She also appeared in the musical *1776* at the opening of the

new Wimberley Players Theatre in 2006. As a charter member of the Second Act Troupe she performed in several of their one act plays. Most recently she performed in last summer's musical *My Fair Lady*. She is delighted to be a part of this very talented cast.



**CAITLIN ILIFF**  
(PATTY SIMCOX) is a talented 13 year old young lady, whose acting and singing credits include various featured roles in the *Music Man*, *Wizard of Oz*, and *Guys and Dolls* through the

Wimberley Playhouse Summer Music Theater Camp, and performed in the *60's Sensations* at the EmilyAnn. Caitlin is also a member of the Hill Country Youth Chorus through Texas State University. Caitlin loves to sing, dance and experiment with Julia Child's cookbooks.



**COLIN ILIFF**  
(ENSEMBLE) is a charming young man who loves the stage more than life itself. He is a proud thespian who has been lucky enough to be a part of multiple theatrical productions

at the Lone Star Theater, The Wimberley Playhouse, and the EmilyAnn. His most recent exploit was his role as Horatio in *Hamlet*, the Lone Star Theater's UIL contest play, which competed at the State level at Bass Concert Hall in Austin. He will be a Senior at Wimberley High School this coming fall (oh how time flies...)



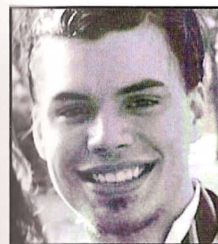
**JERILYN ILIFF**  
(BLANCHE) is proud to be back at the EmilyAnn Theater sharing the stage with her three talented children, Colin, Caitlin and Callie. Jerilyn's recent stage experience includes

the Wimberley Players production of *Marvin's Room*, and performing in the *60's Sensations* at the EmilyAnn. In her real life, Jerilyn plays a crazy mother who works as a speech pathologist at a post acute brain injury facility.

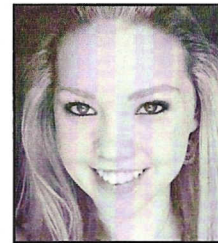


**BRONSON LASSETTER**  
(EUGENE) has been in over 20 productions and has loved every second of them. Some of his favorite roles include Lazer Wolfe in *Fiddler on the Roof Jr.*, Marcellus in

*Hamlet*, and Egeus in *Midsummer Nights Dream*. He enjoys playing his guitar and singing as well as playing tennis in his spare time. He hopes you enjoy the show.



**DILLON LEE**  
(ENSEMBLE) is a graduating senior this year and is so excited to be a part of this amazing production of *Grease* at the EmilyAnn Theatre.



**MIKAYLA MCINTYRE**  
(SANDY DUMBROWSKI) has been on the stage ever since she can remember! She has been involved in numerous musicals including *The*

*Music Man*, *Joseph and the Amazing Technicolor Dreamcoat*, *Oklahoma!*, and many others. She is a freshman at Dripping Springs High School where she is involved in theatre and in choir. She also enjoys hanging out with friends, smiling, laughing, and having fun! She would like to say thank you to this amazing cast and crew for making this one of her best experiences yet!



**TAYLOR MCINTYRE**  
(ENSEMBLE) is an active 6th grader at Dripping Springs Middle School. She loves being on the stage and has been in many shows including *Joseph and The*

*Amazing, Technicolor Dreamcoat*, and *The Gospel Accordin' to Texas*. She loves the people she meets through theatre and the new experiences and fun times! She is also involved in basketball and choir, so she stays pretty busy! She would like to say thanks to all the cast and crew for the fun, & a special thanks to Kenickie for the support.

**ANGELICA MANEZ**  
(PRODUCTION STAGE MANAGER) received her BA in Theatre Art Administration from St. Edward's University. Some of her stage management credits include *John & Jen* (Penfold), *Evil Dead the Musical* (DrMir), *Sweeney Todd and Little Shop of Horrors* (SSA) *The Music Man* (Zilker Theatre Productions), *Robin Hood*, *A Christmas Carol*, *Snow White*, and *Cinderella* (SRCT), *Cyrano de Bergerac* and *Death and The King's Horseman* (MMNT), and Opening Gala of The Long Center. Angelica would like to thank her friends and family especially Ronis and Devyn for always being there.



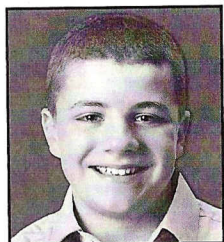
**MELISSA MAY-MONCUS**  
(JAN / CHOREOGRAPHER) has been performing since the age of 4, choreographed her first full-length musical at the age of 14 and began



directing musicals, plays and ballets at 20. Favorite roles played include Anita in *West Side Story*, Nancy in *Oliver!* and Sally Bowles in *Cabaret*. Favorite choreographic credits include a central Florida production of *Big River*, *The Musical Story of Huckleberry Finn* starring Harry Birney (who played Jim on Broadway), *Chicago* and *The Rocky Horror Picture Show* on the Texas State University mainstage. She is proud to be working in *Grease* with such a fine cast and production crew. Thanks Bridget!

#### STEPHEN MONCUS

(SET DESIGNER) is a retired art teacher, fine artist, illustrator and scenic designer. Among his listing of set designs are *Nut Cracker*, *Midsummer Night's Dream* and a 1998 production of *Grease* for the PAWS performing arts school in Kerrville, *West Side Story* at Zilker Park in Austin, and *Brigadoon*, *Kiss Me Kate* and *High School Musical* at the Point Theatre in Ingram. He designed the original set for *Star of the Hills* here at the EmilyAnn.



#### REED NEAL

(DOODY) is a veteran of theatre in the Wimberley area with credits including the Wimberley Player's *1940's Radio Hour*, *Inspecting Carol*, *Marvin's Room*, and *Stop the World*

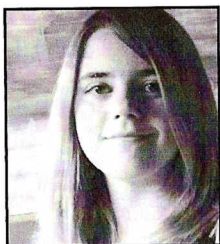
*I Want to Get Off*. He was last seen on the EmilyAnn stage in last year's *60's Sensations*. He has worked on a total of 15 shows in the Wimberley area. Reed is currently rehearsing for *Seven Brides for Seven Brothers* at the Wimberley Players which will take place in September. He'd like to thank his parents for taking him to rehearsals for three different shows (going on at the same time!).



#### JENNIFER PERALEZ

(DISTRACTION/ENSEMBLE) holds a BS in Interdisciplinary Studies from Texas State University. She was a music minor at Sam Houston State University and has

sung in prestigious choirs such as the Houston Symphony Chorus and the Austin Chorale. She is originally from Houston, Texas but has resided in Wimberley for the past six years with her husband and their now three year old daughter, Ava.



#### LEAH PULLIN

(ENSEMBLE) is a high school sophomore at Katherine Anne Porter School. She has been acting since fourth grade and has done many plays ranging from *Alice in Wonderland* to *Holes*

to *My Fair Lady* to (of course) *Grease*. She is very excited to be included in this project and hopes to work with the EmilyAnn Theatre on many more projects.

#### DEVYN RAY

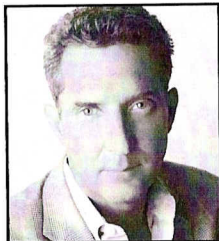
(MAKE-UP/HAIR) is a Sophomore at St. Edwards University specializing in performance. She has however been working in Make-up since she was eight. Her last work was seen in *Artstrada* magazine, her other jobs have included *Evil Dead the Musical* and an album for the band Powderburn. Along with photography and film she also teaches an annual special effects make-up course in Leander ISD. She would like to thank Angelica for the rides, Bridget for the opportunity and Gambit (for the fleas).



#### LAURA RAY

(FRENCH) is happy to be performing in her third show at the EmilyAnn Theatre. Laura received her B.A. in Theatre Arts from St. Edward's University. Some of her recent acting

credits include: Agnes in *Agnes of God* (City Theatre Company), Pin Head 1 in *The Elephant Man* (EmilyAnn Theatre), and Ariel in *The Little Mermaid* (Scottish Rite Children's Theatre). Laura is very grateful to be able to work with such a talented cast, crew & director (Bridget rocks!) on this awesome production. She would like to say a special thank you to her parents, Robert & Barbara, as well as Brandon, Lisa & Heath for their continual love & support.



#### PERRY REDDEN

(JOHNNY CASINO) is thrilled to be returning to the EmilyAnn Theatre Stage. A veteran of many performances, Perry's last performance was Reverend Pete in *Virtual Devotion* at the

Wimberley Players. Other notable productions

includes *60's Sensation* which he portrayed Elvis, Johnny Cash, Tommy Smothers, and Geraldine and Jamie in *My Fair Lady*. He grew up in Oklahoma and is a registered member of the Choctaw Indian Nation. Being bitten by the "showbiz bug," he became an in-house musician, singer, and actor with the Magnolia Opera House in Houston. He is the Construction Manager for Thyssen Krupp Elevator.



#### FAITH STEPHENS

(ENSEMBLE) is in 8th grade at St. Stephens's Episcopal School. She has been involved with multiple musicals at church, but just two years ago started to really act. She has been in two of Lee

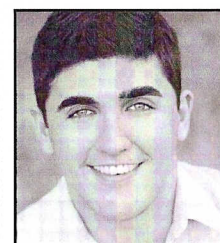
Colee's Theater camps, *Wizard of Oz* and *Guys and Dolls*. She was in Lee Colee's singing group, "The Little Divas" in 7th grade. This is her first musical to act in at the EmilyAnn Theater. She worked backstage in the *60's Sensations* last year and ran spotlight in *My Fair Lady*. She has been in three of Bridget's Drama Classes at St. Stephen's (she just recently did Mime and Kabuki). She is really excited to learn more about the musical theater, but especially make new friends.



#### D. HEATH THOMPSON

(SONNY LATIERRI) has starred in over 9 of the Scottish Rite Children's Theatre's productions, including such roles as; Jack in *Jack and the Beanstalk*, Peter Pan in *Peter Pan*,

Gaston in *Beauty and the Beast*, and Ursula in *The Little Mermaid*. He's written over 8 scripts (Little Red Riding Hood, Peter Pan, Robin Hood, and Sleeping Beauty) and has directed three of them (Little Red Riding Hood, Peter Pan, Robin Hood) for the children's theatre. Other roles include; Detective Baylen in *Glengarry Glen Ross* (City Theatre), Tom in *The Long Now* (Shrewd Productions), Wolfgang in *A Monster Carol*, Man-At-Arms in *He-Man Live*, Peter Quince in *A Midsummer Night's Dream*, Neville in *Neville's Island* (dir: Bridget Farias), Sir Toby in *Twelfth Night* (Rory Gene Productions), Julius Caesar in *Julius Caesar* (EmilyAnn Theatre), and Ross in *The Elephant Man*. (EmilyAnn Theatre). *Grease* is his first musical.



#### DEREK VANDI

(ROGER) was a boy who wanted to be a lot of things when he grew up. Fortunately, his dreams came true. He has played a variety of independent film and stage roles, including

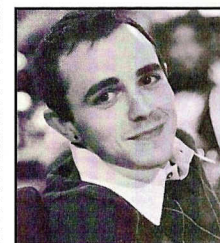
Aslan in *The Lion, the Witch, and the Wardrobe*, Lord John in *The Elephant Man*, and the title role in The Scottish Rite Children's Theatre's production of *Robin Hood*. Derek would like to thank: his parents, Tony and Barbara; his brother, Anthony, and Beth; his best friend, Jacob, and the Cobos family; all of the new people that he has worked with and grown close to in the past year; the hardworking people at his agency, The Atherton Group; and everyone in the audience who is sharing in the fulfillment of his childhood dream.



#### SARAH VILLARREAL

(CHA-CHA DEGREGORIO/ENSEMBLE) is 17 years old attending San Marcos High School as a junior. She loves all forms of art. Sarah has been

performing since she was born, but performing on stage since she was four years old and has been in many community productions since. She has been involved in *The Music Man*, *A Christmas Story*, *The Insanity of Mary Girard*, *Antigone*, and several productions of *Joseph and the Amazing Technicolor Dream Coat*. Sarah has just received her CNA (Certified Nurses Aide) license and would love to continue her career in the medical field as well as pursue her passion for the arts.



#### BRADEN WILLIAMS

(DANNY ZUKO) is thankful to be a part of this production after taking a long hiatus from the stage. After receiving a BFA in Acting from Texas State, where he was awarded

an Irene Ryan nomination for his portrayal of Seymour in *Little Shop of Horrors*, he has gone onto pursue another degree in the field of Nutrition. He hopes to finish both this and a teaching certificate and begin instilling the same passions he has in the young actors of tomorrow.



# EXECUTIVE DIRECTOR

Bill Hasselmeier  
Lamoureux Family  
Wimberley Community Fund

# PRODUCER

Jim & Diane Drew  
Sylvia Furtick  
Annanette Harper  
Nina Koehler  
Daryl Martin  
Mike & Patti Morgan  
Rodger & Marilyn Parker  
Dody Spencer  
Rusty & Catherine Wallace  
Temple Wynne

# MARQUEE

Alan and Donna Colabuono  
Tom Daniel  
Bud & Nancy Fair  
Preston and Sarah Tatum  
Robert and Debbie White

# LEAD

Tom & Susan Ballard  
Rocky & Renee Boschert  
Harvey & Nancy Brelin  
Curtis & Nell Cadenhead  
Lynn & Jamie Carter  
Billie Marie Clyburn  
Wayne Crawford  
DIOSDA  
James and Mary Lou Gwynn  
Martha Knies  
Fred & Velma Lamoureux  
Lila McCall  
Laurie McDonald  
Robert & Sheri Mesch  
Tom & Andi Pessoney  
Patrick Rehmet  
Diane & John Sandlin  
Jim & Tina Stanley  
Mac & Mitzi Stevenson  
Glenn & Laura Tanner  
Ray & Ruth Winder

# ACTOR

Susan & David Agee  
Bev Allen  
John & Sherry Anderson  
Art & Mary Arizpe  
Kirby Attwell  
Peter & Karen Bartell  
Alice Benson  
Bruce & Claire Billingsly  
James & Mary Beth Bond  
Anne Bothwell  
Phyllis Bowcock  
Bertha Cartee  
James & Joan Chisholm  
Charles & Carroll Dolezal  
Dick & Jane Dziezyk  
J.B. & Teresa Emerson  
Marti Eveleigh  
Bob and Mary Fulton  
David Glenn  
Ian & Norma Green  
Morris & Pat Haggerton  
Bill & Shelley Henry  
Roberta Holland  
Sara Holland  
Melissa Howes  
Betty Huebinger  
Richard & Sandra Huth  
M.J. & Sue Iles  
Rodney & Kathy Jones  
Kelly Kilber/Pro-Tech Engineering

Mary King  
Darlene Kukla  
Petesie Lee  
Bruce & Connie Lindsey  
Mac & Robin McCullough  
Jim & Jean McMeans  
G.D. and Patty Meyers  
Turner & Lana Minnegerode  
Jane & Karl Morton  
Mary Nall  
Nancy & Phill Olson  
Sarah Purnell-Smith & Martin Smith  
Fran Ramsey  
Janice Rogers  
Sac-N-Pac Stores, Inc.  
Judy Seaberry & Barbara Knoll  
Jack & Melinda Seib  
Mike & Tracey Sheffield/Wimberley  
Veterinary Clinic  
Wayne Skaggs  
Elizabeth Stillman  
Cindy Stowe  
Peter & Mary Faye Way  
Andrew & Lin Weber  
Anna and Loyal White  
Wimberley Life Care  
Betty Lee Wright  
Mike & Vickie Young

# BUTTERFLY

Kent & Kitsie Acord  
Dave & Sarah Badal  
Richard Barnett  
Andy & Rebecca Cable  
Roxanne Camden  
Ralph & Glenda Dreyer  
John & Carolyn Ellis  
Cliff and Helen Gaston  
Carol Malone  
Hans and Linda Mueller  
Barbara Smith  
Bettie Smith  
James & Dorothy Taylor  
Jim & Sandy Thomas  
Jay & Laura Trcka/Agility Semi  
Crow and Meta Wilson  
Sam & Linda Young

# CATERPILLAR

Steve & Sharon Amos  
Beta Sigma Phi Sorority  
Ron & Judy Bippert  
Jack & Jo Bourke  
David & Debbie Boxley  
Bill & Kathleen Cline  
Anthony & Janelle Cozentino  
Judith Driscoll  
Bill & Elaine Dupre  
Emil and Ann Dzuik  
Linda & James Hamann  
Sherry Havens  
Neil & Pat Hector  
Hill Country Unit/Herb Society of  
America  
Phoebe Jane Horning  
Butch & Donna Johnson  
Butch and Donna Johnson  
Dorothy Kerbow  
Betsy & Russ Lambert  
Linda Lang  
Lola & Gary Latson  
Ann & Carey Lindsay  
Madge Liscomb  
Roy and Nancy Lynch  
Jackie Maloy & Phil Stribling  
Dorothy Martin  
Jane McCray

Elizabeth McIlheran  
Mr. and Mrs. J. Robert Melanson  
Grover Mitchell & Laverne Rydell  
Joy Moden  
Dianne & David Reding  
Billie Reece  
Bob & Linda Reed  
Mary K. Riddle  
Archie & Pat Robertson  
JoAnne Ross  
Al & Jean Sander  
Bill & Carol Scheel  
Jean Shand  
Herb Smith & Susan Zimmer-  
man  
Dorothy Vrana  
Myra Weiss  
Ken & Heidi Zeko

# DONORS TO MAJOR PROJECTS

ACE Hardware  
Burdine Johnson Foundation  
Bursiel Family  
Chapel in the Hills  
Coates Charitable Trust  
Keep Wimberley Beautiful  
National Endowment for the Arts  
PSH Foundation  
Sam's Club  
Texas Commission on the Arts  
Veritas Foundation  
Wachovia-Wells Fargo Foundation  
Willingham Foundation  
Wimberley Community Civic Club  
Wimberley Village Store

# IN-KIND PATRONS— BUSINESSES

AAA Mastercare  
ACE Hardware  
A Studio Z  
Cornel's Creations  
DellaMark Web Technologies  
Hired Killers Pest & Lawn  
Jankdesign  
The Plaid Group  
Professional Graffiti  
Progressive Sound  
Wimberley Rentals

# IN-KIND PATRONS— INDIVIDUALS

Amy Bell  
David Belschner  
Mary Helen Brinkley  
Scot Brinkley  
Bursiel Family  
Rick Duggan & Cleve Ragan  
Steve Flocke  
Fred & Marilyn Franz  
Gloria Ibarra  
Mac McCullough  
Lynda Morgan  
Raines St. Claire & Jesse Rodgers

# VILLAGE STORE PATRONS

Jack & Shirley Anderson  
Joyce Collier  
Wayne Crawford  
Susan Culpepper  
Tambra Nelson  
Cleve Ragan  
Linda Rolling  
John & Dorothy Threeton  
Ruby White  
Terry Wicke  
Temple Wynne

# Yes! I want to be an Annual EmilyAnn Patron

# All Patrons Will Receive:

- Program Recognition
- Quarterly E-Newsletter
- EmilyAnn Magnet
- Invitation to Annual Patron Party

# Caterpillar Patron \$35+

# Butterfly Patron \$60+

# Actor Patron \$100+

- 2 Tickets to Theatrical Performances

# Lead Patron \$200+

- 2 Tickets to Theatrical Performances
- Reserved Seating (please call in advance)

# Marquee Patron \$500+

- 4 Tickets to Theatrical Performances
- Reserved Seating (please call in advance)
- VIP Parking

# Producer Patron \$1000+

- 8 Tickets to Theatrical Performances
- Reserved Seating (please call in advance)
- VIP Parking

# Executive Director Patron \$2500+

- 4 Season Passes to Theatrical Performances
- Reserved Seating (please call in advance)
- VIP Parking

Name or Business Name: \_\_\_\_\_

Billing Address: \_\_\_\_\_

Phone#: \_\_\_\_\_ Email: \_\_\_\_\_

Amount of Donation: \$ \_\_\_\_\_

Credit Card information: Name on Card: \_\_\_\_\_

Type of card: \_\_\_\_\_ Expiration Date: \_\_\_\_\_

Account #: \_\_\_\_\_

☐ Please contact me about volunteering at the EmilyAnn.

Send check or credit card info to:

The EmilyAnn Theatre & Gardens  
P.O. Box 801, Wimberley, TX 78676

The EmilyAnn is a 501(c)(3) organization. Donations are tax deductible as allowed by law.



# **EXECUTIVE DIRECTOR**

Bill Hasselmeier  
Lamoureux Family  
Wimberley Community Fund

# **PRODUCER**

Jim & Diane Drew  
Sylvia Furtick  
Annanette Harper  
Nina Koehler  
Daryl Martin  
Mike & Patti Morgan  
Rodger & Marilyn Parker  
Dody Spencer  
Rusty & Catherine Wallace  
Temple Wynne

# **MARQUEE**

Alan and Donna Colabuono  
Tom Daniel  
Bud & Nancy Fair  
Preston and Sarah Tatum  
Robert and Debbie White

# **LEAD**

Tom & Susan Ballard  
Rocky & Renee Boschert  
Harvey & Nancy Brelin  
Curtis & Nell Cadenhead  
Lynn & Jamie Carter  
Billie Marie Clyburn  
Wayne Crawford  
DIOSDA  
James and Mary Lou Gwynn  
Martha Knies  
Fred & Velma Lamoureux  
Lila McCall  
Laurie McDonald  
Robert & Sheri Mesch  
Tom & Andi Pessoney  
Patrick Rehmet  
Diane & John Sandlin  
Jim & Tina Stanley  
Mac & Mitzi Stevenson  
Glenn & Laura Tanner  
Ray & Ruth Winder

# **ACTOR**

Susan & David Agee  
Bev Allen  
John & Sherry Anderson  
Art & Mary Arizpe  
Kirby Attwell  
Peter & Karen Bartell  
Alice Benson  
Bruce & Claire Billingsly  
James & Mary Beth Bond  
Anne Bothwell  
Phyllis Bowcock  
Bertha Cartee  
James & Joan Chisholm  
Charles & Carroll Dolezal  
Dick & Jane Dziezyk  
J.B. & Teresa Emerson  
Marti Eveleigh  
Bob and Mary Fulton  
David Glenn  
Ian & Norma Green  
Morris & Pat Haggerton  
Bill & Shelley Henry  
Roberta Holland  
Sara Holland  
Melissa Howes  
Betty Huebinger  
Richard & Sandra Huth  
M.J. & Sue Iles  
Rodney & Kathy Jones  
Kelly Kilber/Pro-Tech Engineering

Mary King  
Darlene Kukla  
Petesie Lee  
Bruce & Connie Lindsey  
Mac & Robin McCullough  
Jim & Jean McMeans  
G.D. and Patty Meyers  
Turner & Lana Minnegerode  
Jane & Karl Morton  
Mary Nall  
Nancy & Phill Olson  
Sarah Purnell-Smith & Martin Smith  
Fran Ramsey  
Janice Rogers  
Sac-N-Pac Stores, Inc.  
Judy Seaberry & Barbara Knoll  
Jack & Melinda Seib  
Mike & Tracey Sheffield/Wimberley  
Veterinary Clinic  
Wayne Skaggs  
Elizabeth Stillman  
Cindy Stowe  
Peter & Mary Faye Way  
Andrew & Lin Weber  
Anna and Loyal White  
Wimberley Life Care  
Betty Lee Wright  
Mike & Vickie Young

# **BUTTERFLY**

Kent & Kitsie Acord  
Dave & Sarah Badal  
Richard Barnett  
Andy & Rebecca Cable  
Roxanne Camden  
Ralph & Glenda Dreyer  
John & Carolyn Ellis  
Cliff and Helen Gaston  
Carol Malone  
Hans and Linda Mueller  
Barbara Smith  
Bettie Smith  
James & Dorothy Taylor  
Jim & Sandy Thomas  
Jay & Laura Trcka/Agility Semi  
Crow and Meta Wilson  
Sam & Linda Young

# **CATERPILLAR**

Steve & Sharon Amos  
Beta Sigma Phi Sorority  
Ron & Judy Bippert  
Jack & Jo Bourke  
David & Debbie Boxley  
Bill & Kathleen Cline  
Anthony & Janelle Cozentino  
Judith Driscoll  
Bill & Elaine Dupre  
Emil and Ann Dzuik  
Linda & James Hamann  
Sherry Havens  
Neil & Pat Hector  
Hill Country Unit/Herb Society of  
America  
Phoebe Jane Horning  
Butch & Donna Johnson  
Butch and Donna Johnson  
Dorothy Kerbow  
Betsy & Russ Lambert  
Linda Lang  
Lola & Gary Latson  
Ann & Carey Lindsay  
Madge Liscomb  
Roy and Nancy Lynch  
Jackie Maloy & Phil Stribling  
Dorothy Martin  
Jane McCray

Elizabeth McIlheran  
Mr. and Mrs. J. Robert Melanson  
Grover Mitchell & Laverne Rydell  
Joy Moden  
Dianne & David Reding  
Billie Reece  
Bob & Linda Reed  
Mary K. Riddle  
Archie & Pat Robertson  
JoAnne Ross  
Al & Jean Sander  
Bill & Carol Scheel  
Jean Shand  
Herb Smith & Susan Zimmer-  
man  
Dorothy Vrana  
Myra Weiss  
Ken & Heidi Zeko

# **DONORS TO MAJOR PROJECTS**

ACE Hardware  
Burdine Johnson Foundation  
Bursiel Family  
Chapel in the Hills  
Coates Charitable Trust  
Keep Wimberley Beautiful  
National Endowment for the Arts  
PSH Foundation  
Sam's Club  
Texas Commission on the Arts  
Veritas Foundation  
Wachovia-Wells Fargo Foundation  
Willingham Foundation  
Wimberley Community Civic Club  
Wimberley Village Store

# **IN-KIND PATRONS— BUSINESSES**

AAA Mastercare  
ACE Hardware  
A Studio Z  
Cornel's Creations  
DellaMark Web Technologies  
Hired Killers Pest & Lawn  
Jankedesign  
The Plaid Group  
Professional Graffiti  
Progressive Sound  
Wimberley Rentals

# **IN-KIND PATRONS— INDIVIDUALS**

Amy Bell  
David Belschner  
Mary Helen Brinkley  
Scot Brinkley  
Bursiel Family  
Rick Duggan & Cleve Ragan  
Steve Flocke  
Fred & Marilyn Franz  
Gloria Ibarra  
Mac McCullough  
Lynda Morgan  
Raines St. Claire & Jesse Rodgers

# **VILLAGE STORE PATRONS**

Jack & Shirley Anderson  
Joyce Collier  
Wayne Crawford  
Susan Culpepper  
Tambra Nelson  
Cleve Ragan  
Linda Rolling  
John & Dorothy Threeton  
Ruby White  
Terry White  
Temple Wynne





## 2010 Season Schedule

### **Spring Musical**

#### ***Grease***

*May 28 – June 20, 2010*

*Friday, Saturday & Sunday Nights*

### **Shakespeare Under The Stars**

#### ***Romeo & Juliet***

*July 26 – August 7, 2010*

*Nightly except Sunday*

### **Fall Shakespeare**

#### ***The Taming of the Shrew***

*September 10 – October 2, 2010*

*Friday & Saturday Nights*

### **13th Annual Trail of Lights**

*Nov 27 – Dec 31, 2010*

### **Studio Theatre Show**

#### ***Fools Fall in Love***

*February 4 – 27, 2011*

*Friday & Saturday Nights, Sunday Matinee*

### **Butterfly Festival**

*April 16, 2011 - 10AM-4PM*

[www.emilyann.org](http://www.emilyann.org) • 847-6969