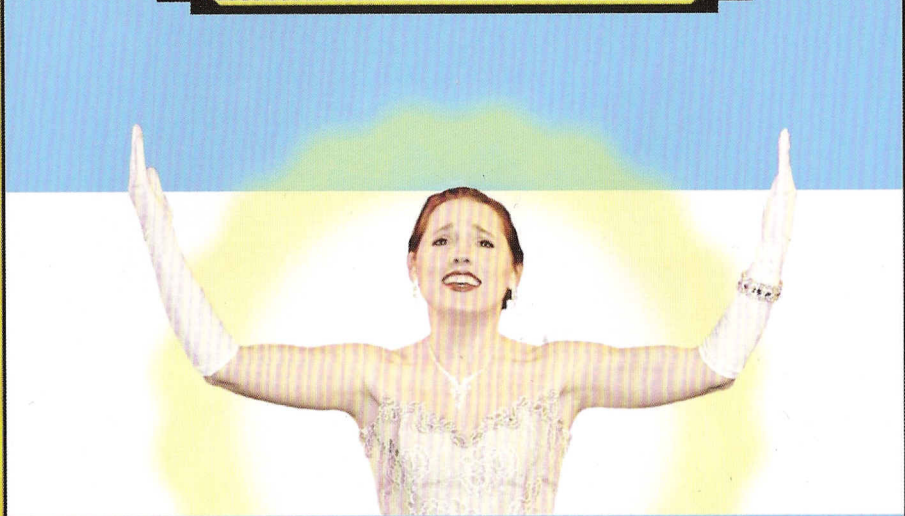


THERE'S NO PLACE LIKE THE PALACE!
THERE'S NO PLACE LIKE THE PALACE!
THERE'S NO PLACE LIKE THE PALACE!



The Palace Theatre
810 South Austin Avenue
In Historic Georgetown, Texas
A 501(c)(3) Non-Profit Organization
(512) 869-7469
www.thegeorgetownpalace.org



EVITA

Lyrics by Tim Rice
Music by Andrew Lloyd Webber

Directed by Clifford Butler

Show Dates:
Weekends Feb. 18 - Mar. 20, 2011

810 S. Austin Ave.
In Historic Georgetown
Just off the Square...
(512) 869-7469

Fridays & Saturdays @ 7:30 pm
Sundays @ 2:00 pm

Ticket Prices:

- \$24 General
- \$22 Seniors (55+)
- \$14 Active Military & Students (13-22)
- \$10 Children (12 & under)

Supported in part by:



Graphic Design by: Richard Simms
Photography by: Elaine Funk

www.thegeorgetownpalace.org

Cast of Characters

- Eva Duarte Perón* Ann Pittman/Sara Burke (U/S)
- Ernesto "Che" Guevara* Steve Williams
- Juan Perón* Jim Lindsay
- Agustin Magaldi* Ed Hillis
- Perón's Mistress* Sara Burke/ Taylor Moessinger
- Young Girl Mourner* Adele Simms
- Woman Mourner* Leslie Gaar
- Doña Juana Ibarguren* Ermine Hailey
- Juan Duarte* Kirk Miller
- Blanca Duarte* Wendy Jo Cox
- Elisa Duarte* Leann Fryer
- Erminda Duarte* Lisa Hyde
- Col. Imbert* Richard Crippen
- Pres. Ramon Castillo* Frank Linenberger
- Gen. Pedro Ramirez* Kirk Miller
- Gen. Arturo Rawson* Leonard Lee
- Gen. Edelmiro Farrell* John Andrew Lopez
- Mario* Kirk Miller/Ismael Soto III
- Marguerita* Sara Burke/Leslie Gaar
- Army Rifle Team* Ed Hillis, Sam Menke, Kirk Miller
..... Nick Orzech, Ismael Soto III
- Men's Ensemble* Richard Crippen, Sean Denton, Ed Hillis
..... Leonard Lee, Frank Linenberger, Cody Lippard, John Andrew Lopez
..... Sam Menke, Kirk Miller, Nick Orzech, Ismael Soto III
- Women's Ensemble* Sara Burke, Wendy Jo Cox, Leann Fryer
..... Leslie Gaar, Ermine Hailey, Martha Hurley, Lisa Hyde
..... Taylor Moessinger, Suzanne Orzech, Trina Sherman, Jennifer Tucker
- Children's Ensemble* Lucy Cotman-Morrison, Grace Denton
..... Ellie Dieringer, Catherine Hipolito, Emma Sabrina Kamen,
..... Amy Sherman, Adele Simms, Emma Simms, Brittany Smith,
..... Sydney Swain, Audra Wilkinson, Paige Wilkinson

EVITA is presented through exclusive arrangement with R&H Theatricals at
229 West 28th Street, New York, NY 10001.

The Palace is a member of the Greater Austin Creative Alliance, the Downtown
Georgetown Association, the Georgetown Chamber of Commerce, and
the League of Historic American Theatres.

FROM THE DIRECTOR'S CHAIR

My first experience with the musical *Evita* was fifteen years ago, when the film was released. A friend of mine loaned me the highlights CD, and I fell in love with the music immediately, despite knowing nothing of the history or the play. When I finally saw the movie, I was absolutely enchanted – but even having seen the complete film, I was left with many questions: Who are all of those generals? Why does that one guy with the moustache keep appearing? Why are Madonna and Antonio Banderas waltzing through a meat locker? (In order: the generals' names are in your program; moustache guy is Eva's brother, later to become Perón's private secretary; and the meat locker references that Argentina was rationing beef despite having been a veritable meat locker for the rest of the world post-WWII.)

The film takes a lot of heat from *Evita* purists, because the movie takes a considerably softer and more forgiving tone than the play. This is an understandable critique – the play is clearer in its objectives, and is more consistent in its cynical tone. However, a clear narrative and tone don't always mesh well with the nuance of real life.

Which is the more accurate depiction of Evita? It is true that she accumulated expensive clothes and jewelry as Argentina's economy slowly collapsed; that she placed a barrel of rotting fish below her enemies' windows; that she arranged for her pet newspaper to never mention the name of a government official that she did not like. But it is also true that her foundation constructed hundreds of schools, day-care centers, and senior citizens' homes, and that she not only obtained the right for women to vote, but completely turned the traditional political role of Argentine women on its head, leading the way for future presidents such as Isabella Perón and the current president, Cristina Kirchner.

Who was Evita? Fifteen years and one production of *Evita* later, I still don't know. I do know that I am nowhere close to the end of my journey with this fascinating period in world history. I hope that, just as the movie did for me over a decade ago, this production encourages you to start (or continue) your own journey.

Enjoy the show,
Clifford Butler

A Very Special Legacy

We would like to thank the following donors for contributing to the
Jay Dowden Memorial Fund.

Sonja & Wally Asendorf
Helen Douglas & Bridge Club
Russel & Ellen Dutkiewicz
Rosalyn Fisher
Randy & Annette Glavan
Lana Hildabridle

Shirley Latham
Dennis & Barbara Staley
Mr. & Mrs. Robert Thomas
Richard & Marrian Welch
Lisa & Andy Welch

Setting: Argentina 1935 to 1952

ACT I—MUSICAL NUMBERS

<i>Requiem for Evita</i>	Ensemble
<i>Oh, What A Circus</i>	Che, Eva and Ensemble
<i>On This Night of a Thousand Stars</i>	Magaldi
<i>Eva and Magaldi/Eva, Beware of the City</i>	Eva, Magaldi
.....	Che and Eva's Family
<i>Buenos Aires</i>	Eva
<i>Goodnight and Thank You</i>	Che, Magaldi, Eva and Lovers
<i>The Art of the Possible</i>	Perón, Eva, President Castillo and Generals
<i>Charity Concert</i>	Che, Magaldi, Eva, Perón
<i>I'd Be Surprisingly Good For You</i>	Eva and Perón
<i>Hello and Goodbye</i>	Eva
<i>Another Suitcase in Another Hall</i>	Perón's Mistress, Che
.....	and Bar Customers
<i>Perón's Latest Flame</i>	Che, Aristocrats, Soldiers, Eva and Henchmen
<i>A New Argentina</i>	Eva, Perón, Che and Ensemble

ACT II—MUSICAL NUMBERS

<i>On The Balcony of the Casa Rosada</i>	Perón, Che and Ensemble
<i>Don't Cry For Me, Argentina</i>	Eva, Ensemble, General
<i>High Flying, Adored</i>	Che, Eva
<i>Rainbow High</i>	Eva, Tailors and Dressers
<i>Rainbow Tour</i>	Che, Perón, Advisors, Eva, Italian Ex-Admiral
<i>The Actress Hasn't Learned the Lines</i>	Eva, Aristocrats and Che
<i>And the Money Kept Rolling In</i>	Che, Ensemble
<i>Santa Evita</i>	Children, Che and Ensemble
<i>Waltz for Eva and Che</i>	Eva and Che
<i>She is a Diamond</i>	Perón, Officers
<i>Dice are Rolling</i>	Perón and Eva
<i>Eva's Final Broadcast</i>	Eva, Che
<i>Montage</i>	Eva, Che, Perón, Magaldi and Ensemble
<i>Lament</i>	Eva, Embalmers

PRODUCTION TEAM

<i>Director/Music Director</i>	Clifford Butler
<i>Assistant Vocal Director</i>	Rose Yurcina
<i>Choreographer</i>	Lisa Jones
<i>Rifle Team Choreographer</i>	Alex Crank
<i>Orchestra Conductor</i>	Steve Mansolo
<i>Stage Manager</i>	Jessie Drollette
<i>Assistant Stage Manager</i>	Jayson Peebles
<i>Lighting Design</i>	Clifford Butler
<i>Costume Design</i>	A Cut Above Costumes
<i>Sound Engineer / Operator</i>	Sam Kokajko
<i>Lights & Projector Operator</i>	Telisa Harwell
<i>Fly Operator</i>	Nick Bradford
<i>Spotlight Operator</i>	Robin Connally
<i>Running Crew</i>	Emilea Carroll, Jennifer Reiley
<i>Props Mistress</i>	Jessie Drollette
<i>Set Design/Build Leader</i>	Michael Davis
<i>Set Construction</i>	John Argersinger, Larry Baird, Charlie Black
.....	John Carnes, Albert Daniels, Chuck Dawson
.....	Jessie Drollette, Bill Gardiner, Ed Harmes
.....	Barb Jernigan, Bob Kostka, Dan Leo, Ed McCrary, Mike Mize
.....	Jerry Pinero, Richard Stelle, Jim Wilhite, Dave Wright
<i>Scenic Artist</i>	Barb Jernigan
<i>Set Painters</i>	Barb Jernigan, Sue Williams, Rickie Rieck
<i>Video Editing</i>	Rich Simms
<i>Playbill Design & Preparation</i>	Sonja Asendorf & Marsha Sray
<i>Playbill Cover</i>	Lucas Adams
<i>Season Graphic Designer</i>	Barb Jernigan
<i>Photographer</i>	Elaine Funk
<i>Poster Design</i>	Rich Simms

Resident Artists & Palace Staff

<i>Artistic Director</i>	Mary Ellen Butler
<i>Associate Artistic Director</i>	Ron Watson
<i>Equipment Manager</i>	Jessie Drollette
<i>Scenic Artist</i>	Barb Jernigan
<i>Office Manager</i>	Sonja Asendorf
<i>Office Administrators</i>	Marsha Sray, Elizabeth Little, Elaine Dobbs
<i>House Managers</i>	Monti MacMillan, Jan McCormick
.....	Erin Geren, Elaine Dobbs

Company Bios



Sara Burke (Mistress/Marguerita/Eva Perón U/S) has been performing in the Austin area for the past 9 years. Most recently she sang in the Quartet in Stephen Sondheim's *Company* at Salvage Vanguard Theatre. Previous credits include, Charity in Summer Stock Austin's Production of *Sweet Charity*, Anne Egerman in *A Little Night Music*, Audrey in *Little Shop of Horrors*, Ulla in *The Producers*, and Sister Mary Leo in *Nunsense I & II*. Sara has also been studying dance for 13 years and enjoys choreographing and working on new pieces any chance she gets. She would like to send big thanks out to her family and to the talented cast who are so wonderful to work with!



Wendy Jo Cox (Blanca Duarte/Ensemble) is thrilled to be back at the Palace after appearing in the ensemble of *Cinderella, the Enchanted*. Past roles include Annie Oakley in *Annie Get Your Gun*, and in the ensembles of *The Wizard of Oz* and *Snoopy*. She is excited to be working with such a fun and talented group of people. "Thank you to my friends and family for your abundant love and support!"



Richard Crippen (Col. Imbert/Ensemble) is very excited to participate in his first musical theater performance. He has previously appeared at the Palace in the role of audience member and decided it was time to try for a bigger role. Much thanks to those who decided to take a chance on someone with no experience and no training, but an abundance of enthusiasm. When not pondering just what he's gotten himself into, Richard spends all of his free time with his lovely wife and three boys. They have been very patient in indulging this new hobby, and he cannot express his appreciation enough.



Sean Denton (Ensemble) is excited to be in his 6th production on the Palace Stage. He was last seen as Lionel in *Cinderella*. Other Palace Shows include *1776*, *Jesus Christ Superstar*, *Grease*, and *Annie*. "If you Love the Palace and want to know what shows are next and if tickets are available get the iPhone app "PalaceShows"!"



Leann Fryer (Elisa Duarte/Ensemble) is enjoying her 2nd show at the Palace. Favorite roles include Beth in *Little Women*, Ronnette in *Little Shop of Horrors*, and Diva in *Starmites*. She was born and raised in California and studied film and music at CSU Monterey Bay. She moved to Austin 3 years ago and doesn't plan on going anywhere any time soon!



Leslie Gaar (Woman Mourner/Marguerita/Ensemble) is thrilled to be part of such a wonderful cast in her 1st performance with the Palace. Previous roles include Julie LaVerne in *Show Boat*, Adelaide in *Guys and Dolls*, Audrey in *Little Shop of Horrors*, and The Sugar Plum Fairy in *The Nutcracker* ballet. Leslie would like to thank her friends and family for all of their support. Special thanks to her husband, Claudio, who put their twins, Mila and Lucca, to bed on many rehearsal nights. "Te amo con todo mi corazón, mi vida!"

Company Bios, Cont.



Ermine Hailey (Doña Juana Iburguren/Ensemble) is excited to be working with such a talented group of people! She has previously appeared at the Palace in *Joseph and the Amazing Technicolor Dreamcoat*. Well into her second childhood, she is taking up the loves of her youth: musical theater, riding horses, and traveling around the world with her handsome and long suffering husband.



Ed Hillis (Augustin Magaldi/Rifle Team/Ensemble) is thrilled to be appearing with this talented and dedicated cast and production team, and grateful for the rare opportunity to channel his inner nightclub singer. Previous Palace credits include *Annie* (Rooster), *Joseph and the Amazing... (Issachar/Baker)*, and *The Wedding Singer*. He thanks his children Elsa and Walker for their encouragement and support, and his beautiful wife Amy for making this possible and for being his partner and inspiration.



Martha Hurley (Ensemble) is back on the Palace stage for her third show in a row and is starting to think she must be crazy. After making her debut in *Joseph...* last year, she has kept herself busy with roles in *Scrooge* (Mrs. Cratchit) and *Cinderella*. She would like to thank her parents for always being supportive, and her Palace family for surpassing her expectations and constantly reminding her why she loves theater.

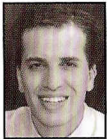


Lisa Hyde (Ermininda Duarte/Ensemble) is excited to be performing in her 1st Palace production. She is a student at the Suzanne Van Velson Vocal Studios, a neurological physical therapist at St. David's Rehabilitation Center in Austin and mother to a very darling and energetic 18 month-old, Noah. She sends thanks her amazing and supportive husband, Patrick who has made her performance possible.

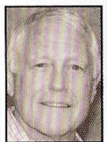


Leonard E. Lee (Gen. Arturo Rawson/Ensemble) returns for his 3rd show at The Palace, after *Big River* and *Joseph*. Since playing *Oliver* in the musical at age 9, his interests turned to music and composing. *I'm so Glad You Walked Into My Life* was his first published song recorded by The Four Tops with Stevie Wonder on harmonica. He has appeared in *Carousel* (Austin) *Godspell* (Dallas), *Greatest Shows* at Vive Les Arts and composed music for The Gemini Playhouse in Austin where he is writing music for the upcoming production of *Love Letters*. He also enjoys singing in the San Gabriel Chorale. Leonard is thankful to The Palace family for their love and support.

Company Bios, Cont.



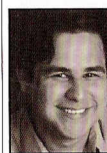
Jim Lindsay (Juan Perón) marks his Austin-area stage debut with *Evita*. Originally from New York, Jim trained at the Lee Strassburg Institute and Broadway Dance, performing in productions of *42nd Street*, *Torch Song Trilogy*, and an off-Broadway tryout of an original musical, *Marilyn and Joe*. Jim spent 10 years in Dallas where favorite roles included Kit in *No Way to Treat a Lady* (ICT Mainstage), Brad in *The Rocky Horror Show* and the title role in *Pal Joey* (Plano Repertory), Marcel in *The Boy Friend* and various roles in *Blood Brothers* (Theatre Three), Miss Industrial Northeast in *Pageant* and RG Benson in *Red Scare on Sunset* (Uptown Players), Tulsa in *Gypsy*, Cliff in *Cabaret*, Tom in *Sylvia*, and Man #1 in *Adventures in Love* (Flower Mound PAT). "As always, for David."



Frank Linenberger (Ramon Castillo/Ensemble) received his Bachelor of Music Education from the University of Cincinnati College-Conservatory of Music. He has been teaching, conducting and performing for over 35 years. He has been a Private Voice Instructor and Music Director for schools, churches and community choirs. He currently teaches private voice students in the Round Rock ISD, at his personal studio ("Mr. L's Studio"), and at the Dolce Music Studios in Georgetown. In addition, he is the Artistic Director of the Dolce Youth Choirs. He has two children and four grandchildren. He would like to dedicate this performance to his wife of 40 years; "Thank you, Denise, for all those years and for being such a wonderful and gracious wife. You are far more than I deserve."



Cody Lippard (Ensemble) is thrilled to be working with the Palace team. While participating in nine years of acting camps at Zachary Scott Theater, he learned to love acting and drama. Cody entered theater arts classes in junior high and continued for three of the four years in high school, finishing his senior year in choir. Cody is now 18 years old and beginning an Arts degree at Austin Community College. This is his first community theater production. Cody hopes to move on to a long and happy life on the stage.

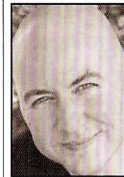


John Lopez (Ensemble) is happy to make his debut at the Palace. Having earned his BA in Theatre from St. Edward's University, John works both onstage and off as a costumer, dresser and also with wigs and makeup. Previous acting credits include *Yeomen of the Guard*, *Iolanthe*, *Pirates of Penzance*, *Ruddigore*, *HMS Pinafore* and *Mikado*, all with The Gilbert & Sullivan Society. He would like to thank his family, friends and wonderful boyfriend for all their support and love. "Next stop: Advencha!"



Sam Menke (Rifle Team/Ensemble) is excited to be performing in his 9th production at the Palace, most recently *Cinderella*. Sam is an 8th grader at Park Crest Middle School in Pflugerville and is a member of the PCMS Men's Choir and Wind Ensemble. This fall he made All Star Cast for the UIL One Act Play competition in which he played Herman in *The Dancers*. Palace credits include *Joseph and the Amazing...*, *Annie*, *Big River*, *A Christmas Carol*, and *Beauty & The Beast*. He has also been in 6 Palace summer workshops including *Godspell, Jr.*, *Aladdin Jr.*, *Treasure Island*, and *Princess & the Pea*. Sam would like to thank his friends and family for their love and support.

Company Bios, Cont.



Kirk Miller (Gen. Pedro Ramirez/Juan Duarte/Mario/Rifle Team) is excited to be making another appearance on The Palace stage. Kirk was last seen as Potiphar/Naphtali in *Joseph and the Amazing...* Other roles include Teen Angel in *Grease* and Skimbleshanks in *CATS*. Kirk attended The American Academy of Dramatic Arts in Los Angeles at age 17 and rediscovered his love for the theatre after 20 years, thanks his two daughters, Morgan and Mary-Catherine and The Palace. Kirk is thrilled to now add Tango, Rifle Training and Samba to his list of skills.



Taylor Moessinger (Mistress/Ensemble) is thrilled to be a part of her first show at the Palace. She has been involved both onstage and off with many theatres in Houston, where favorite roles include Lucy in *You're A Good Man, Charlie Brown* (Applause Theatre), the Baker's Wife in *Into the Woods* (Applause Theatre), Ariel in *Footloose!* (Applause Theatre), Sissy in *A Piece of My Heart* (Aside Theatre), and Lala in *The Last Night of Ballyhoo* (Maverick Theatre). She thanks Cliff, Jessie, Rose, and Mary Ellen for giving her this wonderful opportunity!



Nick Orzech (Rifle Team/Ensemble) is thrilled to be back on the Palace stage after performing as Lionel in *Rodgers and Hammerstein's Cinderella*, Jesus in *Godspell*, Judah in *Joseph and the Amazing...* and Jo Harper/the Young Fool in *Big River*. Other credits include Cord Elam in *Oklahoma!*, and a "Who" in *Seussical the Musical*, both at Round Rock High school. Nick is a founding member of Austin's Weird City Theater Company, where he appeared as Jim Hawkins in *Treasure Island*, Billy in Gillette's *Sherlock Holmes* and as Christopher Newman in *Giants in Those Days*. Nick can also be seen on film in the new *Dark Shadows* web series, directed by John Carroll. Nick is currently a sophomore at Round Rock High School.



Suzanne Orzech (Ensemble) has dreamed of performing in *EVITA* since she saw the show on Broadway when she was 13 years old! Past Palace credits include *Rodgers and Hammerstein's Cinderella* (Stepmother) and *Joseph and the Amazing...* (ensemble). Favorite roles include Roxie Hart in *Chicago*, Minnie Faye in *Hello, Dolly!*, Bet in *Oliver!*, and Mae Peterson in *Bye Bye, Birdie*. When not on stage, Suzanne is a Spanish and French teacher at Cedar Ridge High School (GO RAIDERS!). Suzanne thanks her family for their continuous love and support, and would like to thank her mom and dad for introducing her to the wonders of musical theater all those years ago!

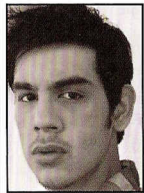


Ann Pittman (Eva Duarte Perón) is thrilled to be joining this cast and crew. While this is Ann's first performance at the Palace, she appeared with Austin's Trinity Street Players in *The Fantasticks* (Luisa), *Steel Magnolias* (Shelby), *The Diaries of Adam & Eve* (Eve), and directed *You Can't Take It With You* and *Aria Da Capo*. Other regional credits include *Into the Woods* (Witch), *The King and I* (Anna), *South Pacific* (Nelly Forbush), and *Jesus Christ Superstar* (Mary Magdalene). Ann is a writer and lives in East Austin with her dog and two cats.

Company Bios, Cont.



Trina Sherman (Ensemble) is thrilled to be performing with this incredibly talented cast and crew, having previously appeared in *Cinderella*. Her background includes performances with Zachary Scott, The Gilbert and Sullivan Society, Round Rock Community Choir, Austin Civic Chorus, Hill Country Bible Church, and Zilker Hillside Theatre. Trina is also an active volunteer and member of several Autism organizations and can take credit as the inspiration for the Inclusion version of *Scrooge the Musical* at the Palace. She would like to dedicate this performance to her daughter Amy who will be sharing the stage with her for the first time.



Ismael Soto III (Mario/Rifle Team/Ensemble) is very excited to be once again on the palace stage after his previous roles in *The Wedding Singer*, *Rodgers and Hammerstein's Cinderella* and *The Sunshine Boys*. Ismael is a 2009 graduate of Round Rock High School where previous roles include John Proctor in Arthur Miller's *The Crucible*, as well as Cal in *Ordinary People*. He was also fortunate enough to perform in The Edinburgh Fringe Festival in Edinburgh Scotland as Mr. George Antrobus in Thornton Wilders, *The Skin of our Teeth*. He thanks God and his loving family everyday for this amazing opportunity.



Jennifer Tucker (Ensemble) is excited to perform in her 1st show at the Palace. Jennifer holds a doctorate in music from UT-Austin and has performed many roles in both opera and musical theater. Other credits include Papagena (*The Magic Flute*), Barbarina (*The Marriage of Figaro*), understudy for Mrs. Potts and the Wardrobe (*Beauty and the Beast*), and the ensembles of *The Sound of Music*, *La Calisto*, *Die Fledermaus*, and *My Fair Lady*. Jennifer teaches private voice lessons to students at Georgetown High School and is a staff singer at Good Shepherd Episcopal Church.



Steve Williams (Ernesto "Che" Guevara) comes back to us after a three-month stint with Zach Scott as Benjamin Coffin III in *Rent*. Steve is a designer as well as an actor. You may have seen his designs for the Palace's *Grease* and *A Funny Thing Happened...* Steve's acting credits include *Lend me a Tenor*, *A Few Good Men*, *Sleeping Beauty* at the Vortex Repertory Theatre; Disney's *Beauty & The Beast*, *Hello Dolly*, *Songs for a New World*, *Oklahoma*, *Pirates of Penzance*, *The Miracle Worker*, and *Grease*. He would like to dedicate this show to the people of the Palace. And as Che would say, "Until victory always"



Children's Ensemble

Lucy Cotman– Morrison
Grace Denton
Ellie Dieringer
Catherine Hipolito



Emma Sabrina Kamen
Amy Sherman
Adele Simms
Emma Simms



Brittany Smith
Sydney Swain
Audra Wilkinson
Paige Wilkinson



Production Team Bios

Mary Ellen Butler (Artistic Director) has been the Artistic Director for the Palace since mid-2004; as Artistic Director, she produces the season and directs many shows, the most recent being the 2010-2011 season opener *Cinderella*, *The Enchanted*. She also directed *Joseph and the Amazing Technicolor Dreamcoat* and *Annie*, both from the 2009-10 Season. Mary Ellen is also in charge of the year-round Theatrical Workshops for Youth.

Ron Watson (Associate Artistic Director) has been a director for the Palace since 1999. His most recent production a director was *Scrooge, The Musical*. Favorite productions include *Man of La Mancha*, *Grease*, *Nunsense*, *A Funny Thing Happened...*, *1776*, *A Few Good Men*, and *Noises Off*. Ron was Technical Director for the Palace for four seasons before becoming Associate Artistic Director in 2009-10. Ron holds a BFA in Directing from SWTSU (now Texas State University).

Clifford Butler (Director/Music Director) is pleased to be back in the director's chair again. Cliff's previous directing credits at the Palace include *Anything Goes!*, *The Complete Works of William Shakespeare (abridged)*, *CATS*, and most recently, *A Little Night Music*, which won the 2011 B. Iden Payne People's Choice award. He has also directed *The Fantasticks* and *Man of La Mancha* with Sam Bass Community Theatre in Round Rock, and has been the musical director for several productions, including *The Sound of Music*, *The Music Man*, *Oliver!*, *1776*, and *Grease*. He has even found time to be on stage, most recently as Seymour in *Little Shop of Horrors* and Judas in *Jesus Christ Superstar*. When he's not doing creative work with the Palace, Cliff works as a data analyst with Dell and does freelance work as a web developer, including work on the Palace's website - so if you had any problems getting your ticket online, feel free to corner him after the show and let him know!

Production Team Bios Cont.

Rose Yurcina (Assistant Vocal Director) is a graduate from Central Washington University in Ellensburg, WA with a BM in Vocal Performance and relocated to the Austin area with her husband in 2008. She loves performing just about anything including: musical theater, opera, choral music and vocal jazz. When she's not at the theatre, you can find Rose working as a Graduate Coordinator in the Butler School of Music at UT, volunteering with the Junior High Uprising at Gateway Church or running around a soccer field.

Lisa Jones (Choreographer) did her most recent work on the Palace musicals *Joseph and the amazing...*, *Annie*, *Grease*, *The Best Little Whorehouse in Texas*, *Jesus Christ Superstar*, *A Christmas Carol, the Musical*, and *CATS*. She also enjoys working with teenagers in the Palace workshops. Lisa taught ballet, tap, and jazz for many years. She studied dance at UT and Southwest Texas State (now Texas State). She really appreciates the love and support that her family gives her. Lisa is a wife, mom, and math teacher.

Jessie Drollette (Stage Manager) is in her fifth season with the Palace and couldn't be happier. This is a remarkable place to call home, and every show just gets better. She says, "The community and the amazing talent that are drawn to our jewel of a theatre are just astounding!" Jessie holds a Bachelor of Fine Arts with an emphasis in Stage Management. Show credits include *1776*, *The Waiting Room*, *A Little Night Music*, *A Few Good Men*, *Peter Pan*, *The King and I*, and *Last Night of Ballyhoo*, to name a few. Jessie would like to thank an amazing cast and crew for this fun ride.

Jayson Peebles (Assistant Stage Manager) stumbled across the Palace in November of 2008, and while pitching in to help strike *The Producers* he gained a new home and family. This is his third season and 14th production at the Palace. Jayson has been captivated by theatrical tech work since the age of 13 and vows to never let his "tech blacks" gather dust. He thanks every techie he has ever met because without their guidance he would not be where he is today.

SPECIAL THANKS

To Joanne and Bill Harrah of Sun City for their donation of \$100,000 for the renovation of The Palace's Tin Barn. Check it out!

To the Texas Commission on the Arts for their ongoing support of both the Palace's theatrical workshops and the season of productions.

To the Albert and Ethel Herzstein Charitable Foundation for their financial support of the renovation of the Tin Barn.

To our builders, who not only volunteer to make sure our sets are beautiful, safe, and completed on time, but also have performed miracles in renovating the Tin Barn.

The director thanks David Sray, Suzanne Orzech, Leslie Gaar, Tracy Drollette and Rich Simms