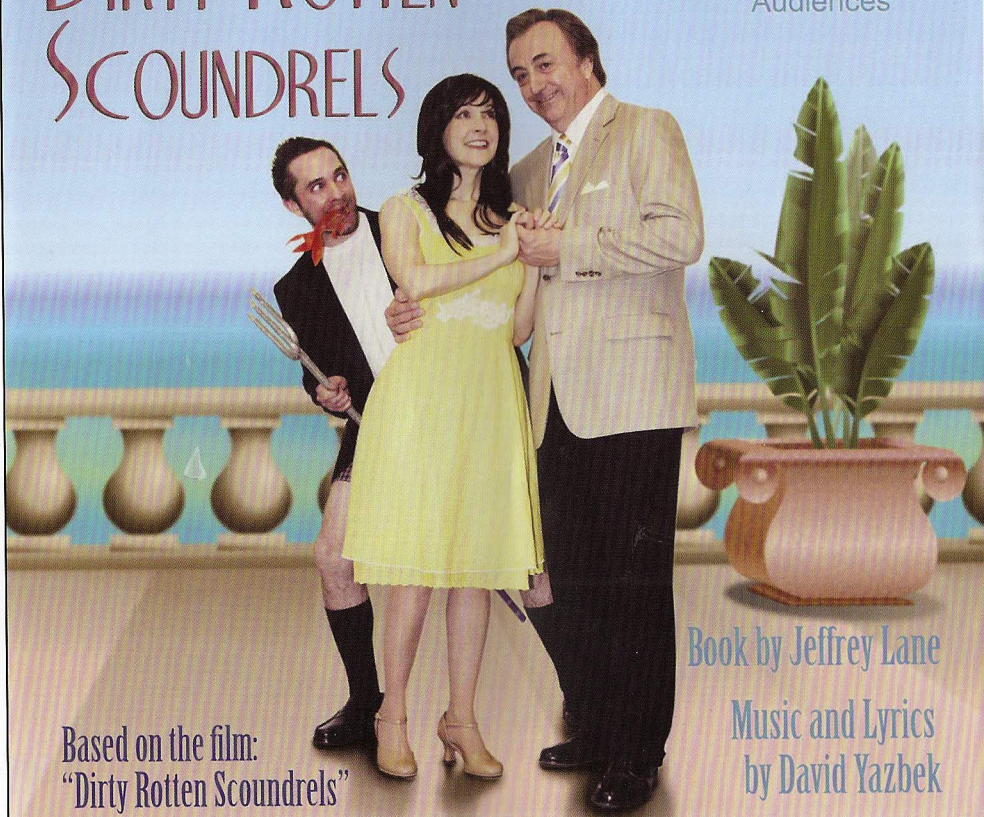




DIRTY ROTTEN SCOUNDRELS

For
MATURE
Audiences



Based on the film:
"Dirty Rotten Scoundrels"

Written by Dale Launer
and Stanley Shapiro & Paul Henning

Book by Jeffrey Lane
Music and Lyrics
by David Yazbek

Directed by Mary Ellen Butler

Ticket Prices:

\$24 General

\$22 Seniors (55+)

\$14 Active Military
& Students (13-22)

\$10 Children (12 & under)

Supported in part by:



Graphic Design by: Richard Simms
Photography by: Elaine Funk

www.thegeorgetownpalace.org

Show Dates:
Weekends April 1 to May 1, 2011

Fridays & Saturdays @ 7:30 pm

Sundays @ 2:00 pm

810 S. Austin Ave.
In Historic Georgetown
Just off the Square...
(512) 869-7469

The Cast

Lawrence Jameson Joe Penrod
 Freddy Benson Andrew Cannata
 Christine Colegate Patty Rowell
 Andre Thibault Rick Felkins
 Muriel Michelle Cheney
 Jolene Suzanne Orzech
 Lenore Trina Sherman / Sabrina Olivia (Swing)
 Sophia Sharon Smith
 Renee Sara Burke
 Men's Ensemble Wesley "Fox" Buchele, Tom Burke
 Christopher Castaneda, Cody Eastman, Jim Mutzabaugh
 Brandon Myers, Nick Orzech, Ismael Soto III
 Women's Ensemble Sara Burke, Jennifer Butler, Bethany Jones
 Jesee Kelsch, Yvonne Love, Sabrina Olivia,
 Suzanne Orzech, Trina Sherman, Sharon Smith
 Marissa Teasley, Anne Violette

The Band

Lannes Hilboldt Conductor / Bass
 Jonathan Borden 1st Keyboards
 Kent Dugan Saxophone
 Dave Lee Trumpet
 Steve Mansolo 2nd Keyboards
 Bob Overton Guitar
 Dave Reyes Drums

The Setting

The coast of France a few years ago.

Dirty Rotten Scoundrels is presented through exclusive arrangement with MTI at
421 West 54th Street, New York, NY 10019.

The Palace is a member of the Greater Austin Creative Alliance, the Downtown
Georgetown Association, the Georgetown Chamber of Commerce, and
the League of Historic American Theatres.

ACT I—MUSICAL NUMBERS

<i>Give Them What They Want</i>	Lawrence, Andre, Ensemble
<i>What Was a Woman To Do</i>	Muriel, Women
<i>Great Big Stuff</i>	Freddy, Ensemble
<i>Chimp In a Suit</i>	Andre
<i>Oklahoma</i>	Jolene, Lawrence, Ensemble
<i>All About Ruprecht</i>	Lawrence, Ruprecht, Jolene
<i>What Was a Woman To Do (Reprise)</i>	Muriel
<i>Here I Am</i>	Christine
<i>Nothing Is Too Wonderful To Be True</i>	Christine, Freddy
<i>The Miracle (Act I Finale)</i>	Company

15-Minute Intermission

ACT II—MUSICAL NUMBERS

<i>Ruffhausin' Mit Shuffhausen</i>	Freddy, Christine & Dr. Shuffhausen
<i>Like Zis/Like Zat</i>	Andre, Muriel
<i>The More We Dance</i>	Lawrence, Christine, Ensemble
<i>Love Is My Legs</i>	Freddy, Christine, Ensemble
<i>Love Sneaks In</i>	Lawrence
<i>Like Zis/Like Zat (Reprise)</i>	Muriel
<i>Son of Great Big Stuff</i>	Freddy, Christine
<i>The Reckoning</i>	Lawrence, Freddy, Christine
<i>Dirty Rotten Number</i>	Lawrence, Freddy
<i>Finale</i>	Company

PRODUCTION TEAM

<i>Director</i>	Mary Ellen Butler
<i>Vocal Director</i>	Rose Yurcina
<i>Conductor</i>	Lannes Hilboldt
<i>Choreographers</i>	Danny Herman & Rocker Verastique
<i>Stage Manager</i>	Faith Castaneda
<i>Assistant Stage Manager</i>	Sherman Knetig
<i>Lighting Design</i>	Clifford Butler
<i>Costume Design</i>	Mary Ellen Butler
<i>Sound Engineer / Operator</i>	Rod Simonsen
<i>Light Board Operator</i>	Ebony Morningstar
<i>Fly Operator</i>	Christopher Castaneda
<i>Spotlight Operator</i>	Telisa Harwell
<i>Running Crew</i>	Nikki Bora, Charleen Scott, Jim Scott
<i>Set Design</i>	Mary Ellen Butler
<i>Set Build Leader</i>	Michael Davis
<i>Set Construction</i>	John Argersinger, Larry Baird Charlie Black, John Carnes, Albert Daniels Chuck Dawson, Bill Gardiner, Ed Harmes, Barb Jernigan Bob Kostka, Dan Leo, Ed McCrary, Mike Mize, Jerry Pinero Richard Stelle, Jim Wilhite, Sue Williams, Dave Wright
<i>Scenic Artist</i>	Barb Jernigan
<i>Set Painters</i>	Barb Jernigan, Sue Williams, Rickie Rieck
<i>Video Design</i>	Rich Simms
<i>Playbill Design & Preparation</i>	Sonja Asendorf & Marsha Sray
<i>Playbill Cover</i>	Lucas Adams
<i>Season Graphic Designer</i>	Barb Jernigan
<i>Photographer</i>	Elaine Funk
<i>Poster Design</i>	Rich Simms

Resident Artists & Palace Staff

<i>Artistic Director</i>	Mary Ellen Butler
<i>Associate Artistic Director</i>	Ron Watson
<i>Equipment Manager</i>	Jessie Drollette
<i>Scenic Artist</i>	Barb Jernigan
<i>Office Manager</i>	Sonja Asendorf
<i>Office Administrators</i>	Marsha Sray, Elizabeth Little & Elaine Dobbs
<i>House Managers</i>	Monti MacMillan, Jan McCormick Erin Geren, Elaine Dobbs
<i>Lobby Computer</i>	Allison McKee, Elaine Dobbs

Company Bios



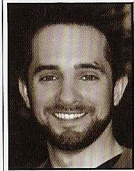
Wesley "Fox" Buchele (Ensemble) is excited to be making his Palace debut. Fox is self-employed and enjoys performing in his spare time. He thanks his family for their support and would like to remind them that they don't have to see every single performance. He would like to thank Mel, Bethanne, and Chuck for starting him on the path to community theatre. "Enjoy the show, we had a blast making it!"



Sara Burke (Ensemble/ Dance Captain) has been performing in the Austin area for 9 years. Most recently seen in *Evita* at the Palace, previous credits include Charity in Summer Stock Austin's *Sweet Charity*, Anne Egerman in *A Little Night Music*, Audrey in *Little Shop of Horrors*, Ulla in *The Producers*, and Sister Mary Leo in *Nunsense I & II*. Sara also enjoys choreographing and working on new dance pieces any chance she gets. She would like to send much love to her family who are always there to support her!



Jennifer Butler (Ensemble) is happy to be on stage again after performing as Cinderella and in *Joseph* and *CATS!* in 2007 (she also danced during NYC in *Annie*.) She is a recent McNeil High School Graduate and when not on stage, she spends her time with her twin hobbies of computer gaming and sleeping.



Andrew Cannata (Freddy Benson) is making his debut on the Palace Stage. He has been performing for Austin audiences for the last six years, and won several accolades including back to back B. Iden Payne awards for "Best Actor in a Musical." Andrew was most recently seen on the Zach Theatre stage as Mark in *RENT*. He is very excited to be a part of *Dirty Rotten Scoundrels* and would like to thank those who have supported him down his musical-theatre path.

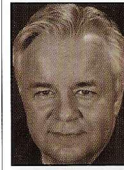


Michelle Cheney (Muriel) has appeared on several stages in Central Texas, most recently at TexArts (*Holiday Cabaret*) and at Austin's City Theatre (*Baker's Wife/ Into the Woods*). She is a multiple B. Iden Payne nominee and winner of the award for North By Northwest Theatre's production *I Love You, You're Perfect, Now Change*. Last year, she wrote, produced and starred in her own one-woman show *Excuse Me, While I Change*. Palace roles include Mona in *Best Little Whorehouse*, Adelaide in *Guys and Dolls*, Charlotte Hays in *Moon Over Buffalo* and many others. Special thanks to friends and family.



Cody Eastman (Ensemble) was last seen in *The Wedding Singer* and he's excited to be back. During the last year he's worked to extend his musical capabilities and competed in local competitions, winning first place in "Austin's Got Talent 2010." Other Palace credits include Frid in *A Little Night Music*, Rooster in *Annie*, and Ensemble in *Man of La Mancha* and *Grease*. He wants to thank his friends and fellow actors who push him to become a better vocalist, actor, and person. "Thank you all for your time and patience, and the chance to work with and learn from such amazing talent over the last two years."

Company Bios, Cont.



Rick Felkins (Andre) has several previous Palace credits, including Pseudolus in *A Funny Thing Happened...* and Ben Franklin in *1776*. Film credits include *What's Love Got to Do With It?*, *Former Child Star*, *Simple Gifts*, and *Lift*. On television he was seen on *MAD TV* and various soap operas, including *General Hospital* and *The Young and the Restless*. Stage credits include the International Tour of *FAME*, *Doing Judy* at the Alcazar Theatre in San Francisco, *Little Mary Sunshine* (with Amanda McBroom), and *Very Good Eddie* at the Mayfair Music Hall in Santa Monica.



Bethany Jones (Ensemble) is glad to be back on the Springer Memorial Stage. She has performed in several shows at the Palace including *Guys and Dolls*, *The Music Man*, *Oklahoma*, and *Hello Dolly!* She is currently a student at Austin Community College. Bethany has had a great time throughout *Dirty Rotten Scoundrels* and thanks her friends and family for their love and support.



Jessica Kelsch (Ensemble) has choreographed Palace shows *The Wedding Singer*, *Joseph...*, *Nunsense I and II*, *Man of La Mancha*, *Gifts of the Magi*, and the 1st and 2nd Annual Gala. Palace performance credits include Mrs. Potiphar (*Joseph...*), *Cha Cha (Grease)*, and featured dancer and dance captain in *The Producers* and *Jesus Christ Superstar*. Jessica holds a BS in Business Management and BFA in Dance Performance from Northern Illinois University. She would like to thank her fiancé, David, for his support!



Yvonne Love (Ensemble) is excited to be back at the Palace. Palace credits include the Ghost of Christmas Past in *Scrooge*, Mrs. Nordstrom in *A Little Night Music*, the Queen in *Cinderella*, and the 2nd Annual Gala. Yvonne's opera experience includes such roles as Overseer in *Elektra*, Countess in Mozart's *Marriage of Figaro*, Madama Cortese in Rossini's *Il Viaggio a Reims*, Madame de Tourvel in *Susa's Dangerous Liaisons*, and Dorabella in Mozart's *Così fan tutte*. Yvonne is very excited to be working with this talented cast and crew!



Jim Mutzabaugh (Ensemble) is now well into his 8th season in the Georgetown area. He was most recently seen in *Cinderella* as the King, *Joseph...* as Jacob, in *Harvey* as Judge Omar Gaffney and in *Big River* as Judge Thatcher, Counselor Robbins, and the Doctor. He was also the lovable bum, Soapy Smith, in *The Gifts of The Magi*. He worked crew for *Annie*, *Grease*, *The Producers*, and *Jesus Christ Superstar*, as well as playing Sgt. Michael Kelly in *The Musical Comedy Murders of 1940*.



Brandon Myers (Ensemble) is thrilled to be making his Palace debut. He attended the American Musical and Dramatic Academy to further his love of Musical Theatre, and graduated in 2008. Previous roles include Charlie Brown in *Snoopy!!!*, Capitano in *A Company of Wayward Saints*, Teen Angel in *Grease*, Agwe in *Once on This Island*, Lenny Ganz in *Rumors*, and sang lead for the barbershop quartet in Zilker Hillside's *The Music Man*. Brandon would like to thank his family and friends for their support and encouragement.

Company Bios, Cont.



Sabrina Olivia (Ensemble) is thrilled to return to the Palace for *Dirty Rotten Scoundrels!* She would like to thank her family and friends for their support. Special thanks to our crew for making this production extra special; we couldn't do this without you!



Nick Orzech (Ensemble) is thrilled to be back on the Palace stage after performing in *EVITA*, as Lionel in *Rodgers and Hammerstein's Cinderella*, Jesus in *Godspell*, Judah in *Joseph and the Amazing...*, and Jo Harper/the Young Fool in *Big River*. Other credits include Cord Elam in *Oklahoma!*, and a "Who" in *Seussical the Musical*, both at Round Rock High School. Nick is a founding member of Austin's Weird City Theater Company, where he appeared as Jim Hawkins in *Treasure Island*, Billy in Gillette's *Sherlock Holms* and as Christopher Newman in *Giants in Those Days*. Nick can also be seen on film in the new *Dark Shadows* web series, directed by John Carroll. Nick is currently a sophomore at Round Rock High School.



Suzanne Orzech (Jolene/Ensemble) is performing in her 4th Palace show, including *Joseph and the Amazing...*, *Evita*, and *Cinderella* (Stepmother). While studying in France, Suzanne played Roxie Hart in *Chicago* under the direction of Bruno Alain. Favorite roles include Minnie Faye in *Hello, Dolly!*, Bet in *Oliver!*, and Mae Peterson in *Bye Bye, Birdie*. Suzanne is a Spanish and French teacher at Cedar Ridge High School. Suzanne thanks her family, especially her Husband, Mark, who somehow manages to put up with her crazy schedule. "I love you, Mark!"



Joe Penrod (Lawrence Jameson) was most recently seen at the Palace as Ebenezer Scrooge in *Scrooge, The Musical* and as Frederik Egerman in *A Little Night Music*. His previous Palace credits include Don Quixote (*Man of La Mancha*), John Adams (*1776*), Pilate (*Jesus Christ Superstar*), and Dr. Philip Gottschall (*God's Man in Texas*). In the Austin area, he has appeared with North by Northwest Theatre (*I Love You, You're Perfect, Now Change* – B. Iden Payne Outstanding Cast Performance), Trinity Street Players (*The Fantasticks*), and Tex-Arts (*I'll Be Seeing You* and *Golf: The Musical*). After completion of a Master of Music degree from the University of Illinois, Joe spent over eight years in New York City, working as an opera singer and actor. He made his New York recital debut at Carnegie Recital Hall as a winner of the East & West Artists Competition.



Patty Rowell (Christine) is thrilled to share the stage with such a talented cast and crew. Previous Palace credits: Narrator in *Joseph and the Amazing...*; Audrey in *Little Shop of Horrors*; Reno Sweeney in *Anything Goes*; Sarah Brown in *Guys and Dolls*; Marian in *The Music Man*; Martha Jefferson in *1776*. Austin, Houston, and Chicago credits: Sister Amnesia in *Nunsense*; Nancy in *Oliver!*; Little Red in *Into the Woods*; Jennifer Rumson in *Paint Your Wagon*; Mina in *Dracula, the Musical*; Lucy in *You're A Good Man, Charlie Brown*; Dorothy in *Wizard of Oz*; Mistress in *Evita*; Antonia in *Man of La Mancha*; Vittoria in *The Gondoliers*. Much love to her dirty rotten (but lovable) scoundrels at home.

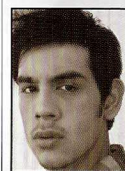
Company Bios, Cont.



Trina Sherman (Ensemble) is thrilled to be performing with this incredibly talented cast and crew, having previously appeared in *EVITA* and *Cinderella*. Her background includes performances with Zachary Scott, The Gilbert and Sullivan Society, Round Rock Community Choir, Austin Civic Chorus, Hill Country Bible Church, and Zilker Hillside Theatre. Trina is also an active volunteer and member of several Autism organizations and can take credit as the inspiration for the Inclusion version of *Scrooge the Musical* at the Palace.



Sharon Smith (Sophia/Ensemble) is delighted to return to the Palace stage for her 7th production. Palace credits include *Grease* (Jan), *Annie* (Boylan/Perkins), *Man of La Mancha* (Gypsy Queen/Antonia u/s), *Harvey* (Myrtle Mae u/s), *Best Little Whorehouse* (Durla), and *A Funny Thing Happened...* (Geminae). Salado Silver Spur Theater credits include *Boughs of Folly*, *Barefoot in the Park* (Corie), and *CounterGirls* (Lib). Temple Civic Theater roles include *South Pacific* (Rita Adams) and *Dearly Beloved* (Frankie). Sharon teaches secondary Dyslexia/Reading Intervention for GISD. She wishes to thank her husband, Steve, and her friends and family for their unending support and encouragement.



Ismael Soto III (Ensemble) is very excited to be back on the Palace stage after his previous roles in *EVITA*, *The Wedding Singer*, *Rodgers and Hammerstein's Cinderella*, and *The Sunshine Boys*. Ismael is a 2009 graduate of Round Rock High School where previous roles include John Proctor in Arthur Miller's *The Crucible*, as well as Cal in *Ordinary People*. He was also fortunate enough to perform in The Edinburgh Fringe Festival in Edinburgh Scotland as Mr. George Antrobus in Thornton Wilder's *The Skin of our Teeth*. He thanks God and his loving family everyday for this opportunity.



Marissa Teasley (Ensemble) is happily making her Palace debut. A seven-year Georgetown resident, she loves singing, dancing, and entertaining. Marissa was recently a lead in *Shut Up and Sp-*, an original musical comedy by No Ties Productions in Austin. Favorite roles include Tzeidal in *Fiddler on the Roof*. Marissa is a high school senior and enjoys volunteering, reading, and writing music. She is grateful to be a part of such a wonderful group and hopes you enjoy the show as much as she does!



Annie Violette (Ensemble) is proud to be making her Palace debut. Past credits include leads in *A Midsummer Night's Dream* and *The Miracle Worker*. While attending Texas A&M, Annie was involved in the SWAMP film-making society. Recently she has played several small roles, including a cheerleader on the TV show *Friday Night Lights*. She thanks Mary Ellen for casting her in such a fantastic production. She also thanks God, her parents, and her husband for never failing to show their love and support.

Special thanks to Christopher Castaneda and Tom Burke for joining the cast at the last minute to stand in as Sailors.

Production Team Bios

Mary Ellen Butler (Artistic Director/ Director) has been the Artistic Director for the Palace since mid-2004; as Artistic Director, she produces the season and directs many shows, the most recent being the 2010-2011 season opener *Cinderella*, *The Enchanted*. She also directed *Joseph and the Amazing Technicolor Dreamcoat* and *Annie*, both from the 2009-10 Season. Mary Ellen is also in charge of the year-round Theatrical Workshops for Youth.

Ron Watson (Associate Artistic Director) has been a director for the Palace since 1999. His most recent production as director was *Scrooge, The Musical*. Favorite productions include *Man of La Mancha*, *Grease*, *Nunsense*, *A Funny Thing Happened...*, *1776*, *A Few Good Men*, and *Noises Off*. Ron was Technical Director for the Palace for four seasons before becoming Associate Artistic Director in 2009-10. Ron holds a BFA in Directing from SWTSU (now Texas State University).

Rose Yurcina (Vocal Director) is a graduate from Central Washington University in Ellensburg WA with a BM in Vocal Performance and relocated to the Austin area with her husband in 2008. She loves performing just about anything including: musical theater, opera, choral music, and vocal jazz. When she's not at the theatre, you can find Rose working as a Graduate Coordinator in the Butler School of Music at UT, volunteering with the Junior High Uprising at Gateway Church, or running around a soccer field.

Danny Herman and Rocker Verastique (Choreographers) are internationally recognized directors, choreographers, actors, and teachers. Both have vast credits in Broadway productions, national and European tours, Ballet Company engagements, and Regional Theatre. Danny began his career as the Purple Panda on Mister Rogers' Neighborhood and went on to co-direct and co-choreograph the acclaimed *Dreamgirls - the 20th Anniversary Benefit Concert* for The Actors' Fund and choreographed the 1987 national tour of *Dreamgirls*. Rocker danced six years with artistic director Mikhail Baryshnikov in American Ballet Theatre, spent four years on the television series *Fame*, and was the male lead in the award-winning music video *Nasty* opposite Janet Jackson.

Since moving to Austin, Danny and Rocker have choreographed *The Pajama Game* (B. Iden Payne Award), *City of Angels*, *Bobrauschenbergamerica*, *The Imaginary Invalid*, *Eurydice*, and (currently) *Carousel* (Mary Moody Theatre, Saint Edward's University); *A Funny Thing Happened on the Way to the Forum*, *The Fantasticks*, *Jacques Brel is Alive and Well and Living in Paris*, and (currently) *Stop The World I Want To Get Off* (Austin Playhouse); *Little Shop of Horrors*, *Once On This Island*, and *Anything Goes* (McCallum High School); as well as *Deep Waters* and *Benny* (Ballet East). Danny and Rocker are looking forward to choreographing *Footloose* this summer in Zilker Park and Directing and Choreographing *Chicago* and *A Chorus Line* next season here at the Palace (production rights pending). For more information on Danny and Rocker, check out their profiles at www.balletaustin.org/community/broadway.php

Production Team Bios, Con't

Faith Castaneda (Stage Manager) begins her 4th season at The Palace. Faith's BFA in Theatre from Tarleton State University has been useful in Georgetown, and she's loved every minute of it. Most recently at the Palace, she was Stage Manager for *The Wedding Singer*; earlier this year, she put on her dancing shoes in *Joseph and the Amazing...* and *Puttin it Together*, the annual Gala. Other Palace Stage Manager credits include *Annie*, *Nunsense I & II*, *Driving Miss Daisy*, *Grease*, and *The Gifts of the Magi*. She is excited to be sharing this show with her husband, Christopher; and she thanks her mother for encouraging her to never give up on her dreams.

Sherman Knetig (Assistant Stage Manager) is proud to be working on his first show as ASM. Palace credits include Stage Manager for *Cinderella* and *Harvey* and Co-Stage Manager for *Annie*. Sherman graduated from Tarleton State University with BFA in Theatre and has worked back stage in shows such as *Scrooge, the Musical* and *The Nerd*. He is also a teacher with the Palace Children's Workshops. He would like to give a great and many thanks to the cast and Crew of this show for making it so much fun. He thanks God and his family for supporting him in all his theatre endeavors.

SPECIAL THANKS

To Joanne and Bill Harrah of Sun City for their donation of \$100,000 for the renovation of The Palace's Tin Barn. Check it out!

To the Texas Commission on the Arts for their ongoing support of both the Palace's theatrical workshops and the season of productions.

To the Albert and Ethel Herzstein Charitable Foundation for their financial support of the renovation of the Tin Barn.

To our builders, who not only volunteer to make sure our sets are beautiful, safe, and completed on time, but also have performed miracles in renovating the Tin Barn.

Mary Ellen Butler thanks Bell Cleaners for providing the Tuxedos, the Caring Place for donating gowns, Georgetown Medical Supply for use of the wheelchair, Ellen Simms and Gwen Bradford for their sewing expertise, Bob Cross for the loan of the Jewelry and Houston Hester for donating the beef jerky.

Do You Want to Volunteer In the Box Office?

We are looking for a few computer-savvy individuals to answer phones and sell tickets in the lobby box office. Shifts are 10-1 and 1-4 M-F. If you are interested in giving us one or two days a week, call us or see the House Manager for a volunteer form.

512-869-7469



GEORGETOWN PALACE THEATRE, INC.

A 501(c)(3) Non-Profit Organization

THE 2011 BOARD OF DIRECTORS

Michael Davis, President

Bob Kostka, Past President

Doug Smith, Past President

Larry McCormick, First Vice President

Sonja Asendorf, Second Vice President

Don Anderson, Treasurer

Pat Nichols, Secretary

John Argersinger

Larry Baird

Arden Baxter

Gary Brown

Tom Burke

John Carnes

Russel Dutkiewicz

Ed Harmes

Bill Harrah

Joanne Harrah

Derek Jones

Ed McCrary

Mike Nichols

Joe Penrod

Art Rodriguez

Rick Rowder

Bill Springer

Karen Turpin

Artistic Director

Mary Ellen Butler

Associate Artistic Director

Ron Watson

COMMITTEE CHAIRS

Board Development - Bob Kostka

Budget & Finance - Karen Turpin

Facilities - Russel Dutkiewicz

Grants - Arden Baxter

Marketing & Sponsorships - Doug Smith

Operations & Communication - Sonja Asendorf



2010-2011 PATRONS

IMPRESARIO

Joanne & Bill Harrah

Carolyn Holloway

Paul & Lois Ranney

Doug & Sue Smith

PRODUCER

Harold & Jean Steadman

James & Shirley Varner

DIRECTOR

Don & Kay Anderson

John & Diana Argersinger

Wally & Sonja Asendorf

Arden Baxter

Doug & Nell Benold

Gladys Brooking

Gary & Peggy Brown

Howard & Penny Burt

Kathleen Butler

Michael Davis

Russel & Ellen Dutkiewicz

Bernie & Betty Farkas

Ed & Shirley Harmes

Telisa Harwell

Marvin & Ouida Henderson

Mary & Howard Kirchick

Bob & Deb Kostka

Larry & Nancy McCormick

John A. Morovitz

Mike & Pat Nichols

Bob & Bonnie Pearson

Joe & Sylvia Penrod

Martie & Gregg Peterson

Bradley & Pamela Prais

Scott Saunders (Jabil)

Jim & Charleen Scott

Clark Thurmond & Linda Scarbrough

Karen & Duke Turpin

Jane Waterman

ACTOR

Ermine Hailey

Bob & Barbara Hallmark

Charles & Myra Hill

Joe & Bettye Keller

Mike & Carol Mize

Bill & Jeanie O'Connell

Mr. & Mrs. C.G. Percy

Richard & Rita Petro

Sam & Rebecca Pfiester

Linnea Ratcliff

Cathy & Jennifer Reiley

ACTOR, Cont.

Dick & Margaret Stelle

Sun City Kiwanis Club

Nancy York

STAGEHAND

Larry & Sue Baird

Dorothy & Bernard Baumbach

John & Terri Carnes

Delana Lands

Betty Luedecke

Ed & Bettye McCrary

Jim & Betsy Mueller

Dave & Vicki Reed

Lynn Strawn

Roger & Angie Wright

FAN

Sean & Sandy Althaus

Robert Anderson

Bettie Horn Bendewald

Harold & Sandra Bergh

Jim & Kaye Bishop

Bill & Marcia Blodgett

Dr. Stephen & Ernestine Brown

John & Sue Buntin

Robert & Alsa Cotner

Mr. & Mrs. R.A. Cryan

Bob & Judy Davis

Don & Ellie Decker

Phil & Barbara Dorrah

Sharon Dunning

Dottie Foreman

Dr. Ben & Jeanne Gaines

Tom & Julie Greer

Don & Mary Kay Hanson

Angie & Tim Harris

Jean Johnston

Derek Jones

Carol Liberty

Joan & Charles Keith

Michael Meigs (Austinlivetheatre.com)

Wayne Mock

James & Sandra Montgomery

Don & Pat Moore

Ben & Paula Oliver

Jerry & Ann Pearson

Myrna Rapp

Mike & Pat Ricker

Larry & Anita Robertson

Patricia Sharp

Jane Edwards Shivers

Bob & Mary Jo Schoppa

Gilbert & Carolyn St. Clair

James & Ruth Tipton

Robert Wakefield

Jean & Dick Wiebe

Ray & Beth Woodard

Wag-A-Bag (Nancy Rabb)