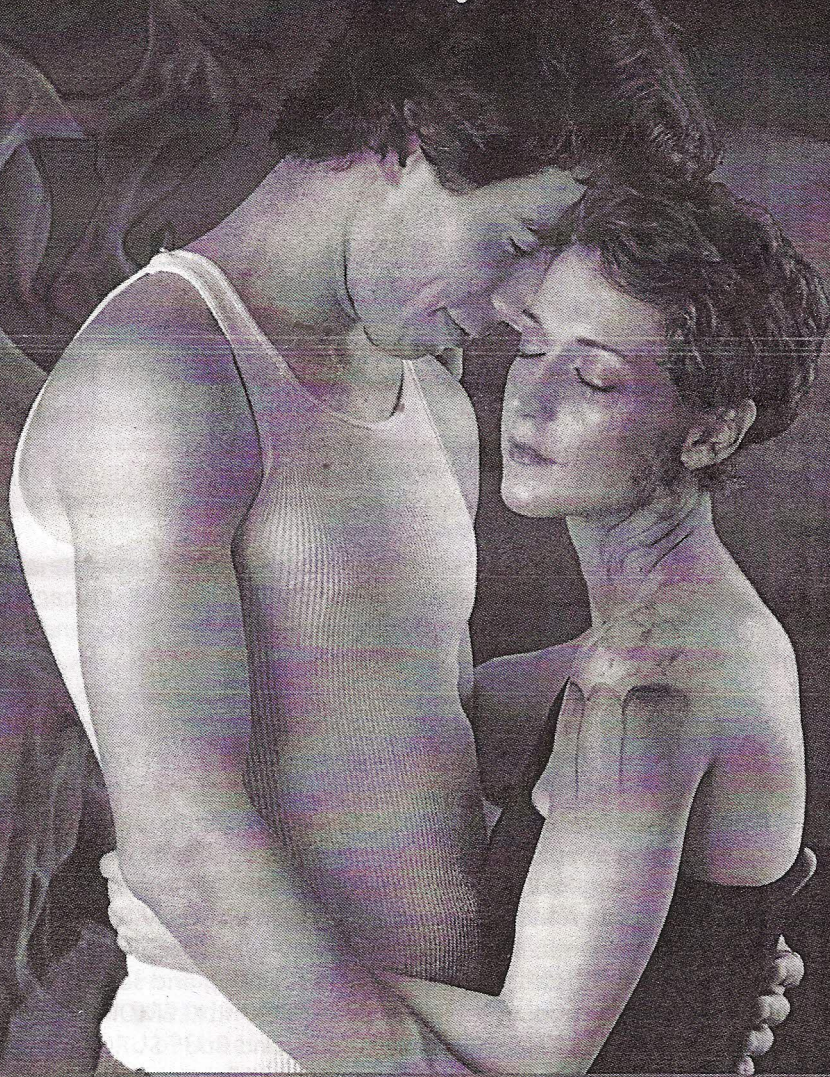


Shrewd Productions presents

The Dragon Play

By Jenny Connell

Directed by Shannon Grounds



THE DRAGON PLAY

Written by Jenny Connell Directed by Shannon Grounds

CAST

Xander Slay-Tamkin	Boy
Liz Fisher	Woman
Joseph Garlock	Dragon/Loserboy
Rommel Sulit	Man
Amelia Turner	Dragongirl

CREW

Lighting Designer	Patrick Anthony
Video Designer	Lowell Bartholomee
Stage Manager & Sound Board Operator	Katherine Beamer
Technical Director	Zac Crofford
PR Photographer	Kenny Gall
Sound Designer	Gunn Bros.
Set Designer	Connor Hopkins
Light Board Operator	Amy Lewis
Photographer	Kimberley Mead
Composer	T. Lynn Mikeska
Production Manager	Melinda Parr
PR	Michael Slefinger

About the Playwright: Jenny Connell is a Brooklyn-based playwright and teacher, a member of Austin Script Works, Ars Nova's Play Group, The Dramatists Guild, The Playwrights Center of Minneapolis, and a graduate of UT's MFA Theater program. Her plays have been produced in New York, Chicago, and Austin, and have been finalists for BAPF, the Heideman, Seven Devils, and the O'Neill conference.

About the Director: Shannon Grounds is a founding member and Producing Artistic Director of Shrewd Productions, as well as a company member of Hyde Park Theatre and Biophilic Productions. She has collaboratively directed and co-directed with Shrewd Productions and The Bedlam Faction, but THE DRAGON PLAY is her solo directing debut. As a producer she has been honored by the Austin Critic's Table for her work in WHERE ARE THEY NOW? (Winner for Best Production of a Drama), IO: A MYTH ABOUT YOU, and MILKMILKLEMONADE. As an actress, she is a nine-time B. Iden Payne nominee, has received three Austin Theatre Examiner nods (most recently for BIG LOVE), and seven Austin Critics' Table nominations, winning for her roles in MILKMILKLEMONADE (Shrewd), TITUS ANDRONICUS (Austin Shakespeare), and BLUE SURGE (Hyde Park Theatre). She is incredibly grateful to Jenny Connell for trusting her with this amazing, beautiful play - to the wonderful cast and production team for breathing fire into it - to all the friends that lent a hand - and to her family and supportive husband Dave - who always knew she could fly.

THE DRAGON PLAY CAST

Liz Fisher (Woman)

This is Liz's first collaboration with Shrewd. She was last seen onstage as Yelena in Breaking String's production of UNCLE VANYA. Other recent credits include: Breaking String's THE CHERRY ORCHARD (Austin Theatre Examiner for Best Featured Actress, B. Iden Payne Nomination for Outstanding Supporting Actress) and THE SEAGULL (Austin Critics' Table nomination). Liz also starred in Capital T's productions of A LIE OF THE MIND, HUNTER GATHERERS and DYING CITY (Best Actress ATL Applause Awards, BIP Nomination for Outstanding Leading Actress); Hyde Park Theater's BOMBS IN YOUR MOUTH (BIP nomination, Austin Critics' Table nomination) FEATURING LORETTA (BIP nomination, Austin Critics' Table nomination), HUMANS, and PILLOWMAN; MINUS TIDE (BIP nomination) for the Rude Mechs and Bayou Radio; Austin Playhouse's DUG UP; Austin Shakespeare's MACBETH and DOG IN THE MANGER (BIP nomination); HBMG Foundation's STROKE. Film credits include THE HAPPY POET (screened at the Venice Film Festival), HOLY HELL, THE SPECIAL, THE REMNANTS OF CIVILIZATION & THE DAWN OF ANXIETY, NIGHTLIFE, and SIX MINUTES.

Joseph Garlock (Dragon/Loserboy)

Joseph is proud to be a part of his first Shrewd. Other Austin credits include MUCH ADO ABOUT NOTHING and THE WINTER'S TALE (Present Company), LOST LAND (Wogglebug), LEAR (Vortex), and THE SERVANT OF TWO MASTERS (Penfold). Nationally, favorite credits have included two tours with Montana Shakespeare in the Parks, the world premier of HEAT WAVE (Pegasus Players, Chicago), and two seasons with Summer Shakespeare at Notre Dame. He thanks Perckle for her love and patience, Shannon for making him a part of this incredible cast, and Jim Michael Verda for teaching him to fly.

Xander Slay-Tamkin (Boy)

This is Xander's first production with Shrewd. He most recently appeared in the award-winning THE PHYSICIST for Vortex Summer Youth Theatre, for which he received a B. Iden Payne nomination for Outstanding Youth Performance. Other credits include THE FULL MONTY (Arts on Real) and TROADES (Vortex Repertory), THE SCHOOL FOR SCANDAL for Scandal and ROSSUM'S UNIVERSAL ROBOTS (Vortex Summer Youth Theatre), and Four by Five's upcoming release of the short film A QUIET GIRL'S GUIDE TO VIOLENCE.

Rommel Sulit (Man)

Rommel is a stage and screen actor with recent credits as Munir in Gabriel Jason Dean's BACHA BAZI (UT New Theatre Festival), Jeff Kling in Jason Wells' MEN OF TORTUGA (Street Corner Arts) and Constantine in Charles Mee's BIG LOVE (Shrewd Productions). He will be seen in The Hidden Room's forthcoming production of Edward Hall's ROSERAGE. He trained at the School at Steppenwolf and is one-third of Street Corner Arts. Much thanks and love to this wonderful cast and crew (especially Shannon and Jenny) all of whom he is proud and grateful to count among his colleagues and friends. He extends a special PBR toast to "Man" and all his quietly enduring counterparts throughout the homeland.

Amelia Turner (Dragongirl)

Amelia is originally from Shreveport, LA and has been performing since she was 10 years old. She graduated from The College of Santa Fe with a BA in Theatre and Minor in Religious Studies. She is the founder and Artistic Director of Biophilic Productions, Production Manager and a principle performer for Austin Mime Theatre, and a makeup artist. She most recently directed and produced an original rock musical, EYE INSIDE in Chicago, IL, and was last seen in LEAR at the Vortex, directed by Rudy Ramirez. Amelia would like to thank the cast and production team of THE DRAGON PLAY for creating an amazing experience, Shannon Grounds for seeing her inner dragon, Jenny Connell for sharing her beautiful modern myth with us, and her grandma Ro for her continued love and support.

THE DRAGON PLAY CREW**Patrick Anthony (Lighting Designer)**

Patrick has been designing lights in Austin, Texas for two years. He graduated Loyola University: New Orleans with a BA in theatre, and promptly moved back home. The Dragon Play is his second show with Shrewd Productions, and he is thrilled to be working on such a beautiful and powerful piece. He is a member of the Vortex Repertory Company, and has designed lights for Sky Candy, Uprise Productions, and Austin Shakespeare.

Katherine Beamer (Stage Manager)

Katherine is a Graduate of Texas State where she received her BFA in Performance and Production. Previous stage management credits include OKLAHOMA! (SM), John Boulanger's new play DOWN THE DRAIN, A YEAR WITH FROG AND TOAD (ASM), AS YOU LIKE IT (ASM), and ELECTRA (SM) in which she received the KCACTF National Award for Stage Management. She would like to thank everyone in this production for letting her in with open arms/wings.

Gunn Bros. (Sound Design)

Jimmy and Gordon have been creating theatrical sound designs in Austin, Texas since the mid eighties. They have been Resident Sound Designers for Capitol City Playhouse, The State Theater, and the Austin Playhouse. Along the way they have garnered eight B. Iden Payne, and two Critic's Table awards for Outstanding Sound Designs.

T. Lynn Mikeska (Composer)

T. Lynn is a founding member and former Co-Artistic Director of Shrewd Productions. Now residing in Los Angeles, Lynn is hard at work acting, producing, and writing for the screen, as well as developing songs for her soon-to-be-released, debut CD. Lynn's credits with Shrewd include playing the voice of Time in THE LONG NOW (Austin Theatre Examiner nomination for Best Supporting Actress) and her original music for THE LONG NOW (B. Iden Payne nomination for Best Original Score). She also composed the majority of the music and played the title role in the rock musical IO: A MYTH ABOUT YOU, played Juliet/Anne in WHERE ARE THEY NOW? (Austin Critic's Table nomination), and appeared in and co-produced XMAS UNWRAPPED, TRASH ANTHEMS, and CHEATER, amongst others.

Kimberley Mead (Photographer & PR)

As both an artist and performer, Kimberley has a unique eye and relationship with the story which creates emotional images that intrigue and entice. As a photographer she has worked with Shrewd Productions, Austin Shakespeare, The Vortex, Sky Candy, Penfold Theatre, and Hidden Room Theatre amongst others. Her acting highlights include Andromache in TROADES (Vortex), MUSES (Vestige Group) and was most recently as Clytemnestra in AGAMEMNON (City on a Hill). She has a BA in Photography and a MA in Counseling. It may be an unusual collection of interests but it seems natural when you realize that these disciplines are about connection, personal stories, and emotions.

Melinda Parr (Stage Manager & Sound Board Operator)

This is Melinda's second show with Shrewd Productions. Other favorites include: FOOTLOOSE, Annie, THE MUSIC MAN, THE SECRET GARDEN, ANNIE GET YOUR GUN and BEAUTY AND THE BEAST with Zilker Theatre Productions; FLOYD COLLINS and TOME with Scott Schroeder Presents; PLAYS WELL WITH OTHERS at Zach; BIG RIVER, CAROUSEL, and DAMN YANKEES at The Paramount and School House Rock with TexARTS; ARCADIA, HAMLET, MAN AND SUPERMAN, ANTHEM, THE TEMPEST, THE DREAM: A MIDSUMMER NIGHT'S DREAM, MARY STUART, SPOOKY SHAKESPEARE, and MEASURE FOR MEASURE with Austin Shakespeare.

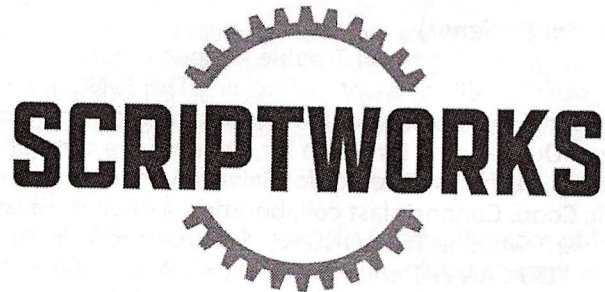
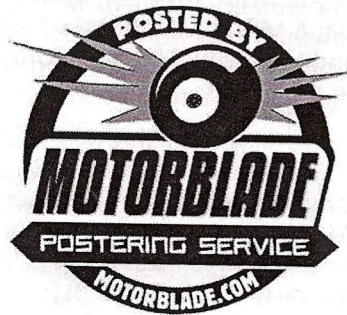
Michael Slefinger (PR)

Michael is so excited to be working with Shrewd Productions again! Most recently, he appeared as "Giuliano" in Shrewd's BIG LOVE at the Rollins Theatre, and sustained only minor injuries while ribbon-dancing as "Emory" in their remount of MILKMILKLEMONADE. Other prior credits include: his one-man show, PURGATORY FOR PANSIES, which was named "Best of the Fest" at the 2011 FronteraFest; as the Apartment in CRUMBLE: LAY ME DOWN, JUSTIN TIMBERLAKE (Poison Apple Initiative); and he can be seen each month at the ND at 501 Studios as a Regular Cast Member in THE ENCYCLOPEDIA SHOW, which he co-produces. Favorite past roles include Boy, Young Boy, and The Kid.

Connor Hopkins (Set Designer)

Connor is the Founder and Janitor of Trouble Puppet Theater Company, whose productions of FRANKENSEIN and Upton Sinclair's THE JUNGLE Jungle have won five B Iden Payne Awards, including Outstanding Production of a Drama for FRANKENSEIN and Outstanding Direction for each. He is a company member of Shrewd Productions, Technical Director for Salvage Vanguard and Co-Founder of the Austin Scenic Coop. Connor's last collaboration with Shrewd was designing the set for the award-winning THE LONG NOW. Other recent credits include CIVILIZATION: ALL YOU CAN EAT and AN EXTRAORDINARY BIRTH OF RABBITS for Salvage Vanguard, and Glass Half Full Theatre's ORCHID FLOTILLA.

Special Thanks to: Austin Scriptworks, Austin Shakespeare, The Austin Theatre Alliance and Anne-Marie McKaskle, Jason Amato, Jennifer Davis Lana Dieterich, Fireball Whiskey, Jenny Gravenstein, Harvey Guion, Anne Hulsman, Nathan Jerkins, Kids Acting, Dane Krager, Ellie McBride, Talena Martinez, Kimberley Mead, Minuteman Press, Christina J. Moore, Motorblade Postering Service, Bernadette Nason, Meredith Parr, Shannon Richey, Jennifer Rogers, Justin Scalise, Michael Slefinger, Andrea Smith, Jody Steele, M. Scott Tatum & MAC Theatre, Tito's Vodka, Vortex Repertory Company, Rachel Wiese, Zach Theatre, and Zilker Theatre Productions.



The Dragon Play is presented with the assistance of Script Works through their
Finer Point Fund for New Play Production.

ABOUT SHREWD PRODUCTIONS

Shrewd Productions is committed to creating theatre that is well-produced, thoughtful, provocative, and entertaining; concentrating on women's voices, new plays, and work developed through a collaborative artistic approach.

Shrewd's past productions include the world premieres of *Where Are They Now? A Fantasy Based on a True Crime* by Cyndi Williams, *Stillborn: a bedtime story* and *Io: a myth about you* by Monika Bustamante, *Cheater*, a creation by ten playwrights from Austin and beyond, and *The Long Now* by Beth Burns, the original collaborations *Xmas Unwrapped*, *Camp Shrewd*, and *Feast of Fools*, and the regional premieres of *Trash Anthems* by Dan Dietz, *Kidnapped by Craigslist* by Katie Goan and Nitra Gutierrez and *MilkMilkLemonade* by Joshua Conkel. Shrewd has been honored with thirty award nominations for their productions and seven awards by the Austin Critic's Table, the B. Iden Payne committee and the Austin Theatre Examiner, including wins for Best Production of a Drama, Best Original Script, Outstanding Makeup Design, and Best Lead and Supporting Actor performances in a Musical, Drama and Comedy. Shrewd's last production was Charles Mee's **Big Love**, directed by Robert Faires at the Rollins Studio Theatre in November, which recently received accolades for Best Direction and Best Lead Actress in a Comedy.

Shrewd is...

Artistic Director: Shannon Grounds

Founding Shrewds: Monika Bustamante and T. Lynn Mikeska

Company Members: Elena Araoz, Kristen Bennett, Jerry Joe Benson, Shawn Ferrell, Kathleen Fletcher, Jason Hays, Connor Hopkins, Anne Hulsman, Melissa Livingston, Marisa Pisano, Mike Slefinger and Bryan Schneider

Advisory Board Members: Christopher Dove, Christina J. Moore, Ken Webster and Cyndi Williams



Keep up with Shrewd Productions
by visiting our website at
www.shrewdproductions.com!

Sign up for our newsletter
and find out how you can support
new work in Austin!