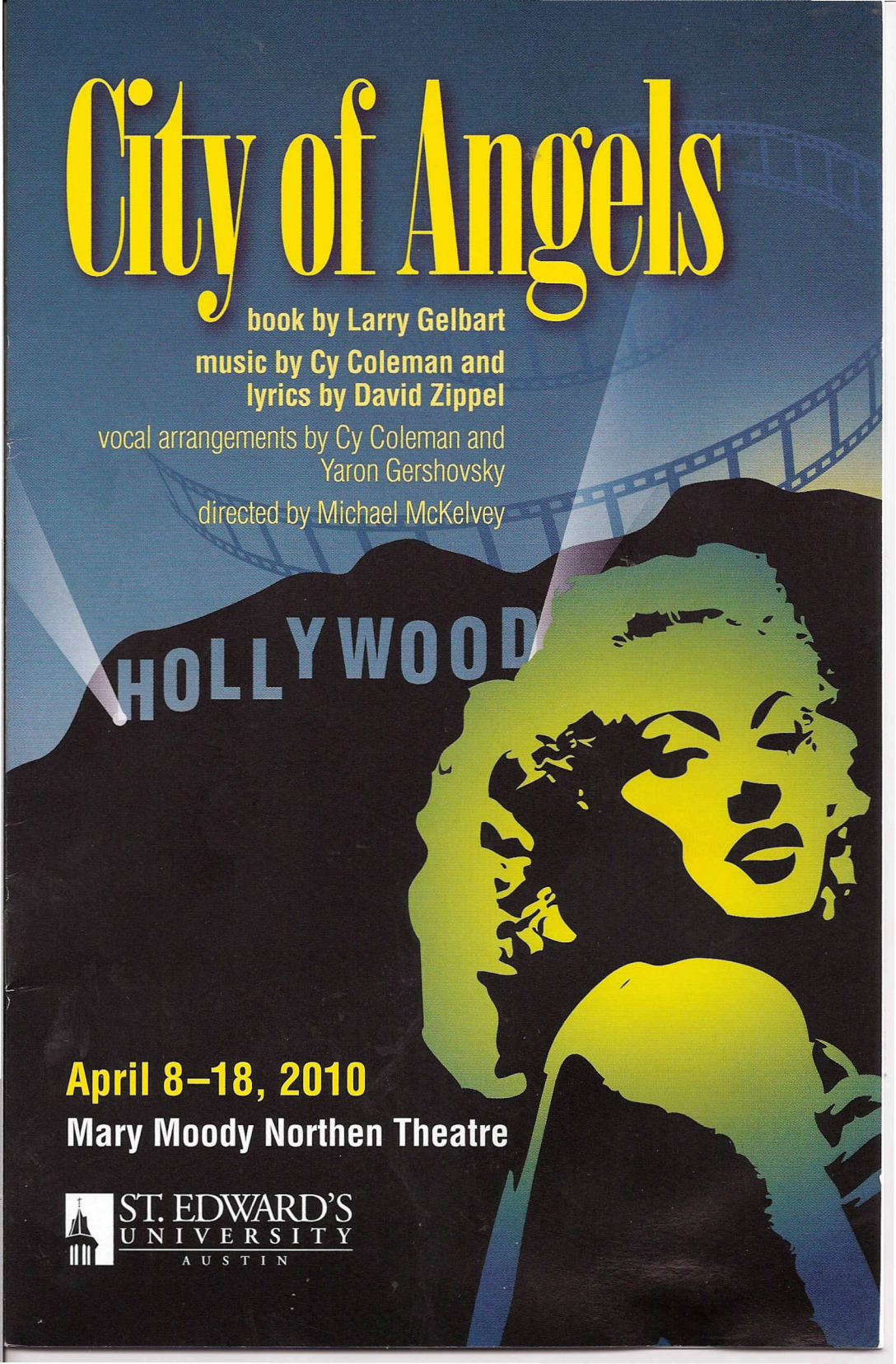


City of Angels



book by Larry Gelbart

music by Cy Coleman and
lyrics by David Zippel

vocal arrangements by Cy Coleman and
Yaron Gershovsky

directed by Michael McKelvey

HOLLYWOOD

April 8–18, 2010

Mary Moody Northen Theatre



ST. EDWARD'S
UNIVERSITY
AUSTIN

ST. EDWARD'S UNIVERSITY THEATER ARTS STAFF AND FACULTY

Dean, School of Humanities Father Louis T. Brusatti
 Artistic Director/Assistant Professor David M. Long
 Managing Director/Adjunct Instructor Michelle S. Polgar
 Area Coordinator/Assistant Professor Ev Lunning Jr.
 Director of Musical Theater Michael McKelvey
 Administrative Coordinator Angela Flowers
 Costume Shop Manager/Adjunct Instructor T'Cie Mancuso
 Technical Director Joe Carpenter
 Master Electrician Austin Sheffield
 Costume Technical Specialist Michelle Heath
 Assistant Professor Sheila Gordon
 Adjunct Instructors Brooks Barr
 Tara Cooper
 Bhagirit Crow
 Kathy Dunn Hamrick
 Lisa Laratta
 Bill McMillin
 Margita Penčevová
 Jo Ann Schatz
 Gary M. van der Wege

SPECIAL THANKS

Austin Lyric Opera
 Austin Shakespeare
 Father Louis T. Brusatti
 Carol Caruthers
 Sarah Garcia
 Connor Hopkins
 Sister Donna Jurick, SND
 Kruger's
 Ladies of Charity/Lakeway Thrift Store
 George E. Martin
 Lisa Raymond
 Relic Source/Adam Woolley
 Liz Rische
 The Rude Mechanicals
 St. Edward's University Marketing Office
 Texas State University Theatre Department
 UT-Austin Department of Theatre and Dance
 Zilker Theatre Productions

City of Angels

book by Larry Gelbart

music by Cy Coleman and lyrics by David Zippel

vocal arrangements by Cy Coleman and Yaron Gershovsky

MICHAEL MCKELVEY

DIRECTOR

LEILAH STEWART

SCENE DESIGNER

TONY TUCCI

LIGHTING DESIGNER

JEN J. MADISON

COSTUME DESIGNER

CRAIG BROCK

SOUND DESIGNER

CHARLI BRATH

MAKE-UP/HAIR DESIGNER

MICHAEL MCKELVEY

MUSIC DIRECTOR/CONDUCTOR

**DANNY HERMAN &
ROCKER VERASTIQUE**

CHOREOGRAPHERS

SHANNON RICHEY*

PRODUCTION STAGE MANAGER

SARAH GAY*, JAMIE GOODWIN*

& DAVID M. LONG*

EQUITY GUESTS



MEDIA SPONSORS



< kut 90.5
AUSTIN TEXAS

April 8–18, 2010

City of Angels is produced by special arrangement with, and the music and dialogue material furnished by, Tams-Whitmark Music Library, Inc. 500 Lexington Avenue, New York, NY 10022

The Company

Stone, Stine's creation, private eye	David M. Long*
Stine, a fiction writer	Jamie Goodwin*
Gabby, Stine's wife/Bobbi, Stone's ex-wife	Sarah Burkhalter**
Donna, Buddy's secretary/Oolie, Stone's secretary	Kimberly Gates**
Buddy Fidler, movie producer/Irving S. Irving, movie mogul	Jacob Trussell**
Carla Haywood, Buddy's wife/Alaura Kingsley	Sarah Gay*
Werner Kriegler/Luther Kingsley	Duncan Coe**
Avril Raines, a starlet/Mallory Kingsley, Alaura's stepdaughter	Steffanie Ngo-Hatchie**
Pancho Vargas/Lieutenant Munoz	Jon Wayne Martin**
Jimmy Powers	Christopher Smith**
Angel City Four	Michelle Elisabeth Brandt**, Elizabeth Newchurch**, Nathan Brockett**, Andrew Butler**
Gilbert, Mahoney, Del, Ensemble	Tyler Mount**
Pasco, Shoeshine Boy, Ensemble	Johnny Joe Trillayes**
Sonny, Ensemble	Matthew Frazier**
Big Six, Ensemble	Kyle Housworth**
Clapper Girl, Ensemble	Sophia Franzella**
Margaret, Lydia, Ensemble	Evangeline Jimenez**
Anna, Jean, Ensemble	Marett Hanes**
Cocktail Waitress, Ensemble	Cassidy Schlitz**

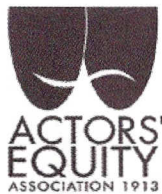
THERE WILL BE ONE 15-MINUTE INTERMISSION.

*** Member, Actors' Equity Association, the union of professional actors and stage managers in the United States**

**** Equity Member Candidate**

ACTORS' EQUITY ASSOCIATION (AEA), founded in 1913, represents more than 45,000 actors and stage managers in the United States. Equity seeks to advance, promote and foster the art of live theater as an essential component of our society. Equity negotiates wages and working conditions, providing a wide range of benefits, including health and pension plans. AEA is a member of the AFL-CIO and is affiliated with FIA, an international organization of performing arts unions. The Equity emblem is our mark of excellence.

www.actorsequity.org



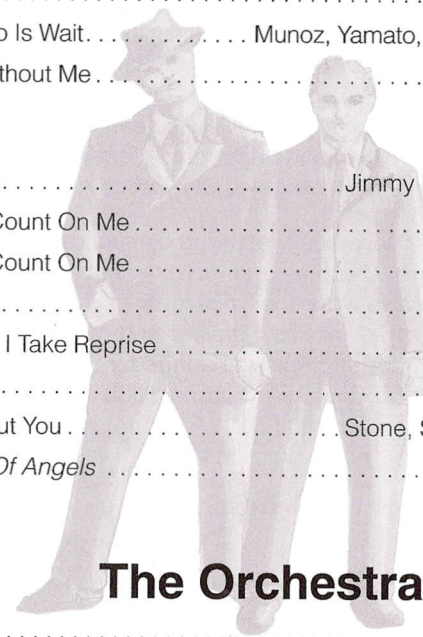
Musical Numbers

ACT I

Prologue	Theme from <i>City Of Angels</i>
Double Talk	Stone and Alaura Kingsley
Double Talk	Buddy Fidler and Stine
What You Don't Know About Women	Gabby and Oolie
Ya Gotta Look Out For Yourself	Jimmy Powers and Angel City Four
The Buddy System	Buddy Fidler and Donna
With Every Breath I Take	Bobbi
The Tennis Song	Stone and Alaura Kingsley
Ev'rybody's Gotta Be Somewhere	Stone and Angel City Four
Lost And Found	Mallory Kingsley
All You Have To Do Is Wait	Munoz, Yamato, Mahoney and Officer Pasco
You're Nothing Without Me	Stine and Stone

ACT II

Stay With Me	Jimmy Powers and Angel City Four
You Can Always Count On Me	Oolie
You Can Always Count On Me	Donna
It Needs Work	Gabby
With Every Breath I Take Reprise	Stone and Bobbi
Funny	Stine
I'm Nothing Without You	Stone, Stine, Gabby and Company
Theme from <i>City Of Angels</i>	Orchestra



The Orchestra

Conductor	Michael McKelvey
Keyboards	Susan Finnigan, Erik James
Reeds	Joey Colarusso, Paul Baker, Dan Torosian
Trumpet	Mike Piccione, Kurt Kumme
Trombone	Jeff Freeman
Bass	George Fahlund
Percussion	Trevor Detling

About The Writers

Cy Coleman, Larry Gelbart and David Zippel

The dynamic trio behind *City of Angels* marks a formidable alignment of theatrical prowess.

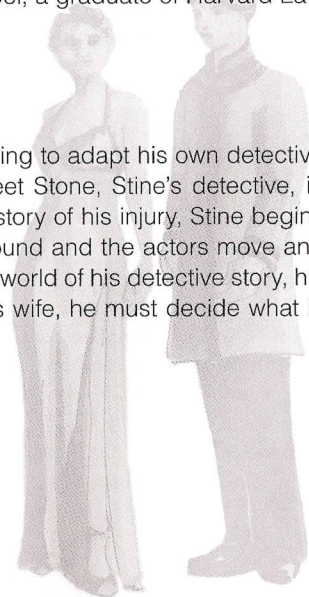
Composer Cy Coleman has churned out decades of hit musical scores, starting in 1962 with *Wildcat*, which brought Lucille Ball to her first starring role on Broadway. Subsequent hits include *Sweet Charity*, *Barnum*, *City of Angels* and *The Will Rogers Follies*, among others. He began his music career early, playing Carnegie Hall before his tenth birthday. His pre-Broadway career includes writing hits such as *Witchcraft* and *The Best Is Yet to Come*. He is an accomplished film score writer, a Grammy Award winner and a 1994 recipient of a Doctorate in Music from Long Island University.

Writer Larry Gelbart may be best known for his many years as a writer for the hit TV series *M*A*S*H* (he wrote 97 episodes), but his writing credits began much earlier — he became a professional comedy writer before finishing high school. He has written skits for Bob Hope, Red Buttons, Sid Caesar and Imogene Coca. His Broadway writing credits include *A Funny Thing Happened on the Way to the Forum* and *Sly Fox*, an adaptation of Ben Johnson's *Volpone*. His screenplay credits include, among others, *Oh, God* and *Tootsie*, which earned him an Academy Award nomination and Best Screenplay honors from the Los Angeles Film Critics Association.

Lyricist David Zippel's songs have been recorded by such greats as Stevie Wonder, Mel Tormé, Christina Aguilera, Cleo Laine and Ricky Martin. *City of Angels* was his Broadway writing debut. He also wrote the lyrics for the Broadway musical version of *The Goodbye Girl* and for Disney movies *Hercules* and *Mulan*. He collaborated with composer Andrew Lloyd Weber to create the songs for the musical *The Woman in White*. He is the recipient of the Tony Award and multiple Academy Award, Grammy Award and Golden Globe Award nominations. Mr. Zippel, a graduate of Harvard Law School, "is delighted," he says, "not to practice law."

City of Angels

The story follows Stine, a fiction writer in Hollywood trying to adapt his own detective novel into a screenplay. As the action begins, we meet Stone, Stine's detective, in the hospital with a bullet wound. As Stone relates the story of his injury, Stine begins to rewrite his story. As he rewrites, the "movie" is rewound and the actors move and speak backward. As Stine buries himself in the fantasy world of his detective story, his personal life begins to fall apart. Faced with losing his wife, he must decide what is really important in his life.



Production Staff

Assistant to the Director	Elena Weinberg
Assistant Technical Director	Scott Guthrie
Assistant to the Scenic Designer	Katie Andries
Assistant to the Lighting Designer and Master Electrician	Kris Carpenter
Assistants to the Make-up/Hair Designer	Brooke Friesen, Lisa Raymond
Fight Choreographer	David M. Long
Assistant to the Fight Choreographer	Sesar Sandoval
Fight Captain	Elena Weinberg
Stage Management Mentor	Bill McMillin
Lead Stage Manager	Cassandra Castillo**
Assistant Stage Managers	Jessica Angima**, Lora Blackwell**, Genevieve Castillo**, Ashley Kramer**, Ian Stillwell**, Stacy VanderVorst
Student Assistant to the Technical Director	George Marsolek
Properties Mistress	Rachel Magee
Properties Lead Assistant	Jackie Harper
Properties Design and Construction	Sarah Burkhalter, Nicholas Compagna, Kaleb Dworsky, Chad Duda
Make-up/Hair Design Mentor	Tara Cooper
Stage Crew	Students of THAR 1330
Follow Spot Operators	Students of THAR 1330
Assistant to the Master Electrician/Board Operator	Lainey Murphy
Assistant to the Sound Designer/Board Operators	Elliott Dooley, Candice Rogers
Sound Department Staff	Christopher Smith
Scene Shop Staff	Katie Andries, Cameron Allen, Joseph Leudecke, George Marsolek, Candice Rogers, Carli Werner
Costume Shop Staff	Kera Blay, Kiara Brynne, Jordyn Campbell, Eileen Chaffer, Emily Donald, Reetah Gonzalez, Aidan Liller, Meredith Montgomery, Helen Ralowicz
Stitchers	Aimee Kandl, Tanya Olande
Box Office Staff	Shannon Bishop, Alyssa Johnson, Jon Wayne Martin, Kel Sanders, Christopher Smith
House Manager	Lauren Prater
House Crew	Devon Brownlo, Kenny Dolin, Meredith Montgomery, Mario Ramirez, Zorica Simic
Head Dresser	Katie Comardo
Dressers	Claire Carden, Stuart Carter, Mary Cartwright, Katelyn Davis, Emily Eubank, Andi Schrock, Avery Ferguson, Sigrid Jaimes
Laundry	Matthew Garcia, Mitchell Harris, Kari Strunk
Costume Crew	Andrew Butler, Kimberly Gates, Marrett Hanes, Jordyn Campbell, Avery Ferguson, Kari Strunk, Katie Comardo, Stacy VanderVorst and the students of THAR 1331
Scenic Crew	Cassandro Castillo, Mary Cartwright and the students of THAR 1330
Make-up/Hair Crew	Brenna Batson, Devon Ray, Olivia Vescovo
Lighting Crew	Michael Davis, Emily Donald, Erin Flemming, Johnny Joe Trillayes, Christina Smith and the students of THAR 1330

The Company

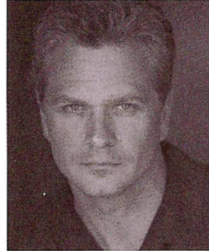
SARAH GAY (*Carla/Alura Kingsley*) is



thrilled to be working with the students and staff of St. Edward's for the first time. In the past year she has been seen in *John & Jen* (Penfold), *The Cherry Orchard*

(Breakin' String), *Three Days of Rain* (Penfold), and *The Grapes of Wrath* (Zach Theatre). Some favorite Canadian credits include *As You Like It* (CanStage), *Cabaret* (New Yorker, Toronto), *Seussical* (Carousel Theatre), and co-producing and appearing in the Jessie-award-winning musical revue *The World Goes 'Round* at Pacific Theatre. She would like to extend special thanks to Michelle for helping to make this happen and to her husband Colin for his endless love and support.

JAMIE GOODWIN (*Stine*) returns to



MMNT after his role in this fall's production of *bobrauschenbergamerica*. He has been seen locally at Zach Theatre in *Shooting Star*, *Doubt*, *An Almost Holy Picture*, *Present Laugh-*

ter, and *Urinetown*. He is best known for his role as Johnny Bauer on CBS's daytime drama *Guiding Light* and as Kevin Anderson on NBC's *Another World*. Others may recognize him as one of Samantha's beau's on *Sex and the City*. Other television: *Ed*, *Third Watch*, *Hack*, *Law & Order*, *Law & Order SVU*. Film: *Serendipity* (Nick Roberts), *Let It Be Me* (Bud) and *The Perfect You*. Off Broadway: New York Shakespeare Festival's *Two Gentlemen of Verona* (Valentine), Public Theatre's *Julius Caesar* (Marullus), *Twelfth Night* (Orsino). Regional: *Gross Indecencies* (Oscar

Wilde), *Unsinkable Molly Brown* (Johnny Brown), *Seven Brides for Seven Brothers* (Adam). He will also be seen in Zach Theatre's upcoming production of *The Drowsy Chaperone* as Aldolpho. Jamie received his M.F.A. in Acting at SMU's Meadow's School of the Arts.

DAVID M. LONG (*Stone*, MMNT Artistic



Director) is an actor, director and educator who has worked professionally on both coasts and in Japan. David has served as a faculty member at Winthrop University in South Carolina

and Portland State University in Oregon and currently serves as artistic director and assistant professor of Theater Arts at St. Edward's University. Directing credits at MMNT include *bobrauschenbergamerica*, *Cloud 9* (Austin Critics' Table Nomination for Best Comedy), *Full Circle* (Austin Critics' Table Award for Best Comedy), *Macbeth* and *Antigone*. At MMNT he has appeared as Cyrano (Austin Critics' Table Award) in *Cyrano de Bergerac* and as Leo Frank in *Parade*. David has presented acting and movement workshops throughout the country. He is an active member in both Actors' Equity Association and the Screen Actors' Guild. He would like to thank Tracy, Amelia and Alura for their patience and loving support.

MICHELLE ELISABETH BRANDT '11

(*Angel City Four Alto*, *Margie*) is a Theater Arts major with an emphasis in performance and a Music minor and is also a founding company member of DA! Theatre Collective here in Austin. Her favorite credits around town include Lorraine in *Leave it to Beverly* and Heron in *Heron and Crane*. At St. Edward's, she has been seen as the featured dancer in *On the Town* and recently served as the chore-

ographer for the production of *Peer Gynt*. Michelle would like to thank her family, friends, Mike and Dave for their constant love and support.

NATHAN BROCKETT '11 (*Angel City*

Four) feels grateful to be sharing the experience of this show with this cast and crew. Recently, Nathan appeared in SummerStock Austin's Production of *Sweeney Todd: The Demon Barber of Fleet Street* and has been seen in *Three Sisters* (Solyony), *bobrauschenbergamerica* (Wilson), *The Life of Galileo* (various ensemble) and *Peer Gynt* (various ensemble). He would like to thank all of his inspiring peers and mentors.

SARAH BURKHALTER '10 (*Gabby/*

Bobbi) This is Sarah's final MMNT performance. She previously appeared in *Macbeth*, *Full Circle*, *Cyrano de Bergerac*, *Cloud 9* (B. Iden Payne Nomination), *The Pajama Game*, *bobrauschenbergamerica* and *Peer Gynt*. After graduation, Sarah plans to pursue theater in the bright lights of some big city somewhere. A very special thanks to her family for their blind support, her lovely friends for all the life lessons and happy hours, and Dr. McKelvey for trusting and challenging her with this incredible role.

ANDREW BUTLER '10 (*Angel City*

Four) is pleased to once again perform on the MMNT stage. A senior Theater Arts student, he has enjoyed performing both in St. Edward's productions and with the Transit Theatre Troupe, of which he is a founding member. Some of his prior productions include *Three Sisters* and *The Life of Galileo* (MMNT), *Assassins* (SummerStock Austin) and *Revenge of The Space Pandas* (Il Teatro Nostro). Andrew sends all his love and gratitude to his family and his friends for their unyielding support in his pursuit of the arts.

DUNCAN COE '10 (*Werner/Luther Kingsley*)

is excited to return to the arena. Previous acting credits at MMNT include *Peer Gynt*,

The Life of Galileo, *bobrauschenbergamerica*, *Cyrano De Bergerac*, *Kneeling Down at Noon*, *Durang/Durang* and *A Midsummer Night's Dream*. In 2008 he co-wrote and performed in *Sad, Sad, Sad* at the NYC International Fringe Festival. He would like to thank Mike for the experience and Elena for the love.

SOPHIA FRANZELLA '13 (*Ensemble*) is

excited to be returning to the MMNT stage after making her debut in the St. Edward's production of *Peer Gynt*. Sophia has enjoyed performing in a Transit Theatre Troupe show and a senior-directed 10-Minute Play, as well as becoming a member of Omni Singers. She would like to thank Mike for this opportunity and her family for their support.

MATTHEW FRAZIER '12 (*Sonny,*

Ensemble) is ecstatic to make his return to the MMNT stage. Most recently, he was seen in the 10-Minute Play Festival. Past MMNT credits include *Cyrano de Bergerac* and *The Pajama Game*. He would like to thank Mike for this opportunity, as well as his friends and family for laughing at his bad jokes. This one is for LP.

KIMBERLEY GATES '10 (*Donna/Oolie*) is

thrilled to work with Mike and the rest of the amazing cast on this jazzy gem of a show. She returns to the MMNT stage having previously appeared as Anitra in *Peer Gynt*. Endless thanks to Mike for believing in her, the cast and crew for their enthusiasm, and her mother for her constant love and support. This is for her sister Georgia who loved musicals and always sang along from the audience.

MARETT HANES '12 (*Anna, Gene,*

Ensemble) is a Theater Arts major with an emphasis in musical theater, and a very peppy St. Edward's tour guide. She is very excited to be making her MMNT debut in *City of Angels*. She was last seen in SummerStock Austin's production of *Little Shop of Horrors* as Ronnette. Thanks to Mike for this wonderful opportunity.

KYLE HOUSWORTH '12 (*Big Six, Ensemble*) is making his second appearance on the MMNT stage after *The Pajama Game* last season. He is currently majoring in Theater Arts with an emphasis in arts administration. He would like to extend his love to the cast and crew for making this an amazing experience! Many thanks to Mike for everything he continues to bring to the program, and to mom, for all her love and support.

EVANGELINE JIMEMEZ '10 (*Margaret, Lydia, Ensemble*) has appeared in *The Life of Galileo*, *The Pajama Game*, *Cyrano de Bergerac*, *Three Sisters*, *On the Town*, *Death & the King's Horseman* and *Ring 'Round the Moon* at MMNT. This is her last show before she graduates from St. Edward's in May with a major in Theater Arts (acting emphasis) and a double minor in Music and Psychology. She thanks the entire cast and crew, especially Mike, for a great experience, and her loving parents for their love and support.

JON WAYNE MARTIN '11 (*Vargas/ Munzo*) is a junior acting student. He has been seen in *bobrauschenbergamerica*, *Cloud 9*, *Cyrano de Bergerac*, *The Pajama Game* and *On the Town*. He studies contemporary and classical voice with Dr. McKelvey. He would like to thank MK, Christina and Ozymendius.

TYLER MOUNT '12 (*Gilbert, Mahoney, Del, Ensemble*) is excited to be making his main stage debut at MMNT. This season he has contributed his technical expertise to *bobrauschenbergamerica* and *The Life of Galileo*, and served as lead stage manager for *Peer Gynt*. His vocal experience spans over ten years and includes performances with Josh Groban at the SuperBowl XXXVII Pre-Game Show and at Carnegie Hall in NYC. He would like to thank Mike for his patience and the opportunity!

ELIZABETH NEWCHURCH '11 (*Angel City Four Soprano, Bootsie*) is thrilled to be performing for the second time with MMNT. Liz has worked with Zilker Theatre Productions, Austin Musical Theatre, Broadway Texas, Austin Playhouse and MAC Theatre. She would like to thank her friends and family. A special thanks to Matt for his constant love and support.

STEFFANIE NGO-HATCHIE '10 (*Avril Raines/Mallory Kingsley*) will be graduating in May 2010 with her degree in Theater Arts with a performance emphasis. Steffanie studies voice with Michael McKelvey. Recent roles at MMNT include Virginia in *The Life of Galileo* and Phil's Girl in *bobrauschenbergamerica*. Her other theater credits include *Orestes* (Iphigenia) with Cambiare Productions, *The Fantasticks* (Luisa) with Austin Playhouse, and several other shows at MMNT, including *Cyrano de Bergerac* (Food Seller/Sister Claire), *Three Sisters* (Irina) and *Full Circle* (Translator/Rock Singer). She is a choral member and soloist of St. Edward's Omni Singers and Madrigal Choir, and was the soprano soloist in the St. Edward's University Music Program's performance of Fauré's *Requiem* last spring.

CASSIDY SCHLITZ '12 (*Cocktail Waitress, Ensemble*) previously appeared in *The Pajama Game* at MMNT. Cassidy is a Theater Arts major and a Business Administration minor. Apart from theater, she is involved in the St. Edward's Madrigal Choir.

CHRISTOPHER SMITH '10 (*Jimmy Powers*) is a senior Theater Arts major here at St. Edward's and will be graduating in May. His favorite roles at MMNT include Andrea in *Life of Galileo*, Phil the Trucker in *bobrauschenbergamerica*, Betty/Gerry in *Cloud 9* and Christian in *Cyrano de Bergerac*. He would like to thank Mike for this chance. He has enjoyed the opportunity to work with such a phenomenal cast and crew.

JOHNNY JOE TRILLAYES '12 (*Pasco, Shoeshine Boy, Ensemble*) is humbled to make his MMNT debut in *City of Angels*. He would like to thank Michael McKelvey for allowing him to share his first show with such a talented cast and crew, Bill McMillin for his endless support and Melissa Reyna for her shoulder to cry on. Lastly, he wants to thank his mother and sister for never forgetting to say "I'm proud of you" every single day — he'd be nothing without them.

JACOB TRUSSELL '10 (*Buddy/Irving*) is thrilled to be returning to the MMNT stage in his final semester. He appeared most recently as the lead in *Peer Gynt*. Last season he appeared in *Cloud 9* and *Cyrano de Bergerac*. He is a company member of DA! Theatre Collective, where he has been seen recently playing with a scarf and a pixie in their productions of *Direct Object* and *Leave It to Beverly*. Other recent work includes *Sweeney Todd* for SummerStock Austin (B. Iden Payne Award Nomination) and *The Fantasticks* (Austin Playhouse). Thanks to Mike and everyone at MMNT for making this a smashing swan song. Namaste!

DANNY HERMAN (*Choreographer*) is an internationally recognized director, choreographer, actor and teacher. Mr. Herman appeared in the original Broadway and Off-Broadway productions of *Contact* and was Mike Costa on Broadway in *A Chorus Line*. He also appeared in the original Broadway production of *Leader of the Pack*, the original New York City Opera production of *Die Soldaten* and the original Off-Broadway production of *Big Bad Burlesque*. He was in the first national tour of *Song and Dance*, toured Europe in *Broadway Tonight*, was featured in the Chicago company of *Sophisticated Ladies* and began his career as the Purple Panda on *Mister Rogers' Neighborhood*.

ROCKER VERASTIQUE (*Choreographer*) appeared in the original Broadway

companies of *Contact*, *Chicago*, *Victor! Victoria* and *Carousel*. His other Broadway credits include *Miss Saigon*, *Phantom of the Opera* and *Ziegfeld Follies of 1936*, as well as the world premiere productions of *Heart's Desire*, *Jekyll and Hyde*, *Spirit* and the Broadway workshop of *Fosse*. Rocker's other credits include Paul in *A Chorus Line*, Konstantine Morrisine in *On Your Toes*, *Sophisticated Ladies*, Feld Ballet, Los Angeles Chamber Ballet, six years with the American Ballet Theatre, the television pilot and four years on the television series *Fame*, and the male lead in the award-winning music video, *Nasty*, opposite Janet Jackson.

CHARLI BRATH '11 (*Make-up/Hair Designer*) makes her design debut on this production. Before attending St. Edward's, Charli completed the cosmetology program at Baldwin's Beauty School. Many of her haircuts have been seen on the MMNT stage. You may have also seen her work as assistant make-up designer for *The Pajama Game* and *The Life of Galileo*. Charli was on the make-up and wig crew for *Full Circle*, *Ring 'Round the Moon* and *Cloud 9*. She would like to thank Tara and Allie for their inspiration and support.

CRAIG BROCK (*Sound Designer*) has been a freelance audio engineer since 1989. He works internationally as a recording engineer and music producer. At Zach: *The Flaming Idiots*, *25th Annual Putnam County Spelling Bee*, *Love, Janis*, *The Grapes of Wrath*, Anna Deavere Smith's *Let Me Down Easy*, *Shooting Star*, *Beehive*, *Caroline or Change*, *The Clean House*, *Altar Boyz*, *Porgy and Bess*, *Speeding Motorcycle*, *Seussical*, *High School Musical*, *Jesus Christ Superstar/Jesucristo Superestrella*, *Plaid Tidings*, *An Almost Holy Picture*, *Take Me Out*, *The Rocky Horror Show*, *I Am My Own Wife*, *Urinetown*, *Shear Madness*, *Hank Williams: Lost Highway*, *The Vagina Monologues*, *Aida*, *Rockin' Christmas Party*, *The Santaland Diaries*, *Crowns*, *Cabaret*, *It Ain't Nothin' But The Blues* (sound mixer). Regional: *Evil Dead*, *The Musical*; Zilker Theatre Productions, *The*

Music Man; Austin Shakespeare, *Romeo & Juliet*; sound mixer for *Starlight Express* (Las Vegas Hilton). Album credits include: El Tri, Mana, Luis Miguel, La Maldita Vecindad, Jose Jose, Beppe Gambetta, Ofra Haza, Michael Jackson, Ray Charles, Barbra Streisand, Guns and Roses, David Crosby and Stephen Stills.

JEN J. MADISON (*Costume Designer*) has designed costumes for Austin Shakespeare's *Mary Stuart*, St. Stephen's School's *Elephant Graveyard*, the UT-Austin Department of Theatre's productions of *Assassins* and *A Midsummer Night's Dream* and Dance Repertory Theatre's productions of *Aria Redux*, *Parade*, and *Sextet*. Her costume designs for *Assassins* and *A Midsummer Night's Dream* both shared recognition with the scenic designs for "Beautiful designs at UT" in the *Austin Chronicle* article "Top-10 Wonderful Things About Austin Theatre in 2008 (In No Particular Order)." Jennifer has also designed lights for the UT Department of Theatre and Dance's production of *Elephant's Graveyard*. She has worked at Arkansas Repertory Theatre and the Cleveland Playhouse.

TONY TUCCI (*Lighting Designer*) resides in Austin. He has created lighting designs for Ballet Austin's repertory, the Long Center Opening, Metropolitan Classical Ballet, Washington Ballet, Houston Dance Salad, Pittsburgh Ballet Theatre, UT Opera's *Turn of the Screw*, *Don Giovanni*, *LaCurañdera*, *Bastien y Bastinne*, *Albert Herring*. Austin Musicals: *Damn Yankees*, *Carousel*, *West Side Story*, *Annie*, *Gypsy*, *Jesus Christ Superstar*, *Music Man*, *Oklahoma*, *A Chorus Line*, *Carousel* and *Sound of Music*. Tony is a recipient of two B. Iden Payne Awards and Critics' Table awards for lighting. He designed Charles Duggan's production of *Dames at Sea* in San Francisco and at the Goodspeed Opera House. Other works include: American Ballet Theatre's *Configurations* with Mikhail Baryshnikov and the video *Baryshnikov, Dancer and The*

Dance, Ben Stevenson's *Cinderella*, Alvin Ailey American Dance Theatre and works by Cynthia Gregory, Fernando Bujones and Suzanne Farrell. For the 1996 Summer Olympics, he designed for the Cultural Olympiad, showcasing six national and international companies. Internationally, additional works include: National Ballet of Canada, Royal Danish Ballet, Winnipeg and Swedish Ballets, Hong Kong Ballet, Singapore Dance Theatre, Ballet Contemporaneo de Caracas, Christopher Bruce's Kingdom-Geneva Ballet, Flemming Flindt's Caroline Mathilde and Lucifer's Daughter-Royal Danish Ballet.

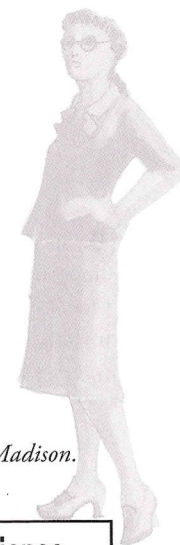
LEILAH STEWART (*Scene Designer*) is a freelance scenic designer and performance artist based in Austin. Her recent work at MMNT includes scenic painting for *Peer Gynt* and scene design for *bobrauschenbergamerica*. Her performance installations received commissions from Austin Scriptworks and the Fuse Box Festival. Leilah is a company member of the Rude Mechanicals and has been their principal scenic designer since 2004. Her work with the Rudes has traveled nationally and internationally and can currently be seen in *The Method Gun* at the Humana Festival in Louisville, Ky.

SHANNON RICHEY (*Production Stage Manager*) has been a production manager and stage manager in Austin for over ten years. With Austin Shakespeare: Production manager for *An Ideal Husband* and stage manager for *Measure for Measure* and *Mary Stuart*. Other selected stage management credits include: *Let Me Down Easy* at ART/ Harvard, *The Arizona Project* at Herberger Theatre; With Zach Theatre: *Let Me Down Easy*, *Jennifer Holliday in Concert*, *Cabaret*, *Love! Valour! Compassion!*, *Hair*, *The Laramie Project*, *Jelly's Last Jam*, *Jouët*, *Tapestry*, *Pride's Crossing*, *The Santaland Diaries*, *Side Man*, *The Rocky Horror Show*, and *The Mystery of Irma Vep*. With TexArts at the Paramount Theatre: *Carousel*, *The Music Man*, and *Big*

River. Shannon has also been a wardrobe supervisor on *Angels in America*, *Dreamgirls*, *Love, Janis*, *Jack and Jill*, *Ruthless! The Musical*, *The Gospel at Colonus*, *Sylvia* and *Das Barbecü*. She also toured as company manager on *The Foreigner* and *Greater Tuna*.

MICHAEL MCKELVEY (*Director, Music Director*) made his MMNT directing debut with *The Pajama Game* last season. Other regional stage directing credits: *John and Jen*, *The Last Five Years* (Austin Critics' Table Award — Best Musical); *Sweeney Todd* (B. Iden Payne Award for Stage and Musical Direction & Best Musical), *Evil Dead*, *Oklahoma*, *Assassins* (B. Iden Payne Award for Stage and Musical Direction), *The Stinky Cheeseman*, *Footloose*, *A Christmas Carol*, *Nunsense*, *The Frog Prince*, *Alice in Wonderland* and others. MMNT music directing credits include *Peer Gynt*, *bobrauschenbergamerica*, *On the Town*, *Parade* (ACT Award), *Cesar and Rueben*, *Cloud 9*, *The Three Sisters*, *Full Circle* and *Honk*. Regional music directing credits include *Beauty and the Beast*, *Crazy for You* (ACT Award), *Seven Brides* (B. Iden Payne Award), *Annie Get Your Gun*, *Into the Woods*, *The Last Five Years*, *John and Jen*, *Troades*, *Damn Yankees*, *Big River*, *The Music Man*, *West Side Story*, *Thoroughly Modern Millie*, *Bat Boy*, *A Funny Thing Happened...Forum*, *The Fantasticks*, *The Best Little Whorehouse in Texas*, *Edwin Drood*, and numerous others. Upcoming projects include *Annie* (Zilker Theatre Productions), *Rent* and *Sweet Charity* (SummerStock Austin). In June, Michael was awarded the John Bustin Award from the Austin Critics' Table for his "Conspicuous Versatility" as a stage and music director, composer and producer. He is coordinator of the St. Edward's Music Program, and artistic director of The Performers' Workshop and SummerStock Austin. He would like to thank his students, fellow faculty members and "family" for all of their support not only on this production but also in everything he does.

Costume design images by Jen J. Madison.

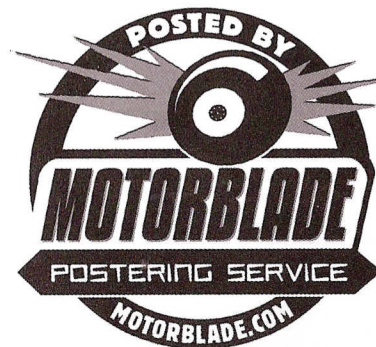


With 17 years of experience
and 3 Chronicle "Best Of Austin"
awards under his belt ...

**FRITZ BLAW IS THE
POSTER DUDE!**

Get your message to over
150 legal posting locations
for only \$60 per week!

**Have a flyer or poster?
Then have it ...**



(512) 554-4034

MARY MOODY NORTHEN THEATRE SOCIETY

Through Mary Moody Northern Theatre, St. Edward's University Theater Arts majors work alongside professional actors, designers and directors in the creation of dynamic artistic work. Our students enjoy unparalleled professional training and an opportunity to earn points toward membership in the Actors' Equity Association, the union of professional actors and stage managers in the United States — all within the context of the university's nationally recognized liberal arts education.

Our program is made possible in part by the generous contributions of the Mary Moody Northern Theatre Society membership. Society contributions allow MMNT to provide students with resources for hands-on learning and to provide audiences with the rich production values that keep you returning to our performances year after year. Each year, Theatre Society members contribute more than \$20,000 to student scholarships, allowing us to maintain our commitment to educate a diverse group of Theater Arts students, regardless of their financial situation.

As a member of the society, you'll enjoy a number of exciting benefits, including invitations to special performances and opportunities to get involved with the Theater Arts program and our students on a deeper level. Your gift may be designated to scholarships, production support or capital improvements, or you may make an unrestricted gift.

We sincerely hope you will join the Theatre Society or continue as a member by making a gift to the Mary Moody Northern Theatre today. We also invite you to encourage your friends and associates to join.

For more information, contact Courtney Fluty at courtneh@stedwards.edu or 512-448-8451.

Thank you for your continued support. We look forward to seeing you again at the MMNT.

PRESIDENT'S ASSOCIATES - SILVER (\$5,000 to \$9,999)

Shawn and Bruce Butler

PRESIDENT'S ASSOCIATES - BRONZE (\$1,000 to \$4,999)

Hamilton Beazley, PhD

Ola Butler Bell

Karen Bowen '86

Father Louis T. Brusatti

Tracy Manier and Daniel Floyd

Ev Lunning Jr.

Lewis A. Meyers Jr.

Mark B. Wilson

DEAN'S CLUB (\$500 to \$999)

Thomas Moe and Cass Grange

Jay Hume

Kimberly Livingston

Florence Mayne

William J. McMillin '79

THE HILLTOP CLUB (\$250 to \$499)

Anonymous

Edna and Gary Blomquist '98

Ronald Egelhoff

Fidelity Investments

Charles Gembinski Jr.

Michael Guerra '83

Dr. and Mrs. Jimmy T. Mills

Richard Orton

Joseph Parks

Michelle and Robi Polgar

Tracy Sherman '81

William Smith

Father Rick Wilkinson, CSC

THE 1885 CLUB (\$120 to \$249)

Anonymous

Alexander Bargioni

Richard and Kelly Bautch

Peter Beilharz

Mary Blackstock

Charles Browne

Jean Marie Byers

Richard Campbell

Maria Caswell

Kathlyn Dailey '78

Alejandro Diaz Jr.

Patrick Dooley

Charles and Dora Gembinski

Gaynelle Gosselin '91

Brian Graham-Moore

Mary Grant

Leonard Heerensperger

Curtis Dean Hirsh

Theresa Hobbs

Bunny Joubert

Timothy Jurgensen

Ethel M. Kutac

Vicky Linsalata

Robert Luedecke

Michael Massey

Angela McCown

Pamela G. McGrew

Connie McMillan

Leo Osterhaus

Rogelio Pequeno

Mark Ploeger

David Prater

Marvela L. Pritchett '02

Barbara Ray

Elizabeth Y. Rice

Dal Sanders

Belinda Sandoval

David Smith

Charles Strunk

Jonathan Wooley

Timothy Wright '91

Ronald Young

CONTRIBUTOR (\$50 to \$119)

John Adams

Robert Apthorpe

Peter Austin

Tara Battani '00

Karl Biggs

Marta Cantu MLA '02

Joe Carpenter

Helene L. Caudill

Brother Richard P. Daly, CSC '61

Barbara Day

Matthew Doak

Michael M. Dorn

Michael Downer

Dorothy Dyer

Phil and Pam Friday

Laurie Friedman-Fannin '79

Jerome Garvey

Theresa Garza

Karen Gibson

Sheila Marie Gordon

Paul Grubb

Mary Helton

Loretta Hughes

Jennifer Johnson

Mr. and Mrs. Kevin Johnson

Brother George Klawitter, CSC

Patrick Liddy

David and Tracy Long

Natacha Martin

Christopher J. Martinez

Theresa Mancuso

Susan McDermott

Molly Minus

Jennifer Phlieger

Marisa Pisano Peterson '00, MLA '04

Kevin Prince

Bernadine Rettger '91

Mary Rist

Adalberto Salazar

Marilyn Schultz

Karen Shaughnessy

Gary Silcott

Bobby Warnecke

Mary Wall '80

Thomas Werner

Joseph Wood

Announcing the 2010–2011 Season

MARY MOODY NORTHEN THEATRE

ST. EDWARD'S UNIVERSITY

The Imaginary Invalid

By Molière

Sept. 16–26, 2010

Who's Afraid of Virginia Woolf?

By Edward Albee

Nov. 11–21, 2010

Eurydice

By Sarah Ruhl

Feb. 3–13, 2011

On the Verge

MMNT II

By Eric Overmyer

March 3–13, 2011

Carousel

Music by Richard Rogers

Book and Lyrics by Oscar Hammerstein II

Based on Ferenc Molnár's Play *Liliom*

April 7–17, 2011

SEASON PASSES ON SALE NOW

448-8484