

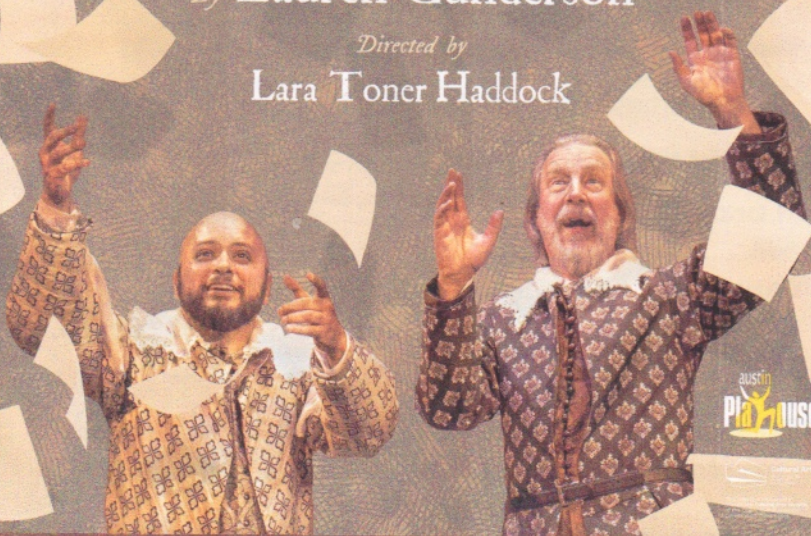
Austin Playhouse presents

THE BOOK of WILL

By Lauren Gunderson

Directed by

Lara Toner Haddock



austin
Playhouse

512.476.0084
AUSTINPLAYHOUSE.COM

AUSTIN PLAYHOUSE
at ACC HIGHLAND

May 31 June 30

Thursday-Saturday 8pm, Sunday 5pm

512.476.0084

AUSTINPLAYHOUSE.COM

All students: tickets are half-price.

AUSTIN PLAYHOUSE

Don Toner Producing Artistic Director
Lara Toner Haddock Artistic Director

present

The Book of Will

by **Lauren Gunderson**

Directed by **Lara Toner Haddock**

Production Stage Manager **Barry Miller***

Assistant Stage Manager **Bernadette Nason***

Assistant Director **Rosalind Faires**

Costume Designer **Buffy Manners**

Set Designer **Mike Toner**

Lighting Designer **Chris Conard**

Sound Designer **Robert Fisher**

Properties Designer **Jennifer Singletary**

The Book of Will is presented by special arrangement
with Dramatists Play Service, Inc., New York

BOARD OF DIRECTORS

President

Carolyn Bartlett

Vice President

Terry Matheny

Treasurer

Diana Huckaby

Richard Apperley

Tom Barbour

Mary Braunagel-Brown

Bruce Brown

Brian Coughlin

Claudette Hartman

Paula Hern

Joe Lostracco

Susan Matheny

Bernadette Nason

Tom Parker

Lara Toner Haddock

Don Toner

Dirk van Allen

THE CAST

John Heminges.....**Huck Huckaby***

Henry Condell..... **J. Ben Wolfe***

Richard Burbage/Ben Johnson..... **Toby Minor**

Alice Heminges/Susannah Shakespeare.....**Marie Fahlgren***

Ed Knight/Isaac Jaggard..... **Joey Banks***

Rebecca Heminges/Anne Hathaway.....**Cyndi Williams***

Elizabeth Condell/Emila de Bassano.....**Boni Hester***

Ralph Crane/Compositor..... **Stephen Mercantel***

William Jaggard/Sir Edward Dering.....**Tom Parker***

Boy Hamlet/Marcus.....**Owen Ziegler**

*Austin Playhouse Acting Company

*Member Actors' Equity Association, the union of professional actors and stage managers.

Setting: London and Stratford-upon-Avon, England
1619-1623

There will be one 15-minute intermission.

*Photography, video recording, and cell phone use (including texting)
are strictly prohibited during the performance.*

PRODUCTION CREW

Costume Assistance.....**Diana Huckaby**

Set Construction.....**Mike Toner**

Sound Board Operator.....**Ryan Williams**

Graphic Design.....**Five and Four Design**

The Book of Will was originally commissioned and produced at the Denver Center
Theatre Company. A division of the Denver Center for the Performing Arts
(Kent Thompson, Artistic Director).

Subsequent Rolling World Premiere produced by Hudson Valley
Shakespeare Festival, Garrison, New York (Davis McCallum, Artistic Director;
Kate Liberman, Managing Director)

The Book of Will May 31- June 30, 2019

Austin Playhouse ♦ P.O. Box 50533 Austin, TX 78763

phone: 512.476.0084 ♦ email: info@austinplayhouse.com ♦ www.austinplayhouse.com

AUSTIN PLAYHOUSE STAFF

Producing Artistic Director.....	Don Toner
Artistic Director.....	Lara Toner Haddock
Box Office Manager.....	Cyndi Williams
Business Manager.....	Kenedi Delgado
Theatre for Youth Coordinator/Marketing Manager.....	Marie Fahlgren
Production Manager.....	Steve Shearer
Development Associate.....	Brian Coughlin
Box Office Associate.....	Leigh Fisher
Administrative Intern.....	Deja Morgan

MISSION STATEMENT

Austin Playhouse is dedicated to providing opportunities for Austin artists and audiences to celebrate the human experience.

Austin Playhouse will nourish your mind, delight your spirit, and enrich your life through professional productions of classic, contemporary, and musical plays.

Special thanks to Aaron Pratt and the Harry Ransom Center.
www.hrc.utexas.edu

Special thanks to our friends at ACC.
www.austincommunitycollege.edu

ACTING COMPANY

Joey Banks	Samuel Knowlton	David Stahl
Brian Coughlin	Christopher Loveless	David Stokey
Mary Agen Cox	Stephen Mercantel	Benjamin Summers
Jacqui Cross	Barry Miller	Zac Thomas
Rachel Dendy	Bernadette Nason	Zach Thompson
Marie Fahlgren	Jason Newman	Lara Toner
Babs George	Carla Nickerson	Dirk van Allen
Claire Grasso	Andrea Osborn	Hans Venable
Boni Hester	Tom Parker	Laura Walberg
Margaret Hoard	Marc Pouhé	Cyndi Williams
Huck Huckaby	Rick Roemer	J. Ben Wolfe
Jess Hughes	Steve Shearer	Lara Wright
Molly Karrasch	Scott Shipman	

PRODUCTION BIOS

Don Toner (Producing Artistic Director) founded Austin Playhouse in 2000. Before that he was Producing Artistic Director of the State Theatre Company/Live Oak Theatre for thirteen years. Prior to coming to Austin he was Associate Producer for the inaugural season of the Los Angeles Theatre Center, Associate Producer/Director of the Cincinnati Playhouse in the Park for three seasons, and founder of Theatre Center of Mississippi - the state's first Equity theatre. He also produced and directed at New Stage Theatre, Bucks County Playhouse, Theatre Midland, and Theatre Four in New York City. For Austin Playhouse he has produced and directed over sixty productions, most recently *Copenhagen*, *The Mystery of Edwin Drood*, *Shakespeare in Love*, *The Immigrant*, *This Random World*, *Guys and Dolls*, *Bloomsday*, *Baskerville*, *A Little Night Music*, *Satchel Paige*, *Disgraced*, *The Philadelphia Story*, *The Real Thing*, *I'm Not Rappaport*, *She Stoops to Conquer*, *The Mountaintop*, *Time Stands Still*, *The Foreigner*, *The Liar*, *Man of La Mancha*, *Noises Off*, *Other Desert Cities*, *The Game's Afoot*, *Born Yesterday*, *Boeing-Boeing*, and *The Lion in Winter*. He has appeared in *And Then There Were None*, *Heroes*, *Afterplay*, and *The Three-penny Opera*.

Lara Toner Haddock (Artistic Director/Director) has directed over twenty productions for Austin Playhouse including *Summer and Bird*, *Monroe*, *Miss Bennet: Christmas at Pemberley*, *Sense & Sensibility*, *Silent Sky*, *The Explorers Club*, *The Norwegians*, *Roaring*, *Venus in Fur*, *And Then There Were None*, *A Room With A View* (which she also adapted), *Age of Arousal*, *Dug Up*, *Women Who Steal*, *Moonlight and Magnolias*, and *A Texas Romance*. She also directed *Age of Arousal* at Southwestern University. She is a member of the Austin Playhouse Acting Company. Favorite Austin Play-

house roles include Tracy in *The Philadelphia Story* (Austin Chronicle Top 10 Performances of 2015), Catherine in *The Foreigner*, Brooke in *Other Desert Cities*, Daria in *The Game's Afoot*, the women in *The 39 Steps*, Hypatia in *Misalliance*, Lotie in *Enchanted April*, and Thomasina in *Arcadia*.

Lauren Gunderson (playwright) is the most produced living playwright in America, the winner of the Lanford Wilson Award and the Steinberg/ATCA New Play Award, a finalist for the Susan Smith Blackburn Prize and John Gassner Award for Playwriting, and a recipient of the Mellon Foundation's 3-Year Residency with Marin Theatre Co. She studied Southern Literature and Drama at Emory University, and Dramatic Writing at NYU's Tisch School where she was a Reynolds Fellow in Social Entrepreneurship. Her work has been commissioned, produced and developed at companies across the US including the Denver Center (*The Book of Will*), South Coast Rep (*Emilie*, *Silent Sky*), The Kennedy Center (*The Amazing Adventures of Dr. Wonderful and her Dog!*), the O'Neill Theatre Center, Berkeley Rep, Shotgun Players, TheatreWorks, Crowded Fire, San Francisco Playhouse, Marin Theatre, Synchronicity, Olney Theatre, Geva, and more. Her work is published by Dramatists Play Service (*Silent Sky*, *Bauer*), Playscripts (*I and You*; *Exit Pursued by a Bear*; and *Toil and Trouble*), and Samuel French (*Emilie*). She is a Playwright in Residence at The Playwrights Foundation, and a proud Dramatists Guild member. She is from Atlanta, GA, and lives in San Francisco. LaurenGunderson.com and [@LalaTellSAStory](https://twitter.com/LalaTellSAStory).

Barry Miller (Stage Manager) is a member of the Austin Playhouse Acting Company where he has appeared in *I'm Not Rappaport*, *Picasso at the Lapin Agile*.

Amadeus, Inherit the Wind, A Man for All Seasons, The Merry Wives of Windsor, A Christmas Carol and has stage managed many productions including *Paradise, Monroe, Lucky Stiff, The Immigrant, This Random World, Guys and Dolls, Death of a Salesman, Baskerville, A Little Night Music, Satchel Paige, The Real Thing, Chicago, Sherlock Holmes, The Liar, Venus in Fur, Man of La Mancha, Noises Off, The Game's Afoot, Born Yesterday, A Room with a View, The Lion in Winter, The 39 Steps, Jacques Brel, Misalliance, Frost/Nixon, The Fantasticks, Dancing at Lughnasa, A Funny...Forum, Les Liaisons Dangereuses, Inherit the Wind, An Ideal Husband, The Night Hank Williams Died, House, Enchanted April, Cat on a Hot Tin Roof, Kiss Me Kate, Travesties, The Dead Presidents' Club, Copenhagen and Arcadia*. He was a company member of State Theatre Company for 13 years where he performed in and stage managed 31 productions. He is also a member of the Hyde Park Theatre Company. A 38-year veteran of the Austin Public Library, he holds masters degrees from the University of Michigan and St. Edward's University.

Chris Conard (Lighting Designer) is an Austin-based Designer and Artist. He designed lights for the Austin Playhouse productions of *Monroe* and *Lucky Stiff*. He graduated from SFUAD in Santa Fe, New Mexico with a BFA in Technical Theater design in 2014. Since graduation, he has focused on expanding his skill sets, and exploring the intrinsic connection between art and the viewer. He is interested in creating original work that challenges the viewer, institutions of normality, and perspectives of reality. He was the recipient of the 2017 Austin Critics Table Award for Best Set Design and the 2017 B. Iden Payne Award winner for Outstanding Set Design. jchrisconard.com

Rosalind Faires (Assistant Director) is an Austin-based director and actor. She was the 2016 recipient of Capital T The-

atre's New Directions fellowship and was nominated for Outstanding Direction by the Austin Critics Table Awards for her production of *Marie Antoinette*. Regional directing credits include *The Wolves* (assistant director, Hyde Park Theatre), *Much Ado About Nothing* (Something For Nothing), *Sense and Sensibility* (assistant director, Dallas Theater Center), *Macbeth* (Rude Fusion), and *Gabriel* (Southwestern University). She received dual degrees in Plan II Honors and Theatre & Dance from The University of Texas at Austin.

Robert Fisher (Sound Designer) is a Sound Designer, musician, and performer in Austin with Rude Mechs and Hyde Park Theatre. Robert has co-created, designed and/or performed in Rude productions since 2000, including most recently *Field Guide, Requiem for Tesla, Fixing Timon of Athens, and Now Now Oh Now*. He designed sound for the Austin Playhouse productions of *Summer and Bird, Monroe* and *Lucky Stiff*. For Hyde Park Theatre, Robert recently designed the regional premiers of *A Doll's House Pt. 2, The Antipodes, Wakey Wakey, The Wolves*, and last appeared in *The Night Alive*.

Buffy Manners (Costume Designer) has designed over one hundred productions for Austin Playhouse and Don Toner. She has also designed *Three Sisters, Eurydice, and Measure For Measure* for Mary Moody Northen Theatre at St Edward's University; *Cherry Orchard* and *Ghosts* for Breaking String Theatre; and *A Midsummer Night's Dream, Hamlet, Henry V, Richard III, The Rivals, and Romeo and Juliet*, for Austin Shakespeare Festival. In October 2012 she was fortunate enough to be invited to design a production of *Hamlet* for PragueShakespeare Festival at the National Theatre in Prague, Czech Republic, directed by Tina Packer. She has been nominated for several B. Iden Payne and Austin Critics' Table Awards for her past work, and last season won

a Critic's Table award for *Shakespeare In Love* at Austin Playhouse.

Bernadette Nason (Assistant Stage Manager) is an Austin Playhouse Acting Company member, appearing in Austin Playhouse productions of *Lucky Stiff, Shakespeare in Love, Guys and Dolls, Sense & Sensibility, The Philadelphia Story, The Real Thing, Sherlock Holmes, And Then There Were None, Noises Off, Other Desert Cities, Boeing-Boeing, The Importance of Being Earnest, A Christmas Carol, Misalliance, Sylvia, A Funny Thing Happened on the Way to the Forum, Blithe Spirit* (B.I.P. Award), *The Threepenny Opera, Steel Magnolias, The Odd Couple, An Ideal Husband, The Underpants* (B.I.P. Award), *The Merry Wives of Windsor* (Austin Critics' and B.I.P. Awards) and *The Man Who Came to Dinner*. She's worked with St. Edward's University, Austin Shakespeare, and ONSTAGE Theatre, among many others. Her first memoir, TEA IN TRIPOLI, is now available on Amazon.com. Nason will appear on Wednesday mornings in June/July at the Central Library with the Austin Symphony's summer series for children. Further details at www.bernadettenason.com.

Mike Toner (Set Designer) has designed sets for the Austin Playhouse productions of *Copenhagen, The Mystery of Edwin Drood, Monroe, Lucky Stiff, Shakespeare in Love, The Immigrant, Miss Bennet, This Random World, Guys and Dolls, Sense & Sensibility, Death of a Salesman, Bloomsday, Baskerville, Silent Sky, A Little Night Music, the Explorers Club, Satchel Paige, Disgraced, The Philadelphia Story, The Norwegians, I'm Not Rappaport, The Mountaintop, Time Stands Still, The Forfeigner, Roaring, Born Yesterday, Proof, and A Christmas Carol*. Mike has also served as lead carpenter on over 30 Austin Playhouse productions.

Jennifer Singletary (Properties Designer) enjoys designing in many different

fields, including theater, film, and graphic design. Her first production with Austin Playhouse was *The Night Hank Williams Died*, and she has gone on to design props for over 20 more productions with them. She has art directed commercials and music videos, worked as an art department crew member on movies and in television, and recently worked with Taniguchi Architects designing a restaurant interior. She holds a BA in Romance Languages from the University of North Carolina at Chapel Hill, and an MFA in Scenic Design from the University of Texas at Austin.

Joey Banks (Isaac Jaggard/ Ed Knight) is an Austin Playhouse Acting Company member. He has appeared in Austin Playhouse productions of *This Random World, Sense and Sensibility, Death of a Salesman, The Game's Afoot, Chess, A Room with a View, and The Best Little Whorehouse in Texas*. Other regional credits include *Reefer Madness, Bloody, Bloody Andrew Jackson* (B. Iden Payne and Austin Critics' Table Awards), *Debbie Does Dallas, Silence, Nevermore* (Doc-tuh Mistuh Productions), *A Midsummer Night's Dream* (Austin Shakespeare), *The 25th Annual Putnam County Spelling Bee* (Zach Theatre), *HAIR!* (San Jose Rep), *The Madwoman of Chailot* (California Theatre Center), *Girlfriend* (TheatreWorks), and the international tour of *Miss Nelson is Missing* (California Theatre Center). He holds an MFA in Acting from Illinois State University.

Marie Fahlgren (Alice Heminges/ Susannah Shakespeare) is an Austin Playhouse Acting Company member. She was recently seen in the Austin Playhouse productions of *Miss Bennet: Christmas at Pemberley, The Selfish Giant, Sense and Sensibility, Baskerville, The Arkansaw Bear, The Philadelphia Story, and The Real Thing*. She holds a BFA in acting with a minor in psychology and dance from the University of Montana-Missoula. She toured with the Montana Repertory

Theatre's productions of *Lost in Yonkers* (Arty Kunitz) and *To Kill a Mockingbird* (Scout). Other performance credits include: *Any Night* (Anna), *Gypsy* (Louise), *The Wizard of Oz* (Dorothy), *One Flew Over the Cuckoo's Nest* (Candy Starr), *Dog Sees God* (Trish), *The 39 Steps* (All Women), *The Odd Couple: Female Version* (Vera), *Gypsy* (Dainty June), *Grease* (Jan), and Exchange Artists' *Circle the Wagon* and *Again*.

Boni Hester (Elizabeth Condell/ Emilia de Bassano) is an Austin Playhouse Acting Company member. She has appeared in Austin Playhouse productions of *Lucky Stiff*, *Guys and Dolls*, *A Little Night Music*, *The Norwegians*, *Man of La Mancha*, *Triumph of Love*, *The Game's Afoot*, *Jacques Brel*, *A Flea in Her Ear*, *The Threepenny Opera*, and *The Best Little Whorehouse in Texas*. She was a member of Austin's State Theater Acting Company where she appeared in *My Fair Lady*, *As Bees in Honey Drown*, *Beast on the Moon*, *Woody Guthrie's American Song*, *A Christmas Carol*, *The Importance of Being Earnest*, *Pumpboys & Dinettes*, *She Loves Me*, *A Little Night Music*, *The Golden Shadows Old West Museum*, and *Nonsense* among others. Regional credits include *Dames at Sea* and *You're a Good Man Charlie Brown*.

Huck Huckaby (John Heminges) is a member of the Austin Playhouse Acting Company. Huck has appeared in *The Mystery of Edwin Drood*, *Monroe*, *Shakespeare in Love*, *The Immigrant*, *Sense and Sensibility*, *Bloomsday*, *A Little Night Music*, *The Explorers Club*, *The Philadelphia Story*, *Time Stands Still*, *Roaring*, *The Liar*, *Man of La Mancha*, *Triumph of Love*, *Noises Off*, *The Game's Afoot*, *The Lion in Winter*, *Laughter on the 23rd Floor*, *Jacques Brel Is Alive and Well and Living in Paris*, *Picasso at the Lapin Agile*, *Frost/Nixon*, *The Fantasticks*, *Dancing at Lughnasa*, *Amadeus*, *A Funny Thing Happened...Way to the Forum*, *Don't Dress for*

Dinner, *Inherit The Wind*, *Women Who Steal*, *The Dead Presidents' Club*, *The Threepenny Opera*, *An Ideal Husband*, *The Night Hank Williams Died*, *The Best Little Whorehouse in Texas*, *The Odd Couple*, and *House and Garden*.

Stephen Mercantel (Ralph Crane/Compositor) is an Austin Playhouse Acting Company member. He has appeared in Austin Playhouse productions of *Lucky Stiff*, *Shakespeare in Love*, *Miss Bennet*, *The Selfish Giant*, *Sense and Sensibility*, *Death of a Salesman*, *Baskerville*, *Satchel Paige*, *The Philadelphia Story*, *The Real Thing*, *I'm Not Rappaport*, *She Stoops to Conquer*, *Sherlock Holmes*, *The Foreigner*, *Roaring*, *The Liar*, *And Then There Were None*, and *Man of La Mancha*. He graduated from St. Edward's University with a Bachelor's in Theatre, where he appeared in *Carousel* and *Peer Gynt* at the Mary Moody Northern Theatre. He has worked with the touring children's theatre, Brightstar, which toured the east coast from Florida to New Jersey. Other plays include *Doc-tuh Mistuh's Nevermore* and *Reefer Madness*, *Simon* in Capital T's *Exit*, *Pursued by a Bear*, *Jared* in Hyde Park Theatre's *Body Awareness* and *Herr Schultz* in Summer Stock Austin's *Cabaret*.

Toby Minor (John Burbage/ Ben Johnson) has appeared on several stages in the Austin area, but this is his first with Austin Playhouse. He has been in *One Man Two Guvnors* and *Peter and the Starcatcher* with Zach Theatre (B Iden Payne awards). *The Rover*, *The History of King Lear* (B Iden Payne), and *The Girl with Time in Her Eyes*, with Hidden Room Theatre. *A Midsummer Night's Dream*, *Merry Wives of Windsor*, *Much Ado About Nothing*, *Romeo and Juliet*, *Comedy of Errors*, and *Present Laughter* with Austin Shakespeare. *Hound of the Baskervilles*, and *Servant of Two Masters* with Penfold Theatre. *Qualities of Starlight* (B Iden Payne Best Actor) with The Vortex Theatre. Toby is also the Stage

Combat instructor at Texas State University and Co-Founder of Violent Crown. He has choreographed for almost every Theatre in Austin and the surrounding area including Austin Playhouse, Zach Theatre, Penfold, Hidden Room, Vortex, Something for Nothing, and Sea World San Antonio. He has won several B. Iden Payne Awards and nominations and a Falstaff Nomination, all for Fight Choreography.

Tom Parker (William Jaggard/ Sir Edward Dering) has appeared in over ninety productions during his thirty-nine years in Austin theater. He is a founding member of the Austin Playhouse Acting Company and has served two terms on the Board of Directors. He originated the role of Harry S. Truman in the world premiere production of Larry L. King's play, *The Dead Presidents' Club*. Tom was most recently seen in the Austin Playhouse productions of *Guys and Dolls*, *The Explorers Club*, *I'm Not Rappaport*, *Noises Off* and *The Dead Presidents' Club*.

Cyndi Williams (Rebecca Heminges/ Anne Hathaway) is a member of the Acting Company at Austin Playhouse, where she performed roles in *The Immigrant*, *Sense and Sensibility*, *Bloomsday*, *Silent Sky*, *The Foreigner*, *Lady Windermere's Fan*, *The Game's Afoot*, *A Room With a View*, *Three Viewings*, *Picasso at the Lapin Agile*, *Dancing at Lughnasa*, *Age of Arousal*, *Moonlight and Magnolias*, *A Texas Romance*, *The Man Who Came to Dinner*, and *The Seagull*. Recently, she appeared in *A Doll's House Part Two* at Hyde Park Theater. Also an award-winning playwright, her plays *Roaring* and *Dug Up* (Critics' Table Award, Best Original Script) have been produced by Austin Playhouse. Her play *A Name for a Ghost To Mutter* was produced by Theatre East in NYC. She was a Founding Core Member of Script Works and serves on the Artistic Advisory Board for Salvage Vanguard Theater, where she appeared in *Denim Doves*, for

which she wrote the lyrics. Her screen work includes *Room* (Independent Spirit nomination for Best Lead Actress, Karen Morley Award), *The Leftovers*, *Temple Grandin*, *Four Play*, *Zero Charisma*, *Computer Chess*, and *The Preacher's Daughter*. By day, she takes reservations for Austin Playhouse.

J. Ben Wolfe (Henry Condell) is a member of the Austin Playhouse and Hyde Park Theatre acting companies. Directing credits include *Three Viewings*, *Heroes* (AD), *The 39 Steps* (AD), and *Bloody, Bloody Andrew Jackson* (AD). Stage credits include *Crime and Punishment*, *Shakespeare in Love*, *Baskerville*, *The Explorers Club*, *Disgraced* (Critics' Table Awards), *The Norwegians*, *Am I White* (B. Iden Payne Award), *The Liar*, *Man of La Mancha*, *The Mother***** With the Hat* (BIP nominee), *The Pain and The Itch* (BIP Award), *The Turn of the Screw*, *Speed the Plow*, *The Dog in the Manger* (BIP and Critics' Table Award), *Romeo and Juliet* (BIP Award), and *Featuring Loretta* (BIP Award). Voice credits include *Kings of Atlantis*, *Samurai X*, *Soul Hunter*, *Wedding Peach*, *Zone of the Enders: Idolo*, *Wizard 101*, and DC Universe Online. Film credits include *Holy Hell*, *The Quiet Girl's Guide to Violence*, *Second Impression*, and *Project: Rant*.

Owen Ziegler (Boy Hamlet/ Marcus) is a recent graduate of the St. Edward's University BFA Acting program. He appeared in the Austin Playhouse productions of *The Mystery of Edwin Drood* and *Shakespeare in Love*. He has acted in many productions around Austin including *Hamlet*, *Robber Bridegroom*, *Resistible Rise of Arturo Ui*, *Pride and Prejudice*, and *Cabaret* at the Mary Moody Northern Theatre, *Dogfight* at Austin Theatre Project, *The Spark* at Salvage Vanguard, *The Dresser* at The Vortex, and *Twelfth Night* at City Theatre. In addition to Theatre he also has experience in voice over and film.

THE BOOK OF WILL - A Brief History

By Rosalind Faïres

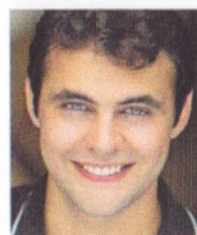
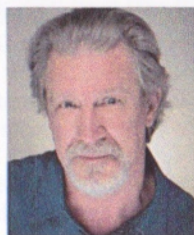
The Book of Will is about the creation of a real document — Shakespeare's First Folio, or as it was titled at the time, Mr. William Shakespeares Comedies, Histories, & Tragedies. It was the first printed collection of Shakespeare's plays, published seven years after the playwright's death in 1616, and the reason we have most of Shakespeare's plays available to us today.

Why wouldn't Shakespeare have just published his plays during his own lifetime? After all, he published his poems. Two things on that. First of all, plays were rarely published for reading purposes at the start of the 17th century — playwrights sold their work to the theatre companies that performed them. Secondly, some of Shakespeare's plays were published while he was still alive, but Shakespeare likely didn't have any approval over them. Since there was no copyright law protecting authors, some printers could print anything they claimed to have the manuscript of and would sometimes plagiarize stolen prompt-books (essentially stage manager's copies of a script) or approximate a script based on audience member's memory of the play. The unauthorized Shakespeare scripts were small, cheap books known as quartos (after how many times a large sheet of paper was folded to make the pages) and their texts often differ greatly from the "official" Shakespeare texts we're familiar with.

It's thanks to Henry Condell and John Heminges, two members of Shakespeare's theatre company, the King's Men (known as the Lord Chamberlain's Men until they came under King James VI of Scotland's patronage in 1603, after the death of Queen Elizabeth I), that we have "To be or not to be, that is the question" instead of being left with "To be or not to be, ay, there's the point". They partnered with the printer William Jaggard and his son, Isaac, on the ambitious project of a folio collection of Shakespeare's plays. *The Book of Will* follows their journey.

Remarkably, 235 of the approximately 750 First Folios originally printed have survived to the current day. Three of the existing copies live here in town, in the Harry Ransom Center on The University of Texas at Austin campus.

The characters in *The Book of Will* include the remaining members of Shakespeare's troupe, The King's Men. They were joined by family, friends, printers, collaborators, ex-lovers, and sometimes rivals, all of whom came together to create a literary masterpiece and change the course of history.



Historical portraits: top row: Ben Jonson, Anne Hathaway, Richard Burbage, Emilia Bassano Lanier

second row: John Heminges as Falstaff, Henry Condell

***The Book of Will* cast:** Huck Huckaby, J. Ben Wolfe, Boni Hester, Toby Minor, Marie Fahlgren, Joey Banks, Stephen Mercantel, Cyndi Williams, Tom Parker, and Owen Ziegler

PRODUCTION FUND CONTRIBUTORS

Thank you to all our production fund contributors.

From lights, sound, sets and costumes to actors, directors and designers, you support every aspect of our productions.

Production Fund gifts are acknowledged in our playbills for one year.

AP ALL-STARS

Our newest giving circle is designed to recognize our highest level donors.

Production Fund donors at \$1,000 and above are eligible for membership.

\$50,000 and above

Anonymous
City of Austin Cultural Arts Division

\$20,000 - \$49,999

Bloomberg Philanthropies

\$10,000 - \$19,999

Claudette Hartman
Terry & Susan Matheny
The Shubert Foundation

\$3,000 - \$9,999

Dr. & Mrs. Howard Burt
Robert Cratchit Fund
Diana & Huck Huckaby

\$1,000 - \$2,999

Carolyn Bartlett
Charles & Diane Brewer
Mary Braunagel-Brown & Bruce Brown
Joann Burch

Chris & Alex Cavalli
Jerry & Becky Conn
Mary Agen Cox & Perry Heston
Drs. Sandra & Larry Fox
David & Susan Gaddis
Suzanne Moses & John Hall
Mary Jane Kolar & Glenn Haluska
Hal & Elaine Jacobs
Don & Suzie Ketteman
Paula & Peter Klante
Shari Kolding
Carol & James Ludwig
David & Amy Malish
Maria & Roger Nasr
Nancy Radding
Jan Roberts
Jonathan & Maureen Slocum
Phil & Sylvia Spertus
Hans Venable & David Stahl
Karen & Max Werkenthin
Pat & Tibby Wright
Joe & Nancy Young

\$500 - \$999

Richard & Sandy Apperley
Bill & Suzanne Childs
Lachelle & Gary Greif
Iris Groten
Graham & Adele Haddock
Robert & Frances Hieronymus
Bill & Nancy Kibler
Joe & Ruth Ann Lostracco
Judy Cardwell
& Bill McDougald
Joe & Pat Nahas
Dave Johnson & Kathy Raesz
Jim & Trish Roberts-Miller
Zach & Kelli Thompson
Roger & Angie Wright.

\$250 - \$499

Tim & Kerry Brosnihan
Richard Bryan

Harold & Lynne Cline
Mary & John Fahlgren
Eunice Geibel
Hugh & Nancy Germanetti
John & Frances Gibich
Glaxo Smith Kline Foundation
Glenda Goehrs
Brian & Robin Graham-Moore
Rachel Haddock
& Keith Wobeser
Donna & Robert Hebner
Jim & Sherry Horan
Jody & Mike Hughes
IBM, Inc.
Ian & Buffy Manners
The Mercantel Family
Brian Bedford & Julie Miller
Bob & Rheta Page
Gary & Kathy Ragan
Randall's

Amy Kay Raymond

Louis & Carla Sachar
Carol Sage
Chris Shaughnessy
Barbara Stevenson
Michael Sturley, Michele
Deitch & Jennifer Sturley
John & Betty Thornell
Jeff & Canda Warner
Pat & Kirby Watson
Steven & Louise Weinberg
Glenda and Ben Wolfe

\$50 - \$249

Jesus M. Alcantar
John R. Allison & Paula Pulaski
Mary & Bill Arnold
Dr. Thomas J. Ashbaugh
Shelly Baumgartner
BJ's Restaurant

Whit & Betty Bodman
Jim and Rosalie Boldin
Martha Boyd
Floyd S. Brandt
Kay & Richard Bratton
Gayle Cannon
Ken Webster & Kathy Catmull
Tom & Janell Chesnut
Diane Cimo
Suzanne Cockreham
Bob & Gail Coffee
C. Grant & Jyl F. Cole
Savannah Horton
Sean & Sherry Coughlin
Catherine Crowley
Patricia L. Curtis
Sean & Jaime Davis
Don & Janice Day
Paul DeGroot
Dorothy & John De La Garza
Sallie Delahoussaye
Dell, Inc.
Bill & Pauline Denson
Donna Di Carlo
Peggy Dunham
John & Marjorie Eason
Carmina Eaton
Kati Elliott
Eloise Ellis
Dr. & Mrs. Thomas W. Estes
Tennessee LaBrie
Bill & Mary Finch
Ron & Elfie Fortner
Sandra Freed
Jim Gaudet
Babs George
Wanda Summers
& Vince Geraci
Robert & Kay Ghiselli
The Ginder Family
Mark Goldberg
Paul & Pat Gowens
Claire & Corey Grasso
Dennis & Susan Grosse
Lara Toner Haddock
Shirley Hagmeier
Lee & Janet Hagy
Paynona Ham
Nan Hampton
Russell Harding
Sarah Harriman
Joyce & Mark Hellums
John & Marty Henderson
Linda Daniels-Hernandez
& Saul Hernandez
Richard Herndon
Arlene Hofmann

Ron Hubbard
David Jenkins
Sharon Warner & Grace
Johnson
Louanne Jones
Joe & Hazel Joseph
Dick Kallerman
Stephen & Patricia Kalthoff
Dales Kent
Laura King
Joe Kirkendall
Richard & Joyce LaFleur
Kathy Lagaza
Lydia Langowski
Ron & Lois Langsweirdt
Steve P. Levendakes
Catherine Lucchesi
Ev Lunning
Doug & Sara Mackie
Helen Mary & Henry Marek
Alice Womack Marsel
Dr. Betty Matluck
Bob & Loraine Mayfield
Melinda McCarty
The McCaslin Family
Bill McMillin & Mary Furse
Dan Meador
Rod Meek
Stephen Mercantel
Mickey Michaels
Barry Miller
Janie Keys & Ivan Milman
Gail Minault
Harold & Barbara Mindlin
Bernadette Nason
Neil Nichols
Warren Durham
& Lisa Nieman
David & Dottie Norman
Pat & Mel Oakes
John & Kim O'Brien
Erik Parker
Paul & Linda Parrish
John B. Payne
Mike & Eileen Pestorius
Stephen Petrilli
Dr. & Mrs. Clift Price
Shehnavaz N. Pundole
Robert Reynolds & Kelly Raley
Elizabeth Ray
Tom Parker & Lauri Raymond
David W. Renfro
Lawrence Rice
Sue B. Roberts
Margaret Robison
Rick Roemer
Kaye Rogers

Robin Rosenstock
Kali & Dan Rourke
Rob Rutishauser
Mary Sahs
William & Christina Schroer
Edward Seymour
Pat Shotwell
Mary F. Smith
Janice Smith
Sandra L. Stallard
Sam Stenger
Kent Stewart
Joy & Chris Stone
Virginia Stotts
Gene & Joyce Stouder
Mary Jeter Sullivan
Kay Taebel
Boyd & Kitty Taylor
Ann & Randy Teich
Leslie Thomas
J. Thurman
Robert Tolaro
Don & Irllyn Toner
Katherine & Antonio Torrini
Benita Trevino
Carolyn Trigg & Joe Haggard
Dirk van Allen
Pamela Vonmende
Barry & Christina Waite
Steve Warren
Delpine Welch & Kenneth
Wilkerson
Anna & Matt Welch
Joe & Mary Margaret Wells
Jim & Gerri West
Kay & Leon Whitney
Cyndi Williams
Barbara Worley
Emmy Wu
Emily Yeager
Gene & Penny Young
Steven & Nancy Young

For more information on how your charitable giving impacts the work of Austin Playhouse, please contact our development department at development@austinplayhouse.com or 512.476.0084.

BUILDING FUND CONTRIBUTORS

Thank you for supporting our vision of a permanent, sustainable home!

\$50,000 and above

Anonymous
Carolyn Bartlett
Huck & Diana Huckaby

\$20,000 - \$49,999

John Hall & Suzanne Moses
Ian & Buffy Manners
Terry & Susan Matheny
Don & Irlyn Toner
Hans Venable & David Stahl

\$10,000 - \$19,999

Dr. & Mrs. Howard Burt
Carolyn Rice Bartlett Foundation
Mary Agen Cox & Perry Heston
Scott & Andrea Ginder
Shari Kolding
The Charles & Betti Saunders
Foundation
Dirk van Allen & Lanny van Allen
Pat & T.B. Wright

\$5,000 - \$9,999

William G. Allen
Mary Braunagel-Brown & Bruce
Brown
Jess & Doris Bryant
Jerry & Becky Conn
Linda Daniels-Hernandez & Saul
Hernandez
Bernie & Betty Farkas
Bob & Peg Gerrie
John & Frances Gibich
Lachelle & Gary Greif
Graham & Adele Haddock
Claudette Hartman
Judy & Peter Kovler
Louis & Carla Sachar
Ralph & Nevie Smucker
Karen Uhlenbeck & Bob Williams
Anna & Matt Welch
Hank Wheeler
Dr. & Mrs. David Zersen

\$1,000 - \$4,999

Robert B. Adam
Bob & Debbie Barrow
Jane Basey
Carol Berceen
Mary Blitch
Bob Bluntzer
Diane & Charles Brewer
Josephine Brummett
Richard Bryan
Barbara Cave

Bob & Gail Coffee
Frances Cree
Eleanor B. Crook
Patricia L. Curtis
John Curts & Yvonne Ferris
Dick Clark Associates + Archi-
tecture
Janet & Tom Earle
ExxonMobil Foundation
Sandra & Larry Fox
Sandra & Buddy Freed
David Friend & Jackie Goodfellow
Cal & Joy Gooden
Iris Groten

Harvey & Kathleen Guion
William & Mary Hart
Dwight & Diane Henn
Robert & Frances Hieronymus
IBM Corporation
Hal & Elaine Jacobs
Dave Johnson & Kathy Raesz
Paula Johnson
Murlene Johnston
Charles & Joan Keith
Wayne & Liz Kesterson
Don & Suzie Ketteiman
Mary Jane Kolar & Glenn Haluska
Larry Lewis
Charles & Beverly Locklin
Bruce & Judy MacKenzie
David & Amy Malish
Mary Jane Marks
Connie McMillan
Maria McPhail
Barry Miller
David Moore
MorningGlory Partners, Ltd.

Bernadette Nason
Donna Olson
Randy & Kaye Patterson
Jerry & Ann Pearson
Sydelle Popinsky & Chuck Man-
delbaum
Progressive Insurance Foundation
Linnea Ratcliff
Jan Roberts
Rick Roemer
R.B. & Pat Rudy
Patsie Henery Schless
Ida C. Scott
Jonathan & Maureen Slocum
Joan & Del Smith
Phil & Sylvia Spertus
Patricia Spurr
David & Julia Stockey
Virginia Stotts

Wanda Summers & Vince Geraci
Zach & Kelli Thompson
John & Betty Thornell
Nancy Tucker
Laura Walberg
Steven & Louise Weinberg
Leon & Kay Whitney
Roger & Angie Wright
Joe & Nancy Young

\$500 - \$999

Jim & Rosalie Boldin
Chevron Humankind
Harold & Lynne Cline
Roger & Suzanne Cockreham
Brian Coughlin
Bob & Patty Cramer
Gay Daniels
John Dapper
Marion DeFord
Sallie Delahoussaye
John & Marjorie Eason
George Fahlund
Fred & Betty Glosser
Russell Harding
Mark & Joyce Hellums
Diane & Hudson Ingram
Louanne Jones
Bill & Nancy Kibler
George & Kay Kitzmiller
Richard & Joyce LaFleur
Legacy Planning Group
J.W. & Mary McGrath
Lynn Meyer
Gail Minault
G.H. & Marion More
Maria & Roger Nasr
Norman & Linda Oliver
Jane Peppard
Krin Brooks Perry
William Pierson
Larry & Lauren Prescott
Susan J. Pryor & Richard E. Boner
Laura Radcliff
Pat & Bonnie Reynolds
Beverly Roemer
Bob Rutishauser
Janet Schlotter
Peter Schram & Harry Ullmann
Chris Shaughnessy
Don & Ruth Six
Richard Tanner
J.R. & Flo Weiershausen
Karen & Max Werkenthin
Michael & Lynne Williams
Custis Wright

Gene & Penelope Young

\$250 - \$499

Jesus M. Alcantar
Apple Matching Gifts Program
Avashia Family Charitable Fund
Pam & Bob Bauer
Monroe & Martha Bober
Jim & Gayle Browne
Karl & Jan Buesing
Ken & Sharon Buford
Ashley Cook
Bill & Pauline Denson
Chris & Linda Dimick
Cleon & Jane Dunham
D.D. & Maxine Dunlop
Robert & Jan Ellzey
Carol Fasnacht
Reynaldo Soliz & Lex Freitag
Joanne Hopkins & Joe Gagen
Roger & Eunice Geibel
Hugh & Nancy Germanetti
Glen Getty & Patsy Hunter
Leroy & Judy Hampleman
Zora Mae Hise
Mary C. Jansen
Terry & Nancy Keith
Kimberly Clark Foundation
Lydia Langowski
Marian B. Maxwell
Thom Mayer
Bob & Loraine Mayfield
Merrill Lynch
Millward Brown
Ann Moody
Gerrell D. Moore
Richard Orton
Ed & Judy Parken
Jerry Perkins
Clift & Sue Price
Dennis Ray & Carrie Thielemann
Alan & Connie Regimbal
Steve & Boni Shearer
William & Gail Sofer
Michael Sturley & Michele Deitch
Don & Germaine Tuff
Tal Tversky
Paul & Diana Urban
Steve Warren
Robert & Debra Watkins
James & Gerri Gehman West
Ralph Wickenberg
Gary & Sherri Williams

\$50 - \$249

Odette Aguiar
Ray & Marlene Allard
Paula Pulaski & John Allison
Larry & Lois Amundson
Mary Arnold

Gerry & Joan Astorino
Bob & Lorraine Ball
James & Suzanne Balling
Lois & Don Bebout
Jerry & June Beck
Harold & Sandra Bergh
Paul & Mary Beyers
Martin B. Blank
Terrell Blodgett
Sharron Bower
Floyd S. Brandt
Elizabeth Brummett
Gary & Jo Bryan
Barbara Buttrey
Babs Cape
Dr. Ara Carapetyan & Rebecca
Pigott
Judy Cassorla
Ken Webster & Katherine Catmull
Christina Cavalli
Tom & Janell Chesnut
Judy Clack
James L. Cockrum
Rosemary Coffman
John Curtis
Don Curtis
Rachel Dendy
Kathy & Bart Denum
Tom & Verity Devine
Warren Durham & Lisa Nieman
Robert Elfant
Emilio Englade
Thomas E. Fanning
Ed & Jo Ann Farrell
Bill & Sally Feutz
Karen Fraser
Gerald Galbraith
Babs George
Honey Gordon
Brian & Robin Graham-Moore
Rachel Haddock & Keith Wobeser
Gray G. Haddock
Nan Hampton
Richard Hartgrove
Ethel Harvey
Sue Hoke
Michele M. Hoovler
Janet M. Huelskamp
Jim & Joan Johnson
Janette Jones
Dianne & Roy Kaderli
Hugh M. Kane
Joy Klein
Richard & Joanne Macon
Madeleine Manford & Stan Reece
Eli & Myrna Margolin
Elaine Martens
Julian & Lois Martin
Richard Martin
Barry & Pat Massey

Joseph & Betty Matluck
Katie McCloskey
Larry McGonigal
Mickey Michaels
Charles Michalik & Beverly Else
Mary E. Milam
Leo Monroe & Michael Wilson
Morgan Keegan
Mary Morse
Val Negri
David & Dottie Norman
Elaine O'Brien
Timothy O'Dowd
Phyllis & Gerry O'Rourke
Wayne & Sandra Packwood
Roger B. Parks
Mary Parse & Klaus Bichteler
Rosemary Petzold
Diana Phillips
Jack & P.J. Pierce
Jay & Mary K. Pierson
Mickie Powers
Shehnavaz Pundole
Rex Raymond
Amy Kay Raymond
Janet Reed
Emily E. Rhea
James Rhoades
Jamie Rhodes
Beverly Giusti Rose
Janet Sawyer
Peggy Schott
James & Margaret Seals
Elaine & Gary Shelton
Mary F. Smith
Kathy Sokolic
Julia Spann
Nancy Jo & George Spaulding
Kathryn A. Stanley
Kent Stewart
Gene & Joyce Stouder
Mary Sullivan
Jerry & Sarah Tapley
Ann & Randy Teich
Mary L. Buchanan Treuter
Jill Tubbs
Bob & Ardyth Urquhart
Mary Walcutt
James & Gayle Wall
Martha Wallace
Bill & Lois Watson
Kirby C. Watson
Joe & Mary Margaret Wells
Hester White
Linnea Wilkes
John & Joyce Wilson
Steven & Nancy Young
Les Young

JOIN US FOR OUR 20TH ANNIVERSARY SEASON!

For our 20th season we're celebrating the human connections at the heart of live theatre.

From one of literature's greatest partnerships to a perfect love story to the heartbreaking and breathtaking moments that bring us together. We'll have it all on stage this year.

Plus as a subscriber you'll enjoy the best seats, the best prices, easy scheduling, and discounts on special events!



We invite you to join us as a subscriber for this unforgettable season.

Visit the box office, Call **512-476-0084**, or online at **www.austinplayhouse.com**



Cultural Arts

CITY OF AUSTIN
ECONOMIC
DEVELOPMENT

This project is supported in part by the **Cultural Arts Division** of the City of Austin Economic Development Department.