

ZACH

T H E A T R E

DAVE STEAKLEY, PRODUCING ARTISTIC DIRECTOR
& ELISBETH CHALLENGER, MANAGING DIRECTOR
PRESENT

BECKY'S NEW CAR

Written and Directed by STEVEN DIETZ

Set Design MICHAEL RAIFORD
Lighting Design..... JASON AMATO
Costume Design ARIANA SCHWARTZ
Sound Design CRAIG BROCK
Properties Master CHRIS COGSWELL
Assistant Director..... COURTNEY SALE
Stage Manager..... AMANDA GASS*

**Member Actors' Equity Association*

June 3 - July 11, 2010 • ZACH Theatre's Whisenhunt Stage

TITLE SPONSOR:



Mercedes-Benz of Austin

ACKNOWLEDGEMENTS

BECKY'S NEW CAR was commissioned and originally produced by ACT Theatre in Seattle, Washington, and was part of the New Works for American Theatre in honor of Benita Staadecker, Kurt Beattie, Artistic Director; Susan Trapnell, Managing Director. BECKY'S NEW CAR by STEVEN DIETZ is presented by arrangement with **Dramatists Play Service, Inc.**, in New York. ZACH Theatre is a member of **ACTORS' EQUITY ASSOCIATION**, the union of professional actors and stage manager in the United States; and a Constituent Member of **THEATRE COMMUNICATIONS GROUP (TCG)**, the prestigious association of professional theatres nationwide.

CAST

BECKY'S NEW CAR

(In order of appearance)

LAUREN LANE*	Becky Foster
JOSH MEYER	Chris Foster
CHRIS GIBSON	Joe Foster
BEN PRAGER*	Steve
LUCIEN DOUGLAS*	Walter Flood
SYDNEY ANDREWS	Kenni Flood
BABS GEORGE*	Ginger

* Member Actors' Equity Association

There will be one 15-minute intermission.



Any taping, filming, recording, or broadcast of this play (musical or otherwise) and the taking of photographs, with or without flash, or by camera phone, is strictly prohibited.

Drinks are welcome in the theatre, but no snacking please. Remember to turn off your cell phone and/or pager prior to the show.

ZACH's \$20 Wednesday Night Series
for this production is sponsored by ...



About the Company



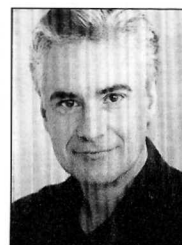
LAUREN LANE* (*Becky*) – was last seen at ZACH in *The Clean House*, for which she received a B. Iden Payne nomination for “Best Actress in a Drama.” In 2009, she won the B. Iden Payne award for “Best Actress in a Comedy” for her work as Sue in *House of Several Stories*. She has worked extensively in regional theatre, she was a company member in Tim Robbins’ award winning Los Angeles-based theatre company - The Actors Gang - where she won a Drama-Logue award for her work in *Electra* directed by Oskar Eustis. She has also worked at Actors Theatre of Louisville, Berkeley Repertory Theatre, The Mark Taper Forum, The American Conservatory Theatre, and Dallas Theatre Center, among others. For six seasons, she played C.C. Babcock on the television show, *The Nanny*. She also played the female lead, Chris Novak, on the detective show *Hunter*, as well as a recurring role on L.A. LAW. Most recently, Lauren was seen at The Kennedy Center in *Nebraska at Noon* and *Two Socks Discuss Loss* as part of the acting company of The American College Theatre Festival. Lauren graduated from the MFA program at The American Conservatory Theatre. She is an Assistant Professor at Texas State University and lives with her daughter Kate in Austin. Lauren is represented by Collier Talent.

* Member Actors’ Equity Association

JOIN THE CONVERSATION!
[TWITTER.COM/ZACHTHEATRE](https://twitter.com/ZACHTHEATRE)
[FACEBOOK.COM/ZACHTHEATRE](https://facebook.com/ZACHTHEATRE)
WWW.ZACHTHEATRE.ORG/BLOG



About the Company



LUCIEN DOUGLAS* (*Walter*) – BROADWAY: *Medea* with Zoe Caldwell and Dame Judith Anderson; OFF-BROADWAY: *Naked*, *Family Business*, *Candida*, and *Rosencrantz and Guildenstern Are Dead*. REGIONAL: Many! TELEVISION/FILM: *Walker*, *Texas Ranger*, *One Life to Live*; *Another World*; *Hallmark Hall of Fame* (with Faye Dunaway); *Miss Congeniality*; *Man of the House*; *Sno Cone Stand*. ADDITIONAL CREDITS: Professor of Acting/Directing at the University of Texas at Austin: recipient of 2000 Texas Excellence Teaching Award and 2010 Department of Theatre & Dance Teaching Excellence Award. Member of the TETA Adjudicators’ Organization, conducting annual workshops for approximately 25 high school drama programs. He has been a Guest Director at The Juilliard School; North Carolina School of the Arts; New York University; Penn State University; St. Edward’s University; and Southwestern University. Last spring 2009, he directed *Long Day’s Journey Into Night* in Austin. OTHER: PhD, Michigan State University; BFA, University of Connecticut; certificate of professional training, Royal Academy of Dramatic Art.

* Member Actors’ Equity Association

Unique, Heart-of-Downtown Austin Stages for Your Event



Host Your Next Private Event at ZACH!

Corporate Events • Pre-Show Receptions • Parties and Weddings



For more info, email privateevents@zachtheatre.org
 or call Amanda Adams at (512) 476-0541, x235

About the Company



SYDNEY ANDREWS (*Kenni*) – AT ZACH: *Love, Janis* and *Doubt*. REGIONAL THEATRE: *An Ideal Husband* at Austin Shakespeare Theatre, *James and the Giant Peach* at Berkshire Theatre Festival, *The Canterville Ghost* at the Children's Theatre of Charlotte, and *The Allegory of Whiteness* at the Farm Theatre. FILM: *Artois the Goat*. OTHER THEATRE: *The Death of Beth*, *Tides of Aberdeen*, *Pride and Prejudice*, *A Midsummer Night's Dream*, and *Big Love* at the University of Texas at Austin; *The Crucible*, *The Spitfire Grill*, *Uncle Vanya*, and *Picnic* at Greensboro College. ADDITIONAL CREDITS: M.F.A. from the University of Texas at Austin, B.A. from Greensboro College.



BABS GEORGE* (*Ginger*) – AT ZACH: *The Sisters Rosensweig* (1994-95 Season). REGIONAL THEATRE: A professional actress for 30 years, she has worked in Oregon, New Mexico, Utah, Michigan, and Indiana. A resident of Austin for 22 years, she has been seen at Austin Shakespeare, Austin Playhouse where she is a company member, St. Edwards University and TexArts. Recent television credits: *Friday Night Lights* and *My Generation* (a pilot for a new series). OTHER: M.F.A. in Classical Acting from The Shakespeare Theatre and The George Washington University. She is the creator and director of The State Theatre School of Acting. She has been an instructor in the Theatre Departments at St. Edward's University, The University of Texas and Texas State University.



CHRIS GIBSON (*Joe*) – joins ZACH for the first time. REGIONAL THEATRE: G.B. Shaw's *Misalliance* at The Austin Playhouse. Jason Neulander's *The Intergalactic Nemesis*, RoHo Theatre Co.'s *La Putain avec les Fleurs*, Dal Collective's *Leave it to Beverly!*

* Member Actors' Equity Association

About the Company



JOSH MEYER (*Chris*) – joins ZACH for the first time. REGIONAL THEATRE: *Dionysus in 69* and *I've Never Been So Happy* with Rude Mechanicals, *Mister Z Loves Company* and *A Thought in Three Parts* with Rubber Repertory, *A Brief History of an Extraordinary Birth of Rabbits* at Salvage Vanguard. OFF-BROADWAY: *Not Clown* at Soho Rep. FILM: *No Country for Old Men*, *In the Valley of Elah*, *The 2 Bobs*, *Lovers of Hate*. AWARDS: Screen Actors Guild Award, numerous B. Iden Payne and Austin Critics' Table Awards. ADDITIONAL CREDITS: Co-Artistic Director of Rubber Repertory Theatre.

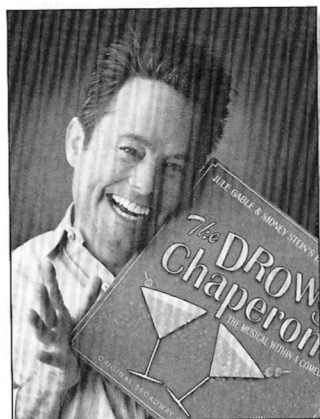


BEN PRAGER* (*Steve*) – AT ZACH: Mr. Stopnick in *Caroline, or Change*. ONE-MAN SHOWS: Ben has written/performed eight one-man shows of character monologues. He is a four time "Best of Fest" winner at FronteraFest. In 2009, his show *Things in Life* was nominated for three Austin Critics' Table Awards. Ben has performed his one-man shows at New City Theater, Empty Space, Tacoma Actors Guild, On the Boards, Bumbershoot Arts Festival and was featured on PBS's *Spotlight Series for the Arts*. REGIONAL THEATER: A Contemporary Theater, Seattle - World Premiere of *God's Country*, written by Steven Dietz. New City Theater, Seattle - *Eddie Goes to Poetry City, Part 1*, written and directed by Richard Foreman; *Pilgrim's of the Night* written and directed by Len Jenkin; and *Mud* written and directed by Maria Irene Fornes.

* Member Actors' Equity Association

IF YOU ENJOY THIS PERFORMANCE,
TELL FRIENDS AND SHARE THE FUN!

On Stage This Summer

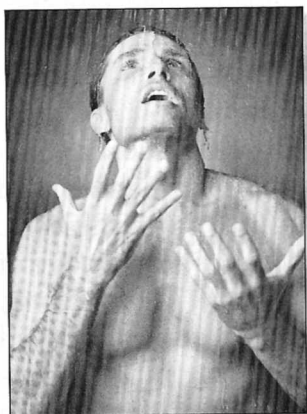


Martin Burke. Photo by Kirk Tuck

THE DROWSY CHAPERONE

Book by Bob Martin & Don McKellar
 Music by Lisa Lambert • Lyrics by Greg Morrison
 Music Direction by Allen Robertson
 Choreography by Robin Lewis
 Directed by Nick Demos
 Starring **Martin Burke**
 (Star of *The Santaland Diaries* & *Take Me Out*)
 with Jill Blackwood, Meredith McCall
 & Jamie Goodwin
 June 24-August 1, 2010

Welcome to the musical comedy with tons of laughs and the most 2006 Tony Awards of any musical on Broadway! Martin Burke stars as a die-hard musical fan who puts on his favorite cast album, a 1928 hit called "The Drowsy Chaperone," when the musical bursts to life.



David Christopher. Photo by Kirk Tuck

METAMORPHOSES

By Mary Zimmerman
 Directed by Dave Steakley
 August 5-September 12, 2010

With the audience seated intimately around a circular swimming pool, Ovid's myths about miraculous transformations are brought to exuberant and inventive life in the water by ZACH's ensemble of Austin actors in a visually stunning production. The transformational power of love, the inevitability of change, and the human ability to adapt are all

explored in this humorous, moving and heart-felt adaptation of our shared cultural myths.



NATIONAL
 ENDOWMENT
 FOR THE ARTS

A great nation
 deserves great art.

Charge Tickets by Phone or Web!
476-0541, x1 or www.zachtheatre.org

Great Savings on Wednesdays and for Groups of 8 or more! Groups call Amanda at ext: 221.

From The Director

*"We are given two lives:
 the one we learn with,
 and the life we live after that."*

— Bernard Malamud

On the occasion of my fiftieth birthday a few summers ago, my best friend stood and made a toast in which he welcomed me to "the age at which a person becomes invisible." If the great gift of age is wisdom, its downfall is surely a continuing daily erosion of attention. Remember when you used to turn heads? Impact a room? Remember when you were a "Miss" and not a "Ma'am"?

Becky Foster is a woman of a certain age. She has an okay life. She's blessed with a good husband and son, she works a decent job and, wait a minute: *is that all there is?* How does our relentless search for "security" land us in a life that is far less than the one we imagined? And, if offered a way out – if offered a chance at another life ... would we take it?

These questions were in my mind when I sat down to write a play commissioned by Seattleite Charles Staadecker as a birthday gift for his wife, Benita. I didn't know what would happen to Becky – or where her new road would lead – but I knew that the vehicle of transport needed to be a comedy.

Comedy is a high-wire act and that's precisely what I wanted Becky to have to pull off as her life spun dizzily out of control. Most playwrights will tell you that any long rainy weekend with a working computer and a modicum of liquid refreshment can produce a "drama," however good or bad. No plays are easy to write, but in my experience the bar (set by you, the audience) is *so much higher* for a comedy: the road to your mind and your funny bone being much more treacherous and unpredictable than the road to your sympathetic emotions. To my mind, an ensemble comedy is the theatre's gold standard. One reason "they don't write 'em like they used to" is that writing 'em like they used to is really, really hard.

I'm extremely grateful to bring this play "home" to Austin after its many sojourns around the country. And I'm doubly thrilled to place it in the hands of the amazing performers you will see tonight.

Thanks for being here. And drive safely.

— Steven Dietz
 21 May 10, Austin

ZACH Leadership



DAVE STEAKLEY (*Producing Artistic Director*) – Dave is dedicated to creating a place where our community gathers for a collective imaginative act. Now in his 19th season, he invites and celebrates the diversity of voices that make Our Town such a unique and energizing place to live. Dave believes theatre offers an arena in which we might be challenged to understand not just our own lives, but also the world in which we live, and is committed to creating plays and musicals that open meaningful conversations on topics that have resonance in our community. Dave has led ZACH to unprecedented audience growth with artistic and organizational excellence:

WORLD PREMIERES

- New plays by Anna Deavere Smith, Steven Dietz, Everett Quinton, John Walch, Allen Robertson & The Flaming Idiots
- *365 Plays/365 Days* by Suzan-Lori Parks. ZACH served as the Austin hub and produced the opening & closing weeks of a nationwide, year-long festival
- *Jesucristo Superestrella/Jesus Christ Superstar*, ZACH created the first bi-lingual adaptation of Andrew Lloyd Webber and Tim Rice's landmark musical
- The Gershwin's *Porgy and Bess*, a jazz and R&B reinvention featuring an all-new score set in Katrina ravaged New Orleans, which received national acclaim from *The New York Times* and the Gershwin Estate

PRODUCER, DIRECTOR & CHOREOGRAPHER ON OVER 250 ZACH PRODUCTIONS INCLUDING:

Our Town, *The 25th Annual Putnam County Spelling Bee*, *The Grapes of Wrath*, *Caroline, or Change*, *The Clean House*, *Take Me Out*, *Present Laughter*, *I Am My Own Wife*, *Urinetown*, *Crowns*, *Omnium-Gatherum*, *Hair*, *The Pavilion*, *The Laramie Project*, *Hedwig*, *Jelly's Last Jam*, *Jou  t*, *The America Play*, *The Who's Tommy*, *Dreamgirls*, *The Rocky Horror Show* starring Joe York, *Full Gallop* starring Karen Kuykendall, *The Mystery of Irma Vep*, *Angels In America* and *Beehive*

REGIONAL DIRECTING CREDITS

Actors Theatre of Louisville, New Stage Theatre, American Heartland Theatre, WaterTower Theatre, City Theatre and Downstairs Cabaret

PLAYWRIGHT

- *Rockin' Christmas Party*, ZACH's annual holiday tradition that is also performed at theatres nationwide
- *Keepin' It Weird*, a play about Austin's unique character featured on CBS Sunday Morning, NPR, *The Wall Street Journal* and *American Theatre*

SERVICE TO THE THEATRE FIELD

- National Endowment for the Arts Theatre Panelist
- Texas Commission on the Arts Young Masters Program Panelist
- National Alliance for Musical Theatre New Works Committee
- The University of Texas, St. Edward's University guest lecturer

(continued to next page)

ZACH Leadership

RECOGNITION

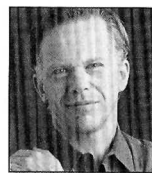
- 2005 Austin Circle of Theaters Special Recognition Award for "Outstanding Contribution to Austin Theatre"
- City of Austin declares May 18, 2001 as "Dave Steakley Day" in recognition of his tremendous support of professional theatre in Central Texas
- *Austin Chronicle* "Best of Austin" Readers Poll "Best Stage Director" six times
- Multiple Austin Critics' Table and B. Iden Payne Awards for Outstanding Musical, Drama, Comedy, Director, Actor, Choreographer and Design
- 2000 Austin Under 40 Outstanding Arts & Entertainment Award
- *Austin Chronicle* "10 Best Productions of the Decade" selected Dave's productions of *The Gospel At Colonus* and *Ruthless! The Musical*



ELISBETH CHALLENGER (*Managing Director*) – joined ZACH Theatre as Managing Director in 2007 after having served as a non-profit consultant and the Executive Director of One World Theatre since moving to Austin. As ZACH's Managing Director, Elisabeth is responsible for a \$20M capital campaign towards the building of a new theatre as well as the management, development and finances of the organization. Under her guidance ZACH has just completed a Five Year Strategic Plan that will move the organization into the next phase of its significant expansion. Prior to Austin, she resided in the San Francisco bay area where she was Montalvo Arts Center's Executive Director, spending nearly 20 years with the organization. As Executive Director, Elisabeth led Montalvo's growth from a small, community-based organization into a major presenting venue and home to an internationally acclaimed artists' residency program. Other accomplishments during her tenure included increasing ticket sales from less than \$500K to more than \$4 million, expanding the patron base from 6,000 to 80,000, and raising more than \$20 million for capital projects. Earlier in her career, she served as Administrative Director for the San Francisco Boys Chorus, Education/Outreach Director of the Fairmount Theatre of the Deaf, and as department chair and faculty member of the performing arts department of The Purnell School in New Jersey. Elisabeth graduated from the Boston Conservatory of Music with a bachelor's degree in fine arts in drama and musical theatre. She attended the Harvard Business School Executive Education Program, Center for Excellence in Nonprofit Management Leaders Institute in San Jose, Calif. and served in leadership roles for the American Leadership Forum, Silicon Valley, Saratoga Rotary Club, Junior League of San Jose and the Downtown Austin Alliance Parks Committee. She is currently serving on the National Alliance of Musical Theatre Festival Committee. Elisabeth has always had a passion for the theatre and performed for many years in summer stock, dinner theatre, and semi-professional productions on the east coast and in California.

JOIN ZACH THEATRE ON FACEBOOK.COM

About the Artistic Staff



STEVEN DIETZ (*Playwright/Director*) – is pleased to return to ZACH, where he has previously directed *Doubt* and the world-premiere of his play, *Shooting Star*. Since 1983, Mr. Dietz's thirty-plus plays and adaptations have been seen at over 100 regional theatres, as well as Off-Broadway and internationally. His work has been translated into ten languages. Mr. Dietz received the Kennedy Center Fund for New American Plays Award for his plays *Fiction* (produced Off-Broadway by the Roundabout Theatre Company), and *Still Life with Iris*; the Edgar® Award for "Best Mystery Play" for *Sherlock Holmes: The Final Adventure*; the PEN USA West Award in Drama for *Lonely Planet*; and the Yomiuri Shimbun Award (the Japanese "Tony") for his adaptation of Shusaku Endo's *Silence*. Recent work includes the National New Play Network featured play, *Yankee Tavern*; the Pulitzer-nominated *Last of the Boys*; and the upcoming baseball play, *Jackie & Me* (adapted from Dan Gutman). Mr. Dietz has directed premiere productions of new plays at numerous American regional theatres, including Actors Theatre of Louisville's Humana Festival, Seattle Repertory Theatre, Denver Center Theatre Company, Northlight Theatre (Chicago), City Theatre Company (Pittsburgh), Westside Arts (Off-Broadway), and the Sundance Institute. Mr. Dietz and his family divide their time between Seattle and Austin, where he teaches playwriting at the University of Texas.



MICHAEL RAIFORD (*Set Design*) - is a freelance scenic and costume designer based in Austin, Texas. Michael has been a designer at Zach Theatre for over 15 years where he has designed over 90 productions. Zach projects include: *The 25th Annual Putnam County Spelling Bee*, *Let Me Down Easy*, *Caroline, or Change*, *The Clean House*, *Porgy and Bess*, *Jesus Christ Superstar/Jesucristo Superestrella*, *Take Me Out*, *Urinetown*, *The Exonerated*, *I Am My Own Wife*, *Keepin' It Weird*, *Crowns*, *The Laramie Project*, *Aida*, *The America Play*, *Hank William Lost Highway*, *Cabaret*, *Ain't Nothin' But the Blues*, *Limonade Tous Le Jours*, *Smokey Joe's Café*, *Hair*, *Hedwig*, *The Pavilion*, *Evita*, *Tru*, *The Rocky Horror Show* (1999 & 2006), *Angels in America* (Parts I and II) and so many versions of costumes and sets for *Rockin' Christmas Party*, we quit counting! Michael is now in his third season at the Humana Festival of New American plays at Actors Theatre of Louisville. His designs have included sets for the premiere of Craig Wright's new play *The Unseen* and Carlos Murillo's *Dark Play or Stories for Boys*. Also at Actors Theatre, Michael designed Costumes and Video for *Jouët*, which was first produced at ZACH where he designed the sets and video. Other favorite Regional Theatre projects include: *Well* and *The Chosen* at Cleveland Playhouse; *Give 'em Hell Harry* and the US premiere of *The Young Lady from Rwanda* at Kansas City Repertory Theatre; *Guys and Dolls* at the Maltz Jupiter Theatre in Florida; *The Fantastiks* at Ford's Theatre in Washington DC; and *What Goes Up* at the New Victory Theatre in NYC. Other Austin Projects include *Rigoletto* for Austin Lyric Opera; *Big Love* and *Tesla* for the Rude Mechanicals.

About the Artistic Staff



JASON AMATO (*Lighting Design*) – Jason's career has spanned 15 years, designing over 450 local and international shows. In addition to designing at ZACH for 10 years, he is the resident lighting designer for Austin Shakespeare, Blue Lapis Light and the Vortex. Recent shows at ZACH: *Our Town*, *The 25th Annual Putnam County Spelling Bee*, *The Grapes of Wrath*, *Shooting Star*, *Beehive* and *Caroline, or Change*. The Austin Critics' Table Awards has honored Jason for outstanding lighting in 25 shows. He has also received *B. Iden Payne Awards* for his lighting of *Troades*, *Trickster*, *The Exonerated*, *Omnium-Gatherum*, *Triskelion*, *Panoptikon*, *Despair's Book of Dreams* and *The Deluge*. In 2008, Jason received the "Outstanding Contribution to Austin Theater" award from Austin Circle of Theaters. You can view his work at www.jasonamato.com.



ARIANA SCHWARTZ (*Costume Design*) – joins ZACH for the first time as costume designer with *Becky's New Car*. OTHER THEATRE: *Still Life with Iris*, *Pride and Prejudice*, *Br'er Wood*, and *The Shadow Box* at the University of Texas, Austin. FILM: *Overpass* and *Falconer*. ADDITIONAL CREDITS: M.F.A. from University of Texas, Austin.



CRAIG BROCK (*Sound Design*) – A freelance audio engineer since 1989, he also works as a recording engineer and music producer. At ZACH Theatre: *Our Town*, *Flaming Idiots*, *The 25th Annual Putnam County Spelling Bee*, *Love, Janis*, *The Grapes of Wrath*, *Let Me Down Easy*, *Shooting Star*, *Caroline or Change*, *The Clean House*, *Altar Boyz*, *Porgy and Bess*, *Speeding Motorcycle*, *Seussical*, *High School Musical*, *Jesus Christ Superstar/Jesucristo Superestrella*, *Plaid Tidings*, *An Almost Holy Picture*, *Take Me Out*, *Rocky Horror Show*, *I Am My Own Wife*, *Urinetown*, *Hank Williams: Lost Highway*, *Rockin' Christmas Party*, *The Santaland Diaries*, *Crowns*. REGIONAL: *Evil Dead*, *The Music Man*, *Romeo & Juliet*, *Starlight Express*. Album credits include: El Tri, Mana, Luis Miguel, Michael Jackson, Ray Charles, Barbra Streisand, Guns & Roses, David Crosby, Stephen Stills.



CHRISTOPHER COGSWELL (*Properties Master*) – joined ZACH Theatre in 2008. AT ZACH: Properties Designer for *Our Town*, *Rockin' Christmas Party 2010*, *The 25th Annual Putnam County Spelling Bee*, *Love Janis*, *Grapes of Wrath*, *Shooting Star*, *Let Me Down Easy*, *Caroline or Change*; and Properties Master for the *Flaming Idiots*, *The Santaland Diaries*, *Beehive*, and *Rockin' Christmas Party 2009*. Also, Designer and builder of ZACH's new prop rental, Milky White from *Into the Woods*. Photos are available online at www.zachtheatre.org. TELEVISION: Properties design for Discovery Channel; *Impaled*. OTHER THEATRES: *Mary Stewart*, *Music Man*, *Black Bird*, *the Hallow*. COLLEGE: *Anything goes*, *Pride and Prejudice*, *Tempest*, *Treasure Island*, *The Pirates of Penzance*, *Anna in the Tropics*.

About the Artistic Staff



COURTNEY SALE (*Assistant Director*) – marks her first ZACH production with *Becky's New Car*. As Co-Artistic of New York City's The Management, she directed several productions including *Aloha*, *Say the Pretty Girls*, *The Scandal!* (New York Innovative Theater Nominee) and *The Chalk Boy* (Co-production in Los Angeles). Courtney holds a BFA from Cornish College of the Arts and is currently a 2nd year MFA Directing Candidate at the University of Texas.



PAUL FLINT (*Director of Production*) – joined ZACH Theatre in 2008. He earned his Bachelor of Fine Arts from Shorter College and Master of Fine Arts from Southern Illinois University Carbondale with a focus on Technical Direction, Scenic Design and Arts Management. He has over ten years experience in technical theatre and has worked as a Technical Director for eight years. His theatre credits include the Alliance Theatre in Atlanta, Ga., Glimmer Glass Opera in Coopers Town, N.Y., Vitalist Theatre Company in Chicago, Ill. and a founding member of Seaside Repertory Theatre in Seaside, Fla.. Paul is the author of *Managing the Creative Mind: A Technical Director's Process*.



BLAIR HURRY (*Costume Shop Manager*) – grew up in Austin and studied Costume Design and Technology at the University of Texas. While attending UT, she designed costumes for *The Famous Rio Grande*, *The Trojan Women* and *Cabaret*. Her most recent costume design works include *Vampyress* for the Vortex Theatre, *Parade: A Musical* for St. Edward's University and *Shooting Star* for ZACH Theatre. She has built costumes for The Williamstown Theatre Festival, The Ohio Light Opera Company and STAGES: St. Louis. She returned to Austin after touring as Head of Wardrobe and Make-up for the national tour of Playhouse Disney's *The Doodlebops LIVE!* and the 2008 National tour of The Moscow Ballet's *The Great Russian Nutcracker*. She is an active member of the local 205 IATSE union.



AMANDA NADINE GASS* (*Stage Manager*) – AT ZACH: Assistant Stage Manager for *The Grapes of Wrath*. REGIONAL THEATRE: *Taming of the Shrew* at Illinois Shakespeare Festival. OTHER: *The Nina Variations*, *Intermission: Life in the In-between* and *Elektra* with Gobotrick Theatre. *Much Ado About Nothing*, *Frame 312*, *The Rover*, *The Exonerated* and *The Art of Dining* at Texas State University; *Orestes* with Cambiare Productions. OTHER CREDITS: M.A. from Texas State University.

* Member Actors' Equity Association

ZACH SOUVENIR TEE SHIRTS AVAILABLE
IN THE LOBBY. GREAT FOR SUMMER!