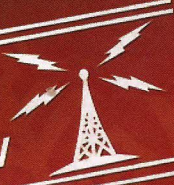


IT'S A
WONDERFUL
LIFE

A LIVE
RADIO PLAY



By JOE LANDRY. DIRECTED BY EMILY RANKIN

FROM OUR DIRECTOR

Repeat a word often enough and it becomes devoid of any real meaning. The same can be true for yearly traditions. Decorations, songs, and films can become automatic, reflexive. And *It's A Wonderful Life* is no exception. We know the story of George Bailey and Clarence the Angel. We recognize the little town of Bedford Falls. Most all of us remember how angels happen to get their wings. There's a tendency we seem to have to gloss over the difficult parts of this story and skip straight to the happy ending, which is why I think its message is so important to stop and consider.

Life for George Bailey is unexpected, unintended, and very often, disappointing. His dreams do not always come true. His plans for big, important deeds almost always fall by the wayside. George Bailey is us, in the deepest sense. No matter how we may try to force ourselves down a certain path, life has a way of scooping us off our feet and sending us where it will. But if we, like George, are able to see how much we matter to those people we hold dear, if we are able to let life carry us where it will and possibly even enjoy the ride, we might discover deeper joys than we could ever have planned.

It's A Wonderful Life is so much more than a Christmas tradition. Its message of hope, even in the face of the unexpected and the disappointing, is something to hold on to all year round.

-Emily Rankin, Director

Produced by special arrangement with Playscripts, Inc. (www.playscripts.com)

About Penfold Theatre Company

Penfold Theatre Company cultivates a love for live theatre in northern Travis and Williamson Counties by offering first-class, professional theatre performances and education programs. 2013-14 is the company's sixth season and features a variety of work from cherished classics to regional premieres: *RED* (September 2013), *It's a Wonderful Life: a live radio show* (December 2013), *Ordinary Days* (March 2014) and *Romeo & Juliet* (June 2014).



Penfold Theatre Company
www.penfoldtheatre.org
(512) 850-4849

Penfold Theatre Company presents

IT'S A WONDERFUL LIFE

A LIVE
RADIO PLAY

By Joe Landry

CAST

Ryan (George Bailey)	Ryan Crowder
Erin (Mary Hatch)	Erin Barlow
David (Potter and others).....	David R. Jarrott
Julia (Violet and others).....	Julia Lorenz Olsen
Robert (Clarence and others)	Robert L. Berry

PRODUCTION TEAM

Director	Emily Rankin
Stage Manager	Stephanie Delk
Costume Designer	Glenda Barnes
Sound Designer	Buzz Moran
Original commercials	Monica Ballard
Graphic Design and Photography	Kimberley Mead

PENFOLD THEATRE COMPANY

Producing Artistic Director	Ryan Crowder
Associate Artistic Director	Nathan Jerkins
Managing Director	Zena Vaughn

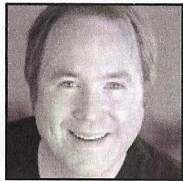
Board of Directors

Olivia Buffaloe, Robert Butler, Shawn Croft, Ryan Crowder, Debbie Dean, Sue Duncan, Nathan Jerkins, Jill Leberknight, Pauly Littrell, Ashley Morgan, Kristie Robles, Kari Taylor and Kathy Wright.

CAST



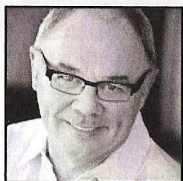
Erin Barlow (Mary) couldn't be happier to be working with Penfold for the first time. Other Austin credits include *Mad Beat Hip & Gone*, *Harvey* (ZACH Theatre); *I.C.U.* (FronteraFest); *The Cataract and Chronicles of Badass Women* (UT). In Chicago, she worked with LiveWireChicago Theatre, The Hypocrites, and Red Tape Theatre. Look for Erin this spring in Underbelly Theatre's *Church of the Passionate Cat*.



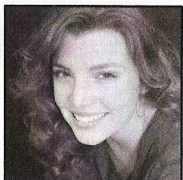
Robert L. Berry (Clarence and others) is excited to be working with Penfold Theatre once again after starring in this summer's *Shipwrecked!*. Most recently, Robert could be seen in The Baron's Men's *The Spanish Tragedy* as the villainous Villuppo. Robert will be going to DisneyWorld in February, so be sure to tell him how jealous you are.



Ryan Crowder (George) is co-founder and Producing Artistic Director of Penfold Theatre Company. Recent credits include *Red*, *Moonlight and Magnolias*, *Ghosts*, *Servant of Two Masters*, (Penfold), *Love's Labor's Lost* (Austin Shakespeare), *Rose Rage* and *Taming of the Shrew* (Hidden Room Theatre, Austin Critics' Table and B. Iden Payne Awards). Ryan holds an MFA from Ohio University. He thanks his wife, his family and his team at Penfold for their tremendous support.



David R. Jarrott (Potter and others) is thrilled to return for his third year with Penfold after appearing in *Harvey* (Zach Theatre) and *The Beautiful People* (UT). Other regional theatre credits include *Ragtime*, *Hairspray*, *Side Man* (Austin Critics' Table Nomination), and *The Speaker Speaks: An Evening With Sam Rayburn* (Austin Critics' Table Nomination). After four decades in radio, David was inducted into the Texas Radio Hall of Fame in 2011. His first novel, *Blood Moon*, will be available soon on Kindle.



Julia Lorenz Olsen (Violet and others) is thrilled to make her Penfold debut! Favorite credits include: *Sleeping Beauty* (Vortex), *Hamlet* (Black Swan) and *25th Annual Putnam County Spelling Bee* (Soubrette Productions). Later this season, Julia will appear in *The Fantastics* (JCC), *Assassins* (Soubrette Productions) and Penfold's *Romeo & Juliet*. She holds a BA in Theatre from the University of Texas and would like to thank her family, friends and – above all – her husband Phillip for their support.

PRODUCTION TEAM

Glenda Barnes (Costume Designer) is so happy to be doing *It's A Wonderful Life* again! Other Penfold designs include *Red*, *Moonlight and Magnolias*, *The Pavilion*, *I Love You Because*, *Going With Jenny*, *John & Jen*, *Three Days of Rain* and *The Last Five Years*. Some of her favorite production companies (other than Penfold) include Doctuh Mistuh, Cap T, Hyde Park Theatre, Street Corners Arts, Austin Playhouse, Texas State University and Summer Stock Austin. Glenda received her BFA in Costume Design and currently works at Texas State University as a guest lecturer and being "crafty" in the costume shop!

Stephanie Delk (Stage Manager) is happy to close 2013 with *It's a Wonderful Life*. She splits her theatre time with Penfold (*Red*, *A Minister's Wife*, *The Pavilion*) & The Hidden Room Theatre (*Taming of the Shrew*, *Rose Rage*, *Invisible Inc*). Stephanie is a new member of the B Iden Payne Nominating Committee. She is also a singer/songwriter and holds a degree in Music Business and Management from Berklee College of Music.

Emily Rankin (Director) is honored to be directing such a talented, wonderful group of people and is thrilled to be returning to Penfold after working with this summer's *Shipwrecked!* Recently, she's been involved with Austin-based companies like the Hidden Room Theatre and Present Company, for which she most recently stage managed *A Midsummer Night's Dream*. She'd like to thank Stephanie Delk for helping her stay sane, her fantastic cast and crew, and her wonderfully supportive family.

Buzz Moran (Sound Designer) has provided sounds for an exhausting number of Austin theatrical shows, including *Shipwrecked!*, *Ghosts* and *Going With Jenny* for Penfold. Buzz created and performs live sound effects for *The Intergalactic Nemesis*, which tours nationally. Buzz is responsible for the sporadic Foleyvision at the Alamo Drafthouse, wherein odd foreign films receive new music, voices, and sound effects performed live in the theater, and he is the co-creator of The Dionysium, a monthly show featuring lectures, drinking, and debates. He has recorded, mixed, and produced several CDs, as well as various soundtracks with Graham Reynolds. Buzz is a Capricorn, if that is a real thing.

A SEASON OF GIVING

Would you help us bring more live, professional theatre to north Travis and Williamson counties? During the month of December, we're collecting donations for another year of first-class performances and education programs. To learn more, talk to us after the show or visit www.penfoldtheatre.org.

2013-14 SEASON

RED. September 2013.

Mark Rothko, the revolutionary twentieth century abstract expressionist, receives the art world's largest commission: to create a series of murals for The Four Seasons restaurant in the new Seagram building on Park Avenue. Under the watchful gaze of a threatening new generation of artists, Rothko labors to create an iconic work that will stand as a monument to his illustrious career, while doubts and fears of his own relevancy threaten to tear him apart.

It's a Wonderful Life: a live radio show. December 2013.

It's Christmas Eve 1946, and members of the KPNF radio station are coming together for a radio performance of *It's a Wonderful Life*. Watch as five actors bring the entire story to life, playing dozens of characters and performing live foley sound effects in the style of *A Prairie Home Companion*. With this imaginative re-telling, you'll fall in love with George Bailey and his timeless tale of despair, redemption and hope all over again.

Ordinary Days. March 2014.

From one of musical theatre's most exciting new composers comes *Ordinary Days* in its Texas premiere. A refreshingly honest and funny chamber musical about four young New Yorkers whose lives intersect as they search for fulfillment, happiness, love and taxis. *Ordinary Days* is a story for anyone who's ever struggled to appreciate the simple things in a complex world.

Romeo & Juliet. June 2014 (free performances in the park!)

Shakespeare's tale of young lovers swept into a catastrophic vortex of misunderstandings, secrets and fate is one of the most beloved stories of all time. In this fresh adaptation for five actors, Romeo and Juliet, the son and daughter of two noble families locked in an old feud, are irresistibly drawn to each other. Defying the hatred and distrust surrounding them, they dare to believe they can, and must, be together.

Upgrade your ticket to a partial season pass tonight!

SPECIAL THANKS

Sincerest thanks to our generous sponsor, the City of Round, as well as to all of our cameo guests, Bernadette Nason, Baylor University, the Old Settler's Association of Williamson County, Round Rock Arts, Round Rock Chamber of Commerce, Round Rock ISD and Round Rock Parks & Recreation Department.

p
Printology
Printing simplified.

*Wishing you a happy holiday season
and a wonderful new year*

PrintologyTX.com
(512) 248-2300



2013-2014 SIXTH SEASON

RED

Fall 2013

How will they remember you?

IT'S A WONDERFUL LIFE: A LIVE RADIO SHOW

Christmas 2013

This holiday season, rediscover hope.

ORDINARY DAYS

Spring 2014

Taxi cabs and the secret of happiness.

ROMEO & JULIETTE

Summer 2014

A love to die for.

