

DAVE STEAKLEY, Producing Artistic Director
and ELISBETH CHALLENGER, Managing Director

Co-Produced with Daniel Chlewich and Todd Gershwin of One Night Productions,
present

ONE NIGHT WITH JANIS JOPLIN

In association with the Estate of Janis Joplin and Jeffrey Jampol of JAM, Inc.

Created, Written & Directed by **RANDY JOHNSON**

Musical Direction by **ALLEN ROBERTSON**

ZACH Theatre's Production is Co-Produced with **SAN JOSE REPERTORY THEATRE**
Rick Lombardo, Artistic Director Nick Nichols, Managing Director

Scenic Design.....**CLIFF SIMON**
Lighting Design.....**MATTHEW WEBB**
Costume Design.....**SUSAN BRANCH TOWNE**
Projection Design.....**COLIN LOWRY**
Sound Design.....**CRAIG BROCK**
Properties Design.....**SCOTT GROH**
Hair & Makeup Design.....**WILLA KAYE WARREN**
Assistant Director.....**TYLER RHODES**
Stage Manager.....**CATHERINE ANNE TUCKER***
Asst. Stage Manager.....**JESSIE DOUGLAS***

*Member of Actors' Equity Association, the union of professional actors and stage managers in the United States.

July 10 - August 18, 2013 • Topfer Theatre • Karen Kuykendall Stage

PRESENTING SPONSOR:  **BROADWAY BANK**
We're here for good.

PRODUCER'S CIRCLE SPONSORS: Carolynn Bartlett • Joan and Jeff Lava

ACKNOWLEDGEMENTS

Co-Produced in 2012 by **Cleveland Play House**
Michael Bloom, Artistic Director Kevin Moore, Managing Director

Co-Produced in 2012 by **Arena Stage**
Molly Smith, Artistic Director Edgar Dobie, Executive Director

The 2011 World Premiere of ONE NIGHT WITH JANIS JOPLIN was produced by and performed at
Portland Center Stage, Portland, OR Chris Coleman, Artistic Director

ZACH Theatre operates under a Small Professional Theatre contract with Actors' Equity Association, the union of professional actors and stage managers in the United States; ZACH Theatre is a Constituent Member of Theatre Communications Group (TCG), the prestigious association of professional theatres nationwide; and an organizational member of the National Alliance for Musical Theatre (NAMT).

Cast

ONE NIGHT WITH JANIS JOPLIN

Janis Joplin.....	KACEE CLANTON*
The Blues Singer.....	TIFFANY MANN*
Lead Joplainaire	TRICKY JONES
Joplainaire.....	FELICIA DINWIDDIE
Joplainaire.....	CARI HUTSON*

*Member of Actors' Equity Association, the union of professional actors and stage managers in the United States.

MUSICIANS:

Musical Director/Keyboards	Allen Robertson
Guitar 1	Hunter St. Marie
Guitar 2.....	Paul Koudouris
Bass.....	Will Krause
Drums	Harrell Williams
Tenor Sax	Tony Bray
Trumpet 1.....	Rick White
Trumpet 2.....	Shane Walden

There will be one twenty-minute intermission.

Visit ZACH's Bar! Drinks with lids are welcome inside the theatre.

**Janis Joplin shares the stage with "The Blues Singer,"
who represents the artists that influenced her, including:**

BESSIE SMITH (1894-1937) – Earned the title of "Empress of the Blues" by virtue of her forceful vocal delivery and command of the genre. She was the highest-paid Black performer of her day and arguably reached a level of success greater than that of any African-American entertainer before her.

ETTA JAMES (1938-2012) – The blues, soul, jazz, R&B and rock vocalist who forged a five-decade career with an alternately powerful and poignant voice gracing more than a dozen hit singles and earning her four GRAMMY® Awards and a prominent place in the Rock and Roll Hall of Fame.

NINA SIMONE (1933-2003) – Was one of the most gifted vocalists of her generation, and also one of the most eclectic. The American songwriter, arranger and painter sang a mix of jazz, blues and folk music in the 1950s and '60s, and as a civil rights activist, wrote songs promoting the movement.

Musical Numbers

Act I

- Combination of the Two/Tell Mama**..... Janis Joplin, Joplinaires & Blues Singer
 "Tell Mama" published as "Tell Daddy," written by Terrell, Clarence Carter & Marcus Daniel; all rights administered by EMI Music Publishing, LLC. "Combination of the Two," written by Sam Andrew; all rights reserved, used by permission.
- My Baby**..... Janis Joplin
 Written by Jerry Ragovoy & Mort Shuman, 1966 (renewed) Unichappell Music, Inc. (BMI) and Mort Shuman Songs (BMI); all rights on behalf of Mort Shuman Songs administered by Warner-Tamerlane Publishing Corp.; all rights reserved; used by permission.
- Maybe**..... Janis Joplin, Joplinaires & Blues Singer
 Written by Richard Barrett; all rights administered by EMI Music Publishing LLC; all rights reserved; used by permission.
- Summertime**..... Blues Singer & Janis Joplin
 Written by George Gershwin, DuBose Heyward, Dorothy Heyward & Ira Gershwin; 1935 (renewed) George Gershwin Music (ASCAP), DuBose and Dorothy Heyward Memorial Fund Publishing (ASCAP) & Ira Gershwin Musical (ASCAP); all rights administered by Wb Music Corp.; all rights reserved, used by permission.
- Bye Bye Baby**..... Orchestra
 Written by Powell St. John; published by Mainspring Watchworks Music (ASCAP); under license from The Bicycle Music Company.
- Turtle Blues**..... Janis Joplin
 Written by Janis Joplin; published by Strong Arm Music (ASCAP); all rights reserved, used by permission.
- Down on Me**..... Blues Singer & Janis Joplin
 Written by Janis Joplin; published by Strong Arm Music (ASCAP); all rights reserved, used by permission.
- Piece of My Heart**..... Janis Joplin & Joplinaires
 Written by Bert Berns & Jerry Ragovoy; 1967 Sony/ATV Music Publishing LLC, Sloopy II Music, Warner-Tamerlane; all rights on behalf of Sony/ATV Music Publishing LLC administered by Sony/ATV Music Publishing LLC, 8 Music Square West, Nashville TN 37203; all rights reserved, used by permission.
- Today I Sing the Blues**..... Blues Singer
 Written by Curtis Lewis; published by Bess Music Company; all rights reserved, used by permission.
- Nobody Knows When You're Down and Out**..... Blues Singer
 Written by James Cox; published by Universal Music Publishing Group; all rights reserved, used by permission.
- A Woman Left Lonely**..... Janis Joplin
 Composed by Dewey Lindon Oldham & Dan Penn; 1971 Embassy Music Corp. (BMI) & Dan Penn Music (BMI); all rights reserved, used by permission.
- Spirit in the Dark**..... Blues Singer, Janis Joplin & Joplinaires
 Written by Aretha Franklin; published by Springtime Music, Inc.; all rights reserved, used by permission.



The videotaping or other video or audio recording of this production and the taking of photographs, with or without flash, or by camera phone, is strictly prohibited. Please turn off all electronic devices – such as cell phones, pagers, etc. – and refrain from texting and/or tweeting during the performance.

Musical Numbers

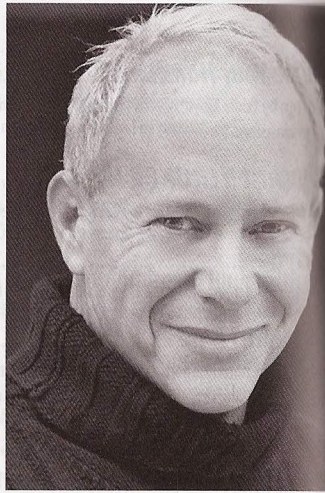
Act II

- Raise Your Hand**..... Orchestra
 Written by Eddie Floyd, Alvertis Isbell & Stephen Cropper; published by Universal Music Publishing Group; all rights reserved, used by permission.
- Try (Just a Little Bit Harder)**..... Janis Joplin
 Written by Jerry Ragovoy & Chip Taylor; 1968 (renewed) Unichappell Music, Inc. (BMI); all rights reserved, used by permission.
- Maybe**..... Janis Joplin
 Written by Richard Barrett; all rights administered by EMI Music Publishing LLC; all rights reserved, used by permission.
- Little Girl Blue**..... Blues Singer & Janis Joplin
 Music by Richard Rodgers, Lyrics by Lorenz Hart; this selection is used by special arrangement with Rodgers & Hammerstein, an Imagem Company, www.rnh.com; all rights reserved, used by permission.
- Cry Baby**..... Janis Joplin
 Written by Bert Berns & Norman Meade; 1963 Sony/ATV Music Publishing LLC, Sloopy II Music, Warner-Tamerlane; all rights on behalf of Sony/ATV Music Publishing LLC administered by Sony/ATV Music Publishing LLC, 8 Music Square West, Nashville TN 37203; all rights reserved, used by permission.
- Kozmic Blues**..... Orchestra
 Written by Janis Joplin & Gabriel Mekler; published by Strong Arm Music (ASCAP); all rights reserved, used by permission.
- I Shall Be Released**..... Blues Singer, Janis Joplin & Joplinaires
 Written by Bob Dylan; published by Dwarf Music; all rights reserved, used by permission.
- Me & Bobby McGee**..... Janis Joplin
 Written by Fred Foster & Kris Kristofferson; published by EMI-Blackwood Music Inc. for Combine Music Corp.; all rights reserved, used by permission.
- I'm Gonna Rock My Way to Heaven**..... Janis Joplin
 Words & Music by Jerry Ragovoy & Jenny Dean; published by The Tune Room, Inc.; all rights reserved, used by permission.
- Ball and Chain**..... Janis Joplin
 Written by Willie Mae "Big Mama" Thornton; Bro 'N Sis Music, Inc.; all rights reserved, used by permission.
- Kozmic Blues (reprise)**..... Janis Joplin
- Stay with Me**..... Janis Joplin, Blues Singer & Joplinaires
 Words & Music by George David Weiss & Jerry Ragovoy, 1966 published by Warner Chappell Music, renewed 1994 and assigned to Abilene Music LCC, c/o Larry Spier Music LCC, New York, NY; international copyright secured; all rights reserved including public performance, used by permission.
- I'm Gonna Rock My Way to Heaven (reprise)**..... Janis Joplin, Blues Singer & Joplinaires
- Piece of My Heart (reprise)**..... Orchestra
- Mercedes Benz**..... Janis Joplin
 Written by Janis Joplin, Michael McClure & Robert Neuwirth; published by Strong Arm Music (ASCAP); all rights reserved, used by permission.

Director's Notes

In these days where fame is instant and true musicianship rare, the word "artist" is an often-misused statement. As we are held hostage to a manufactured pop culture on a daily basis, I feel we must constantly revisit our history and explore the authentic forces that have shaped the landscape of our lives. One of those authentic forces is Janis Joplin.

There never has been, and never will be, another Janis Joplin. Her fame was earned – her following grew as she grew – as people were drawn to her and she was drawn to them. Janis Joplin was a true artist without contrivance or artifice. She was an extraordinary woman. People like to say "ahead of her time." I happen to believe she was right on time.



Randy Johnson

After immersing myself in the culture of Janis Joplin with Michael Joplin, Laura Joplin and Janis herself, the one prevailing message that kept coming back to me was the commonality of the paths and influences that guide and shape all of us and our spirit every day. I am constantly astonished and inspired by the depth of the wisdom she imparted in her music, her interviews, her writing and her art. All of us are influenced and shaped by artists, poets, musicians, thinkers and ordinary people. That's what creates new thought every day. Janis provoked a lot of thought by simply being herself.

At 3 a.m., one week after I had spent time with the Joplin family, I knew that this play would simply be *One Night with Janis Joplin*. It's a night where Janis (one more time) could share her music, truths, influences, art, philosophy and spirit. Janis lives on as most great artists eventually do: forever in the conscious collective. This isn't just Janis' story – it's all of our stories in one way or another. We all touch and inform each other as we travel this life. I trust that you, the audience, will take away with you a piece of Janis' heart.

The world is a better place because she was here for a moment.

– **Randy Johnson**

Playwright and Director of *One Night with Janis Joplin*

VISIT ZACH'S NEW FULL BAR! OPEN
90 MIN'S. PRE-SHOW, AT INTERMISSION
AND UPSTAIRS 1 HOUR POST-SHOW

About the Company



KACEE CLANTON* (*Janis Joplin*) – joins ZACH Theatre for the first time with this production. REGIONAL THEATRE: *Love, Janis* at San Diego Repertory Theatre and Kansas City Repertory Theatre. FILM/Soundtrack: *The Tooth Fairy* and *Kinsey*. FILM: *Mobsters*. TELEVISION/Soundtrack: *Brothers and Sisters*, *Fox Sports*, *Cribs*, *Open House New York*, *18 to Life*, *The Guiding Light*, *Star Search* and *Thirty Something*. TELEVISION/Appearance: *The Tonight Show*, *Regis & Kelly* and *Parkinson* (UK). OTHER THEATRE: *Your Town Follies* at El Portal Theatre, *Love, Janis* at Downstairs Cabaret Theatre, *Repatee '07* at Kansas City Repertory Theatre and *Bandage: The Rock Opera* at House of Blues. ADDITIONAL CREDITS: Toured as a vocalist with Big Brother & the Holding Company, Joe Cocker and Luis Miguel. CD releases: *Short on Time & Money* (EP), *Mama Came to Sing* and *Seeing Red*.



FELICIA DINWIDDIE (*Joplinaire*, *Blues Singer U/S*) – NATIONAL THEATRE: *Hairspray* (Original Toronto Company). AT ZACH THEATRE: *Ragtime*, *Little Shop of Horrors*, *Jelly's Last Jam*, *Ain't Misbehavin'*, *Schoolhouse Rock*, *Blues in the Night*, *The Gospel at Colonus*, *Das Barbecü*, *Beehive* ('91-'98 & '03), *Dreamgirls* ('95 & '97), *Rockin' Christmas Party* ('93-'03, '09), *Falsettos*, *Nonsense* and *Once on This Island*. REGIONAL THEATRE: *Giant Steps "An Urban Musical"* (Texas Musical Theatre Workshop), *The Good Times Are Killing Me* (Austin Theatre for Youth), *Beehive* (Downstairs Cabaret Theatre, Rochester, NY), *Little Shop of Horrors* (Broadway Austin), *Once On This Island* (Mill Mountain Theatre, Roanoke, VA) and *Big River* (FUMC). RADIO/TV: "Oprah Winfrey" in an episode of *Jimmy Kimmel Live!*, *Stories of the E.R.*, *Strong Medicine*, *Boston Public*, *Scrubs*, 50-Off Store commercial and other industrials for Ink Productions. OTHER: B. Iden Payne Award for "Featured Actress in a Musical" (*Dreamgirls*) and "Outstanding Lead Actress in a Musical" (*Ain't Misbehavin'*).



CARI HUTSON* (*Joplinaire*, *Janis Understudy*) – joins ZACH Theatre for the first time with this production. THEATRE: *Anything Goes* (Reno Sweeney) and *Hair* (Featured Vocalist) at Austin Community College, and *Blithe Spirit* (Mrs. Bradman) and the touring children's production *Emperor Toad*, *Queen Butterfly* at Southwest Texas State University. TV: *Spec's Wine & Spirits* (radio, soundtrack and TV commercial). OTHER CREDITS: Texas blues, rock singer and songwriter; *Austin Chronicle* Top 10 Best New Band.



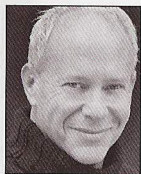
TRICKY JONES (*Lead Joplinaire*) – AT ZACH THEATRE: *The Drowsy Chaperone*; *Caroline, or Change*; *Porgy and Bess*; *The Rocky Horror Show*; *Crowns* and *Hair*. OFF BROADWAY: *Hair* at Theatre Row in The Acorn Theatre. OTHER THEATRE: *Amphibians* at The Blue Theatre, *I Love My Dead Gay Son* at The Off Center, *Children of Eden* at St. Matthews Episcopal Church and *Jesus Christ Superstar* at The Paramount Theatre in Austin; *Sweet Charity* at The Town and Country Theatre in Houston. ADDITIONAL CREDITS: Sings for the bands Jesse Vain and The Happy Hour Holy Movement, Rooster Jenkins and Mojo Queen.



TIFFANY MANN* (*Blues Singer*) – AT ZACH THEATRE: *Ragtime*, *Spring Awakening*, *Hairspray*, *Rockin' Christmas Party* and *Caroline, or Change*. REGIONAL THEATRE: *The Color Purple* (Celite), *Joseph and the Amazing Technicolor Dreamcoat* and *Dividing the Estate* at Dallas Theater Center. OTHER THEATRE: *Big River*, *Chicago*, *Rent*, *Ain't Misbehavin'* and *Lucia di Lammermoor*.

*Member of Actors' Equity Association, the union of professional actors and stage managers in the United States.

About the Artistic Staff



RANDY JOHNSON (*Creator, Writer & Director*) – is a graduate of the U.S.C. School of Theatre in Los Angeles. For more than three decades, he has produced, directed or written some of the most ground-breaking and landmark theatre, events and concerts on the world stage. Randy's work and direction has been seen in such diverse venues as regional theaters across the U.S. and Canada, Off-Broadway, the West End in London, Carnegie Hall, Radio City Music Hall, Wembley Arena, the Gibson Amphitheatre, Madison Square Garden, the Grand Ole Opry, L'Olympia in Paris and Le Sporting Club in Monte Carlo, Monaco. Randy began his career as a co-producer of the West Coast premiere of Larry Kramer's *The Normal Heart* starring Kathy Bates and Richard Dreyfus at the Las Palmas Theatre in Hollywood. He is the force behind theatrical stage portraits of such musical icons as Janis Joplin, Elvis Presley, Conway Twitty, Louis Prima and Keely Smith. Randy is the original producer of *Always...Patsy Cline*, which under his aegis became one of the most produced musicals in the United States; including the Off-Broadway production featuring Margo Martindale. He also executive produced the MCA cast album. Samuel French, Inc., has published Randy's playwright work, and he has directed such diverse artists as Audrey Hepburn, Katherine Hepburn, Carly Simon, Mike Tyson, Barbra Streisand, Elton John, Little Richard, Sandra Bernhard, Marianne Faithful, Michael Bolton, Garth Brooks, Shania Twain and John Mitchell. He directed Pope Benedict's recent New York appearance at Yankee Stadium featuring a special performance by Kelly Clarkson. He is the director of the historic *Elvis in Concert*, which debuted at Radio City Music Hall and has toured arenas around the world for more than 15 years. Both *Elvis in Concert* and Carly Simon's *Moonlight Serenade* aboard the Queen Mary 2 are available on DVD. He is the recipient of the Crystal Apple Award for his work with AIDS Project Los Angeles, "Volunteer of the Year" for L.A. Shanti and two ISES Awards as "Best Director" for his aerial ballets/events with Cirque du Soleil's choreographer Debra Brown. Randy is a member of the Dramatists Guild, the Society of Stage Directors and Choreographers and Canadian Actors' Equity Association (as a director). His autobiography, *Adventures in Hotel Crazy*, will be published in the fall of 2014. www.RandyJohnson1.com.



ALLEN ROBERTSON (*Musical Director*) – is an Emmy Award®-winning co-creator of the PBS children's show *The Biscuit Brothers*, as well as a co-producer, performer, writer, educational director and composer for the show. Allen is an award-winning musical director, composer, playwright, actor, director, sound designer and musician, and has worked on hundreds of productions from Chicago to Japan - including 20 years of shows at ZACH Theatre. New York credits include Radio City Music Hall and the Off-Broadway run of *The Flaming Idiots*. As a vocalist, he can be heard on several Disney Records, as well as on television and radio commercials. Additionally, he is a writer and composer with credits including many musicals, plays, television episodes, film scores and a ballet. He has been recognized by the City of Austin, the State of Texas Legislature, The American Society of Composers, Authors and Publishers (ASCAP), The Texas Music Educators Association, the Academy of Television Arts and Sciences and the National Association of Parenting Publications for his contributions to the arts.



CLIFF SIMON (*Scenic Design*) – has designed ZACH Theatre productions of *33 Variations*, *White Christmas*, *Dividing the Estate*, *Hair*, *The Grapes of Wrath*, *Present Laughter* (B. Iden Payne Award), *Seussical The Musical* and *House Arrest*. He also designed in New York City at the Truck and Warehouse Theater, Lamb's Club, Playwright's Horizons and T. Schreiber Studios; in New Jersey at the George Street Playhouse; at the Cleveland Play House; in Austin for Tapestry Dance, Rude Mechs and the Zilker Hillside Theatre; in Florida at the Riverside Theatre and Maltz-Jupiter; in Philadelphia at the Walnut Street; in Montana at Bigfork; and in Birmingham at Birmingham Children's

About the Artistic Staff

Theatre and at UAB, where he teaches Scene Design. He has also designed edibly painted cakes for the likes of Diana Ross and Madonna. www.CliffCakes.com.



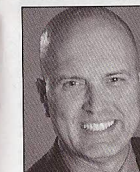
MATTHEW WEBB (*Lighting Design*) – is in his second season as ZACH Theatre's Lighting Supervisor. AT ZACH THEATRE: *Harvey*, *Goodnight Moon: The Musical*, *Deep in the Heart of ZACH* (featuring Brian Stokes Mitchell) and *If You Give a Mouse a Cookie*. REGIONAL THEATRE: *The 39 Steps*, *A Raisin in the Sun*, *Hamlet*, *Frost/Nixon*, *Cat on a Hot Tin Roof*, *The Elephant Man*, *Doubt*, *Bertrand Priest* and *It Happened in Little Rock* (cover of *American Theatre*, Dec. '07) at Arkansas Repertory Theatre; *Boeing-Boeing* at Phoenix Theatre. OTHER THEATRE: *Beauty and the Beast* and *Side by Side by Sondheim* at Stephen F. Austin State University; *Kate Crackernuts*, *The Magic Flute* and *Sleeping Beauty* at the University of Arkansas at Little Rock. www.MatthewWebbLighting.com.



SUSAN BRANCH TOWNE (*Costume Design*) – More than 20 ZACH Theatre credits including *Harvey*, *Ragtime*, *Xanadu*, *Hairspray*, *Dividing the Estate*, *The Drowsy Chaperone*, *The Laramie Project* and *Jesus Christ Superstar/Jesu Cristo Superestrella*. Other local designs include Ballet Austin's *The Magic Flute*; Austin Lyric Opera's *The Bat*; Zilker Theatre Productions' *The Sound of Music*, *The Music Man* and *Annie Get Your Gun*; and *The Crucible*, *The Pajama Game*, *Carousel* and several more at St. Edward's University, where she recently joined the faculty as Assistant Professor of Costume Design. Susan's over 200 professional credits include productions at Denver Center Theatre Company, Syracuse Stage, Alabama Shakespeare Festival, Pioneer Theatre Company, Utah Shakespearean Festival, Skylight Opera Theatre, New York City Opera, as well as Off-Broadway. Susan holds a B.F.A. from Carnegie-Mellon University and an MFA from the Yale School of Drama, and is a 26-year member of United Scenic Artists, Local 829.



WILLA KAYE WARREN (*Hair & Makeup Design*) – won a 2012 Austin Critics' Table Special Citation Award for "Monumental Tease" for her hair designs on ZACH's production of *Hairspray*. She has also designed hair for ZACH's productions of *White Christmas*, *Ragtime*, *Xanadu*, *Spring Awakening*, *August: Osage County*, *The Drowsy Chaperone*, *Caroline, or Change*, *Keepin' It Weird*, *Hank Williams: Lost Highway*, *Aida*, *Cabaret*, *Always...Patsy Cline*, *Beehive*, *Smokey Joe's Cafe*, *Dirty Blonde*, *Hair*, *Little Shop of Horrors*, *Jelly's Last Jam*, *Master Class*, *Joué*, *A Streetcar Named Desire*, *Evita*, *The Rocky Horror Show*, *The Mystery of Irma Vep*, *Ain't Misbehavin'*, *Angels in America*, *Tommy*, *Blues in the Night*, *The Taffetas*, *The Piano Lesson*, *Jack and Jill*, *Ruthless! The Musical*, *A Christmas Carol*, *Beehive*, *Rockin' Christmas Party* ('95-'05), *Avenue X* and *Das Barbecü*. Willa has been volunteering and working in the Austin arts community for more than 25 years.



COLIN LOWRY (*Projection Design*) – has designed video for ZACH Theatre since *Joué* in 2001. Some other favorite design credits include *The Book of Grace*, *Rent*, *The Laramie Project*, *Ragtime*, *33 Variations* and *Mad Beat Hip & Gone* (ZACH Theatre); *My Favorite Year* (Zilker Theater Productions); *Gyre*, *Flush*, *Everything Between and Geometry of Proximity* - 2013 Austin Critics' Table Award Nominee (Ariel Dance Theatre) and *Requiem for Tesla* and *How Late It Was How Late* - 2003-2004 Austin Critics' Table Award for "Video Design" (Rude Mechs.) Colin also produces/project manages live events/productions as well as designs/edits video/animated content for short subjects, advertising, live events, theatrical projection design and interactive museum installations. Extensive project profiles can be found at www.LineDash.com.

About the Artistic Staff



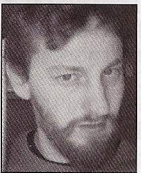
CRAIG BROCK (*Sound Design*) – is ZACH Theatre's Resident Sound Designer, in addition to working as a recording engineer and music producer since 1989. AT ZACH THEATRE: *Megan Hilty in Concert, Harvey, Mad Beat Hip & Gone, Tru, White Christmas, Ragtime, Xanadu, Dividing The Estate, The Laramie Project, The Laramie Project: 10 Years Later, Next to Normal, Rent, Metamorphoses, The Drowsy Chaperone, Becky's New Car, Our Town, Flaming Idiots, Spelling Bee, Love, Janis, The Grapes of Wrath, Let Me Down Easy, Shooting Star, Caroline, or Change, The Clean House, Altar Boyz, Porgy and Bess, Speeding Motorcycle, High School Musical, Jesus Christ Superstar/Jesucristo Superestrella, Take Me Out, Rocky Horror, I Am My Own Wife, Urinetown, Hank Williams: Lost Highway, Rockin' Christmas Party* and *The Santaland Diaries*. REGIONAL THEATRE: *Evil Dead, City of Angels, Dream, Annie, The Music Man* and *Starlight Express*. Album credits include: El Tri, Mana, Luis Miguel, Michael Jackson, Ray Charles, Barbra Streisand, Guns & Roses, David Crosby, Stephen Stills.



SCOTT GROH (*Properties Design*) – is excited to join the ZACH Theatre production crew with this production. NATIONAL TOURS: *Fiddler on the Roof, Blast!, All Shook Up* and *Arthur Live!*. REGIONAL THEATRE: Tuacahn Amphitheatre, The Lost Colony, Colorado Shakespeare Festival, SeaSide Music Theatre, La MaMa, Williamstown Theatre Festival and Porthouse Theatre.



TYLER RHODES (*Assistant Director*) – AT ZACH THEATRE: *Caroline, or Change* (Assistant Director), *Urinetown* (Assistant Director) and *Hair*. 1st NATIONAL TOURS/BROADWAY: *Guys & Dolls* (Associate Director), *Little House on the Prairie: The Musical* (with Melissa Gilbert), Garry Marshall's *Happy Days: The Musical* (Assistant Director); *Empire-Workshop/Readings* (Assistant Director). REGIONAL: *The Fabulous Lipitones* (Associate Director) and *Happy Days* (Assistant Director) at Goodspeed Musicals; *Hairspray, Pirates!, Seven Brides...*, *Happy Days, Godspell* (2010 Broadway), *Romance/Romance, Summer & Smoke* (with Amanda Plummer), *A Wonderful Life, Brian Stokes Mitchell in Concert* and *New Voices 2007/8* at Paper Mill Playhouse; LaChiusa's *Giant* at Signature; *Idaho!* (Assistant Director) at Forestburgh; *Hairspray* at NC Theater; four productions at Austin Musical Theatre; *West Side Story* (Baby John) at Zilker Summer Musical; and the Russian Tour of *Foxtales*. ADDITIONAL CREDITS: B.F.A. from Texas State University, member of Actors' Equity Association, and Austin Critic's Table and B. Iden Payne "Best Actor in a Musical" Awards for *Bat Boy* (Bat Boy) and *Pageant*.



JUSTIN J. SMITH (*Technical Director*) – is a recent addition to the ZACH Theatre family with this inaugural season of the Topfer Theatre. He has had the pleasure of working for the Heritage Theatre Festival in Charlottesville, VA, Summer Repertory Theatre in Santa Rosa, CA, and Trinity Repertory Company in Providence, RI. He earned his B.A. from Southwestern University and his M.F.A. from University of Virginia, Charlottesville, with a focus in Technical Direction.



PAUL FLINT (*Director of Production*) – joined ZACH Theatre in 2008. He earned his B.F.A. from Shorter College and M.F.A. from Southern Illinois University, Carbondale, with a focus on Technical Direction, Scenic Design and Arts Management. His theatre credits include the Alliance Theatre in Atlanta, GA, Glimmerglass Opera in Cooperstown, NY, Vitalist Theatre Company in Chicago, IL, and he is a founding member of Seaside Repertory Theatre in Seaside, FL. Paul is the author of *Managing the Creative Mind: A Technical Director's Process*.

About the Artistic Staff



BLAIR HURRY (*Costume Shop Manager*) – is an Austin native and graduated from the University of Texas at Austin in Costume Design & Technology. Her costume designs for ZACH Theatre include *Fully Committed, The Santaland Diaries, Red Hot Patriot: The Kick-Ass Wit of Molly Ivins, Metamorphoses* and *Shooting Star*. ZACH's Performing Arts School costume designs include *Sideways Stories, If You Give a Mouse a Cookie, Farm to Market, Call It Courage* and *Brothers, Boyfriends and Other Criminals*. Other local designs include *Vampyress* (Vortex Theatre), *Parade: A Musical* (St. Edward's University), *The Famous Rio Grande, The Trojan Women* and *Cabaret* (University of Texas). Prior to ZACH, she built costumes for the Williamstown Theatre Festival, The Ohio Light Opera Company and STAGES: St. Louis. She also worked as Head of Wardrobe and Make-up for the national tour of Playhouse Disney's *The Doodlebops LIVE!* and the 2008 national tour of The Moscow Ballet's *The Great Russian Nutcracker*. She is currently an active member of the local 205 IATSE union.



VICTORIA S. COADY* (*Production Stage Manager*) – joined ZACH Theatre in July 2012. REGIONAL THEATRE: *The Rocky Horror Show* at American Repertory Theatre's OBERON, *Xanadu, The Drowsy Chaperone, Striking 12, Body Awareness, Adding Machine: A Musical*; [title of show] at SpeakEasy Stage Company; Producer for toUch Performance Art's *AcousticaElectronica* in Boston and New York. OFF-BROADWAY: *The Merchant Of Venice* in New York and the Royal Shakespeare Company, UK with Theatre for a New Audience, *The Jew Of Malta, Sore Throats* and *All's Well That Ends Well* with Theatre for a New Audience NYC. EVENT MANAGEMENT: Harvard Arts Medal 2012 presented to Tommy Lee Jones, Lady Gaga's Born This Way Foundation launch event at Harvard University.



CATHERINE ANNE TUCKER* (*Stage Manager*) – AT ZACH THEATRE: Stage Management for *Mad Beat Hip & Gone, White Christmas, Ragtime, Dividing the Estate, Next to Normal, Red Hot Patriot: The Kick-Ass Wit of Molly Ivins; Metamorphoses; Beehive; Rockin' Christmas Party; Caroline, or Change; Porgy and Bess; Seussical the Musical; High School Musical* and various special events. REGIONAL THEATRE: *Much Ado About Nothing* at Austin Shakespeare Festival and *Cyrano de Bergerac* at Oregon Shakespeare Festival. OFF-BROADWAY: *Lapsburgh Layover* and *Be a Good Little Widow* with Ars Nova, *I Never Sang For My Father* with Keen Co. and *Sparkling Object* with CPP. OTHER CREDITS: Special Events Manager for NAAP, Dusty Film Festival, and Ars Nova Benefit; workshop of new Peter Gabriel musical *US* with The Real Theatre Co. NYC; Theatre Arts B.F.A. with an emphasis in Stage Management from Southern Oregon University.



JESSIE DOUGLAS* (*Assistant Stage Manager*) – AT ZACH THEATRE: Assistant Stage Manager for *White Christmas, Dividing the Estate, Rehearsal Assistant Stage Manger* for *Hairspray*, Assistant Stage Manager for *August: Osage County*, Assistant Stage Manager and in the ensemble for *Rent*, Assistant Stage Manager for *Our Town* and running crew for *The Grapes of Wrath*. OTHER CREDITS: Company/Touring Stage Manager for *The Intergalactic Nemesis Book One: Target Earth* and *Book Two: Robot Planet Rising*, a Robot Planet Production; Stage Manager for *Barefoot in the Park* at Unity Theater in Brenham, Texas; and *Proof*, produced by Thunder Mountain Theater Project in Juneau, Alaska. OTHER: Jessie spent a year in Juneau, Alaska, working for Perseverance Theatre as the Company/Stage Management Fellow. She is a graduate from Texas State University, San Marcos, where she earned her B.A. in Theater with a Business minor.

*Member of Actors' Equity Association, the union of professional actors and stage managers in the United States.

About the Artistic Staff

JANIS JOPLIN – Janis' brother and sister, Laura and Michael Joplin, took over the Janis Joplin Estate in 1975. "Neither my brother nor I were involved in the entertainment industry. We were isolated from connections," says Laura. Handling the licensing and other assets of their late sister's work and career, however, has been a very productive partnership. Teaming up with JAM, Inc., in 2007 to carry their sister's legacy forward, the Estate has a theatrical documentary now in production, a Star on the Hollywood Walk of Fame, a full retail apparel line, new releases, two books on the way and much more coming.

ONE NIGHT PRODUCTIONS, LCC (Producer) – is a New York-based entertainment production and management company owned by Todd Gershwin and Daniel Chlewich. One Night Productions produces the national tour of *One Night with Janis Joplin*. Additional properties owned and managed by Gershwin and Chlewich include a number of unique musical productions revolving around the iconic music and legacies of George and Ira Gershwin, including *Here to Stay – The Gershwin Experience*, and the successful Gershwin musical, *S'Wonderful*. Other productions include the national tour of the Tony Award-winning show *Blast*, the recent Broadway production of *Godspell*, the new Harold Arlen celebration *Over the Rainbow*, and the new gospel musical being developed with multiple GRAMMY® Award-winning recording artist BeBe Winans.

JAMPOL ARTIST MANAGEMENT, INC. (Manager – Estate of Janis Joplin) – GRAMMY® Award-winning and Emmy® nominated Jeffrey Jampol is the President of JAM, Inc.; manages The Doors and the Estates of Jim Morrison, Janis Joplin, Tupac Shakur, Otis Redding, Peter Tosh, Henry Mancini and Rick James; and is a consultant to the Estate of Michael Jackson. Jampol, along with Dick Wolf, won the 2011 GRAMMY® for producing The Doors film, *When You're Strange*, narrated by Johnny Depp, and helped create, produce and present the Janis Joplin musical *One Night with Janis Joplin*. A voting member of The Recording Academy® since 1985, Jampol sat on the L.A. Chapter Board of Governors from 2007 to 2009. He is in his 16th year at U.C.L.A., teaching advanced music business courses sponsored by U.C.L.A. and The Recording Academy®.

ARENA STAGE (Co-Producer) – at the Mead Center for American Theater is a national center dedicated to the production, presentation, development and study of American theater. Under the leadership of Artistic Director Molly Smith and Executive Director Edgar Dobie, Arena Stage is the largest company in the country dedicated to American plays and playwrights. Arena Stage produces huge plays of all that is passionate, exuberant, profound, deep and dangerous in the American spirit, and presents diverse and ground-breaking work from some of the best artists around the country. Arena Stage is committed to commissioning and developing new plays through the American Voices New Play Institute. Now in its seventh decade, Arena Stage serves a diverse annual audience of more than 300,000. www.ArenaStage.org.

CLEVELAND PLAY HOUSE (Co-Producer) – was founded in 1915 and is America's first professional regional theatre. Throughout its rich history, Cleveland Play House has remained dedicated to its mission to inspire, stimulate and entertain diverse audiences in Northeast Ohio by producing plays and theatre education programs of the highest professional standards. It has produced more than 100 world and/or American premieres, and during its long history more than 12 million people have attended more than 1,300 Cleveland Play House productions. Today, Cleveland Play House looks toward its centennial while performing in three state-of-the-art venues at PlayhouseSquare in downtown Cleveland.

SAN JOSE REPERTORY THEATRE (Co-Producer) – founded in 1980, is an award-winning regional theatre with a mission to engage, entertain and inspire. They produce innovative theatrical performances that offer fresh perspectives into the human condition, educational programs that promote life-long learning and outreach initiatives that benefit Silicon Valley's diverse community. San Jose Rep presents seven main-stage productions and offers extensive education/outreach programming that serves over 100,000 community members annually. Over the last five years, San Jose Rep has received prestigious national awards for new works and outstanding artistic merit from organizations such as The Shubert Foundation, The Rockefeller Foundation, The James Irvine Foundation, Dean Goodman Awards, Bay Area Theatre Critics Circle Awards, DramaLogue Critics Awards and AT&T OnStage. *One Night with Janis Joplin* will play at San Jose Rep Sept. 5 – 29, 2013.

Production Technicians and Crew

COSTUMES

Costume Shop Manager.....	Blair Hurry
Costume Shop Assistant.....	Brandy Lee Harris
Wig Stylist.....	Allison Lowery
Wig Assistant.....	Amanda Bennett
Drapers.....	Joseph Adams, Alissa Duquette, Brandy Harris & Karen Mendenall
Fabric Dyer.....	Theresa Mancuso
Stitchers.....	Emily Eoff, Brandy Lee Harris, Meredith Lyon & Christina Montgomery
Wardrobe Supervisor.....	Alissa Duquette
Wardrobe Apprentice and Dresser.....	Amanda Bennett
Wardrobe Intern.....	Matt Raley

SCENIC

Technical Director.....	Justin J. Smith
Assistant Technical Director.....	Robert Richoux
Stage Operations Manager.....	Stacey Garrett
Shop Foreman.....	Luke Wenz
Master Carpenter.....	DJ Riley
Master Welder.....	Justin Cole
Set Carpenters.....	Gary Beisaw, Aryan Douglas, Thomas Lucenti & Ben Schave
Scenic Charge.....	J. Aaron Bell
Scenic Artists.....	Leslie Turner, Erin Wendel & Mary Wendel
Set Operations.....	Lauren Baxter, Chris Dominguez, Bartholomew Freed, Oliver Freeman, Taylor Novak, Garrett Parker, Leon Presley & Katherine Torgerson
Scenic Intern.....	Alison Dore

PROPERTIES

Props Master.....	Scott Groh
Artisans.....	Justin Cox, Stephen Frisco & Rikki Perez

ELECTRICS & SOUND

Lighting Supervisor.....	Matthew Webb
Video Engineer.....	Eric Gazillo
Electrics Crew.....	Kris Carpenter, Erin Fleming, Sadie Langenkamp, Ryan Logue, Taylor Novak & Danielle Wright

CREW

Production Assistant.....	Sadie Alisa
Crew Chief.....	Leon Presley
Fly Operator.....	Taylor Novak
Props Crew.....	Rikki Perez
Sound Engineer.....	Allison Ebling
Light Board Operator.....	Ryan Logue
Video Operator.....	Carolyn Markgraf
Spotlight Operators.....	Garrett Crooks & Erin Fleming
Head Dresser and Audio Assistant.....	Christina Montgomery
Wardrobe Swing.....	Brandy Lee Harris
Playbill Production.....	Rob Faubion & Jim Reynolds

